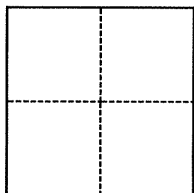


CORNER RECORD

Agency Index BK 103 PG 78
Document Number CR 10715

City of BERKELEY County of ALAMEDA, California
Brief Legal Description Found 3/8" Brass Pin in Monument Well (B1391) on Milvia St near Hopkins St

CORNER TYPE



☐ Government Corner ☒ Control
☐ Meander ☐ Property
☐ Rancho ☐ Other

Date of Survey October 10, 2017

COORDINATES (Optional)

N. _____ E. _____
Elevation _____
Units ☐ Metric ☐ U.S. Survey Foot
Horizontal Datum _____
Zone _____ Epoch Date _____
Vertical Datum _____
☐ Complies with Public Resources Code §§8801-8819
☐ Complies with Public Resources Code §§8890-8902

PLS Act Ref.: ☐ 8765(d) ☒ 8771 ☐ 8773 ☐ Other:
Corner/
Monument: ☒ Left as found ☐ Established ☐ Rebuilt ☒ Pre-Construction
☐ Found and tagged ☐ Reestablished ☐ Referenced ☐ Post-Construction

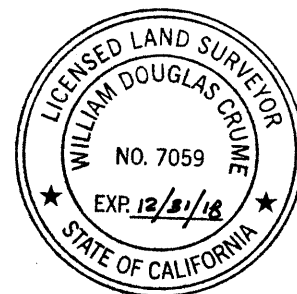
Narrative of corner identified and monument as found, set, reset, replaced, or removed:
☐ See sheet #2 for description(s):

MONUMENT REFERENCED, AS FOUND, PRE-CONSTRUCTION

SURVEYOR'S STATEMENT

This Corner Record was prepared by me or under my direction in conformance with
the Professional Land Surveyors' Act on October 10, 2017

Signed William Douglas Crume P.L.S. or R.C.E. No. 7059



COUNTY SURVEYOR'S STATEMENT

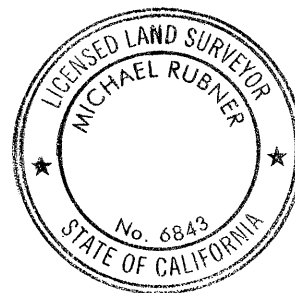
This Corner Record was received 18 OCTOBER 2017

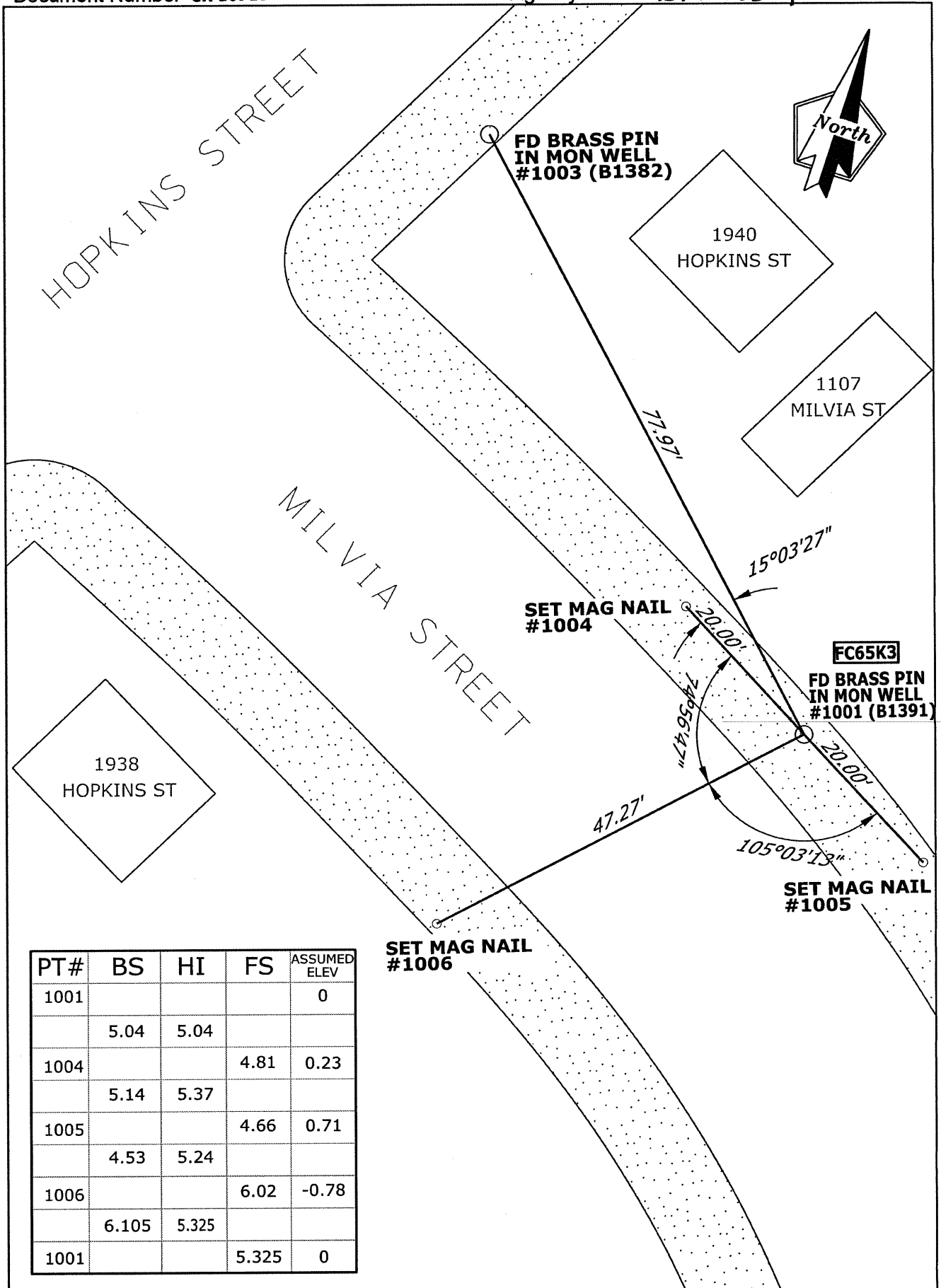
and examined and filed 8 DECEMBER 2017

Signed Michael Rubner P.L.S. or R.C.E. No. 6843

Title COUNTY SURVEYOR

County Surveyor's Comment





PT#	BS	HI	FS	ASSUMED ELEV
1001				0
	5.04	5.04		
1004			4.81	0.23
	5.14	5.37		
1005			4.66	0.71
	4.53	5.24		
1006			6.02	-0.78
	6.105	5.325		
1001			5.325	0