

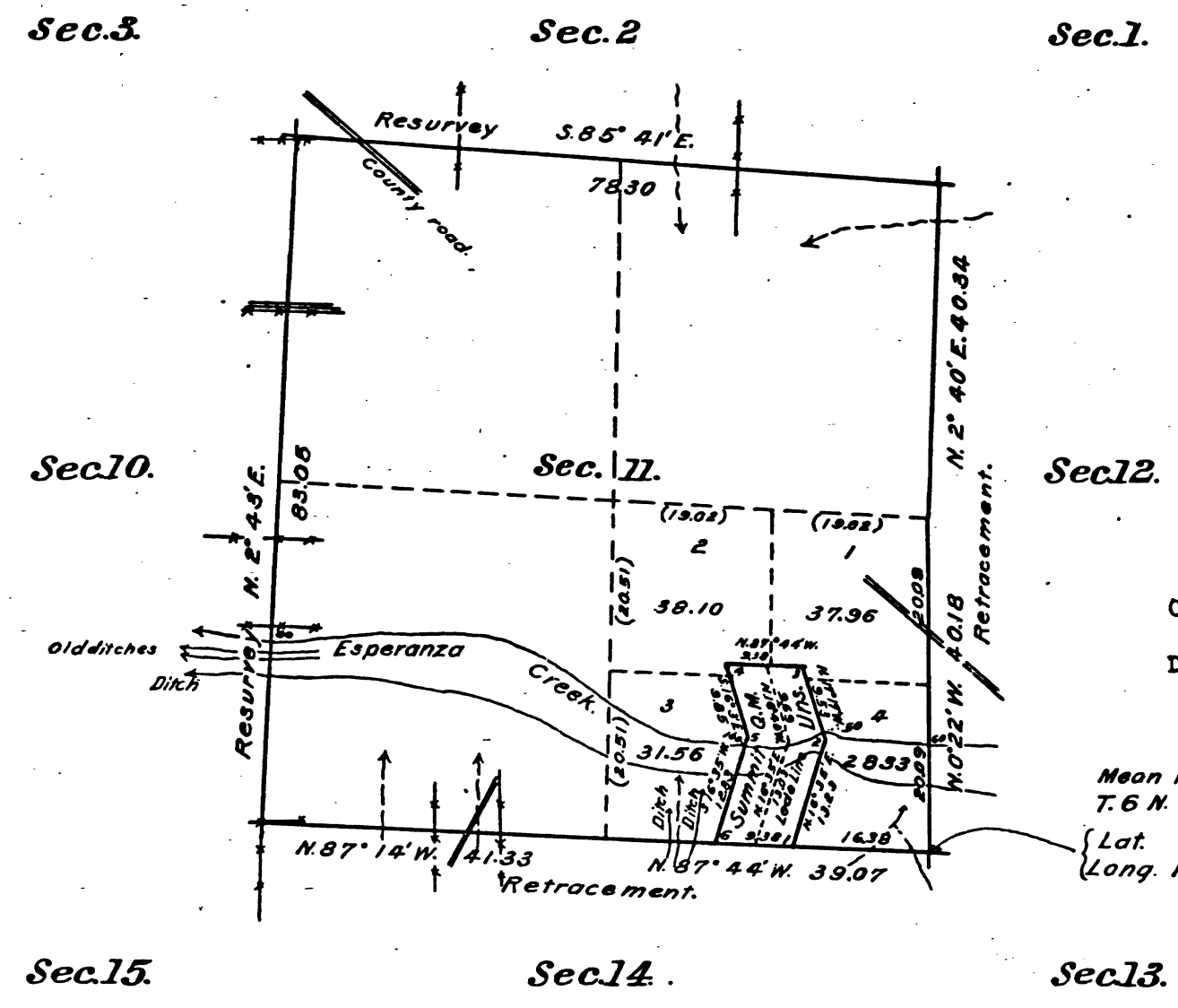
ORIGINAL

3

PLAT

showing the retracement and resurvey of the boundaries of Section 11,
T. 5 N. R. 13 E. Mount Diablo Meridian, California, and the segregation of the
Summit Quartz Mine, unsurveyed, from the SE 1/4 of said section.

Scale: 1 inch = 20 chains



This segregation survey was authorized by letter Sacramento
03389 "E" of the Commissioner of the General Land Office, dated
December 2, 1918.

Mean magnetic declination, 18° 11' E near center of Sec. 18.
T. 6 N. R. 14 E.
{ Lat. 38° 17' N
Long. 120° 30' 30" W

Lines designated.	Mls.	Chs.	Lks.
Section lines, retraced and resurveyed	4	2	26
Summit Quartz Mine		64	20

This plat showing the retracement and resurvey of the boundaries of Section 11, T. 5 N. R. 13 E., Mount
Diablo Meridian, California, plat approved February 26, 1874, and the segregation of the Summit Quartz Mine,
unsurveyed, from the SE 1/4 of said section, executed by Guy Redwine, U.S. Cadastral Engineer, June 29 to July
15, 1919, and John R. English, U.S. Surveyor, May 25 to 27, 1921, under special instructions for Group 72,
dated February 24, 1919 and January 28, 1921, to accommodate H.E. Sacramento 03389 of John B. Tate is strictly
conformable to the field notes of the survey thereof on file in this office which have been examined and approved.

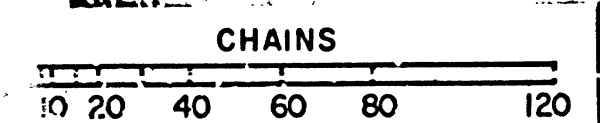
U.S. Surveyor General's Office
San Francisco, California.
June 16, 1921.

John R. English
U.S. Surveyor General for California.

41 439

REGISTER AND RECEIVER RECEIPT
DATED DE 13 1921

CHAINS



T 5 N R 13 E MD

BLM 343