

FINISH SCHEDULE				
ROOM NAME	FLOOR	BASE	WALL	CEILING
(100) DINING ROOM	T200 24" X 24" TILE	T109 6" X 36" TILE	P101, P104 T109 TILE W102 WALL COVERING	C1 2' X 2' ARMSTRONG, SEPIA #N91311 C3 GYP BOARD W/ PAINT P103
(101) SERVING AREA	S1 PLAIN S2 ABRASIVE IN HIGH TRAFFIC AREAS	S1 6" H CONT. (KITCHEN EQUIPMENT ON 6" NSF APPROVED LEGS)	T109 TILE	C3 GYP BOARD W/ SMOOTH WASHABLE PAINT
(103) KITCHEN	S1 PLAIN S2 ABRASIVE IN HIGH TRAFFIC AREAS	S1 6" H CONT. (KITCHEN EQUIPMENT ON 6" NSF APPROVED LEGS)	WP3 S.S. BEHIND COOK LINE WP1 FRP PANEL	C2 2' X 4' SUSPENDED GRID WASHABLE VINYL COATED GYP BOARD PANELS
(104) KITCHEN PREP.	S1 PLAIN S2 ABRASIVE IN HIGH TRAFFIC AREAS	S1 6" H CONT. (KITCHEN EQUIPMENT ON 6" NSF APPROVED LEGS)	WP1 FRP PANEL	C2 2' X 4' SUSPENDED GRID WASHABLE VINYL COATED GYP BOARD PANELS
(105) WALK-IN COOLER	S1 PLAIN S2 ABRASIVE IN HIGH TRAFFIC AREAS	S.S. / ALUMINUM WITH 3/4" RADIUS	EXT S.S. INT ALUMINUM GALVANIZED S.S.	ALUMINUM GALVANIZED STAINLESS STEEL
(105A) WALK-IN FREEZER	S1 SILKAL UNDER WIF SUBFLOOR	S.S. / ALUMINUM WITH 3/4" RADIUS	EXT S.S. INT ALUMINUM GALVANIZED S.S.	ALUMINUM GALVANIZED STAINLESS STEEL
(106) MEN'S ROOM	T200 24" X 24" TILE	SCHLUTER	T108 TILE	C3 GYB BOARD W/ P101 SMOOTH WASHABLE PAINT
(107) WOMEN'S ROOM	T200 24" X 24" TILE	SCHLUTER	T108 TILE	C3 GYB BOARD W/ P101 SMOOTH WASHABLE PAINT
(108) VESTIBULE	T200 24" X 24" TILE	T109 6" X 36" TILE	P104 PAINT GYB BOARD TILE T109	C3 GYB BOARD W/ P101 SMOOTH WASHABLE PAINT
(109) STORAGE ROOM	T200 24" X 24" TILE	T109 6" X 36" TILE	WP1 FRP PANEL	C3 GYB BOARD W/ P101 SMOOTH WASHABLE PAINT
(111) ENTRY VESTIBULE	T200 24" X 24" TILE M100 4' X 6' MAT	T109 6" X 36" TILE	P104 PAINT TILE T109	C3 GYB BOARD W/ P101 SMOOTH WASHABLE PAINT

DOOR & HARDWARE SCHEDULE				
INSTALLED AND FURNISHED BY: G.C. UNLESS NOTED OTHERWISE				

CONTRACTOR TO PURCHASE DOOR HARDWARE & FRAME DIRECTLY FROM PANDA'S NATIONAL ACCOUNT SUPPLIER. SUPPLIER TO PROVIDE ALL STOREFRONT DOOR HARDWARE, P-LAM DOORS & FRAMES AND HM DOORS & FRAMES				
HARDWARE				
HINGE				
STOP				
ACCESSORIES				
REMARKS				
CONTACT FOR QUOTING, ORDERING & LOGISTICS JERRY JACOBS, PROJECT MANAGER 800-887-4307 EXT. 220 PHONE jerryj@locknet.com, pandad@locknet.com				
CONTACT FOR GENERAL ACCOUNT NEEDS ANGIE HAINES, ACCOUNT MANAGER 800-887-4307 EXT. 145 PHONE / 859-509-4033 MOBILE Angieh@locknet.com, pandad@locknet.com				
ADDITIONAL CONTACTS: THOMAS DOWNS, SALES MANAGER, ThomasD@locknet.com; 800-887-4307 x116 ROB OWEN, DIR. BUSINESS DEVELOPMENT; RobO@locknet.com; 606-748-2065				
NOTE: CONTRACTOR HAS THE OPTION TO PURCHASE STOREFRONT HARDWARE FROM OTHER SOURCE. PROVIDED THE HARDWARE IS PER SPEC. NO SUBSTITUTIONS ALLOWED. STOREFRONT HARDWARE SPECIES ARE PROVIDED IN THE PROJECT BID PACKAGE. COORDINATE WITH PANDA PROJECT MANAGER LISTED ON SHEET G-201				
PASSAGE LOCKSET PRIVACY S.F. PULL S.F. PUSH PANK BUTT CONT. PHAND FLOOR WALL THRESHOLD DET. ALARM SLENCERS KICKPLATE CLOSER				

NO.	DOOR MATERIAL	SIZE	FRAME	FACEDGE	THK.	CORE	LITE	RATE	PASSAGE	LOCKSET	PRIVACY	S.F. PULL	S.F. PUSH	PAK	BUTT	CONT. PHAND	FLOOR	WALL	THRESHOLD	DET. ALARM	SLENCERS	KICKPLATE	CLOSER	REMARKS
(EX)	EXISTING																							
(B)	ALUM. STORE VESTIBULE	3'-0" X 7'-0"	ALUM.	DARK BRONZE ANODIZED ALUM.	1 1/2"	HOLLOW	GLASS	-																KICKPLATE ON EACH SIDE OF DOOR
(D3)	S.C. WOOD	3'-0" X 7'-0"	H. MTL.	PLASTIC LAMINATE PRE-FINISHED	1 1/2"	SOLID	-	-																KICKPLATE ON VESTIBULE SIDE OF DOORS.
(D4)	S.C. WOOD	(2) 2'-0" X 7'-0"	H. MTL.	PLASTIC LAMINATE PRE-FINISHED	1 1/2"	SOLID	-	-																KICKPLATE ON VESTIBULE SIDE OF DOORS.

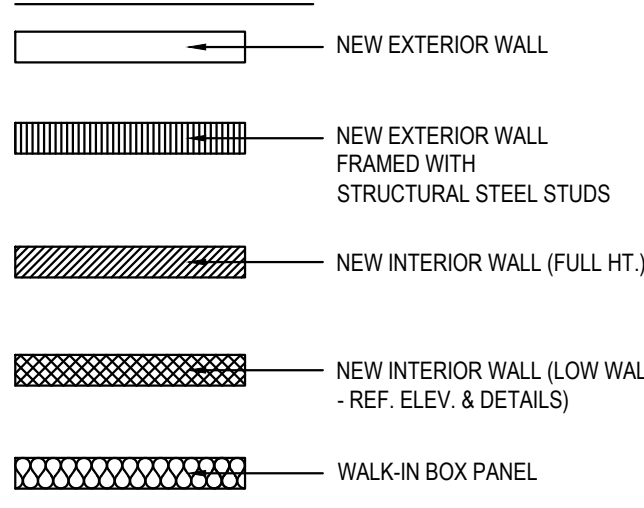
WALL SCHEDULE				
INSTALLED AND FURNISHED BY: G.C. UNLESS NOTED OTHERWISE				
NO.	DESCRIPTION			
(EX)	EXISTING SHELL BUILDING WALL			
(W1)	3-5/8" 20GA. METAL STUD WALL W/ 1/2" TYPE "X" GYP. BOARD BOTH SIDES (SEE ARCHITECTURAL DETAILS & ELEVATIONS)			
(W2)	3-5/8" 20GA. METAL STUD WALL W/ 1/2" TYPE "X" GYP. BOARD ON ONE SIDE (SEE ARCHITECTURAL DETAILS & ELEVATIONS)			
(W3)	NOT USED			
(W4)	3-5/8" 20GA. METAL STUD LOW WALL W/ 1/2" TYPE "X" GYP. BD BOTH SIDES. PROVIDE 3 1/2" KNEE-WALL BRACE/POST @ CORNERS AND @ 48" O.C.			
(W5)	6" 20GA. METAL STUD WALL W/ 1/2" TYPE "X" GYP. BOARD BOTH SIDES (SEE ARCHITECTURAL DETAILS & ELEVATIONS)			
(W6)	NOT USED			
(W7)	6" 20GA. METAL STUD LOW WALL W/ 1/2" TYPE "X" GYP. BOARD BOTH SIDES. PROVIDE 3 1/2" KNEE-WALL BRACE/POST @ CORNERS AND @ 48" O.C.			
(W8)	2 1/2" 20GA. METAL STUD FURRING W/ 1/2" TYPE "X" GYP. BOARD ON ONE SIDE. REFER DETAILS FOR FURRING DISTANCE			

WALL PANEL SCHEDULE				
INSTALLED AND FURNISHED BY: G.C. UNLESS NOTED OTHERWISE				
NO.	MANUFACTURER	DESCRIPTION	MFG #	COLOR FINISH
(WP1)	CRANE COMPOSITES INC.	F.R.P. THICKNESS: .075	LBOS 14	#636 (GRAY), SM/SM
(WP2)	-	S.S. PANEL (22 GA)	-	BRUSHED FINISH
(WP3)	-	S.S. PANEL (22 GA)	-	DIAMOND PATTERN FINISH
(W102)	WOLF GORDON	RED BAMBOO	-	-
(W103)	WOLF GORDON	CLOUD WALLCOVERING	-	-
REMARK: CONTACT: LAUREN ARMSTRONG 815.467.8684 FURNISHED BY PX, INSTALLED BY G.C. CONTACT: CATHY DY 310.770.1165 cathy.dy@wolfgordon.com CONTACT: CATHY DY 310.770.1165 cathy.dy@wolfgordon.com				

SPECIAL SURFACE SCHEDULE				
INSTALLED AND FURNISHED BY: G.C. UNLESS NOTED OTHERWISE				
NO.	MANUFACTURER	PRODUCT	MFG #	REMARK
(QZ-7)	CORIAN	ARTIFICIAL QUARTZ	-	SERVICE COUNTER & DRINK STATION PROVIDED BY PX, INSTALLED BY G.C.

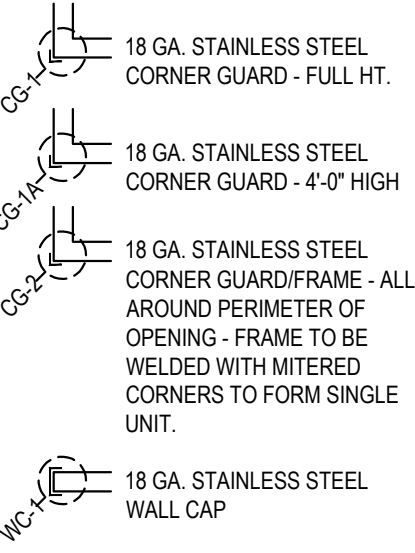
INTERIOR PAINT SCHEDULE				
INSTALLED AND FURNISHED BY: G.C. UNLESS NOTED OTHERWISE				
NO.	MANUFACTURER	MFG #	FINISH	REMARK
(P245)	SHERWIN-WILLIAMS	SW 7065	ARGOS	PROMAR 200, ZERO VOC, LATEX SEMI-GLOSS REAR SERVICE DOOR
(P101)	SHERWIN-WILLIAMS	SW 6252	ICE CUBE	PROMAR 200, ZERO VOC, LATEX EGG-SHELL RESTROOM & RESTROOM VESTIBULE CEILING, SERVICE LINE SOFFIT
(P103)	SHERWIN-WILLIAMS	SW 7032	WARM STONE	PROMAR 200, ZERO VOC, LATEX EGG-SHELL DROPPED SOFFITS
(P104)	SHERWIN-WILLIAMS	SW 2850	CHELSEA GRAY	PROMAR 200, ZERO VOC, LATEX EGG-SHELL DINING RM. WALLS, RESTROOM VESTIBULE WALLS
(P106)	SHERWIN-WILLIAMS	SW 7020	BLACK FOX	DTM ACRYLIC GLOSS, LOW VOC RESTROOM DOOR FRAMES & LCD NICHE (BACK WALL)
(P265)	SHERWIN-WILLIAMS	SW 7675	SEALSKIN	PROMAR 200, ZERO VOC, LATEX EGG-SHELL FRONT & BACK & UNDERSIDE FACES OF SERVICE COUNTER SOFFIT

WALL LEGEND



NOTE: THE FOLLOWING STAINLESS STEEL PROVIDED BY PX-INSTALLED BY G.C.:
1. PANEL DIVIDERS AT WP3
2. INSIDE CORNER AT WP3 TO WP2
3. FLASHING AT TOP OF BASE WP3
4. WP2 PIECE AT LENGTH OF WALL

NOTE: THE FOLLOWING STAINLESS STEEL PROVIDED BY G.C.-INSTALLED BY G.C.:
5. INSTALL 18 GA STAINLESS STEEL CORNER GUARD & WALL CAP INSIDE KITCHEN

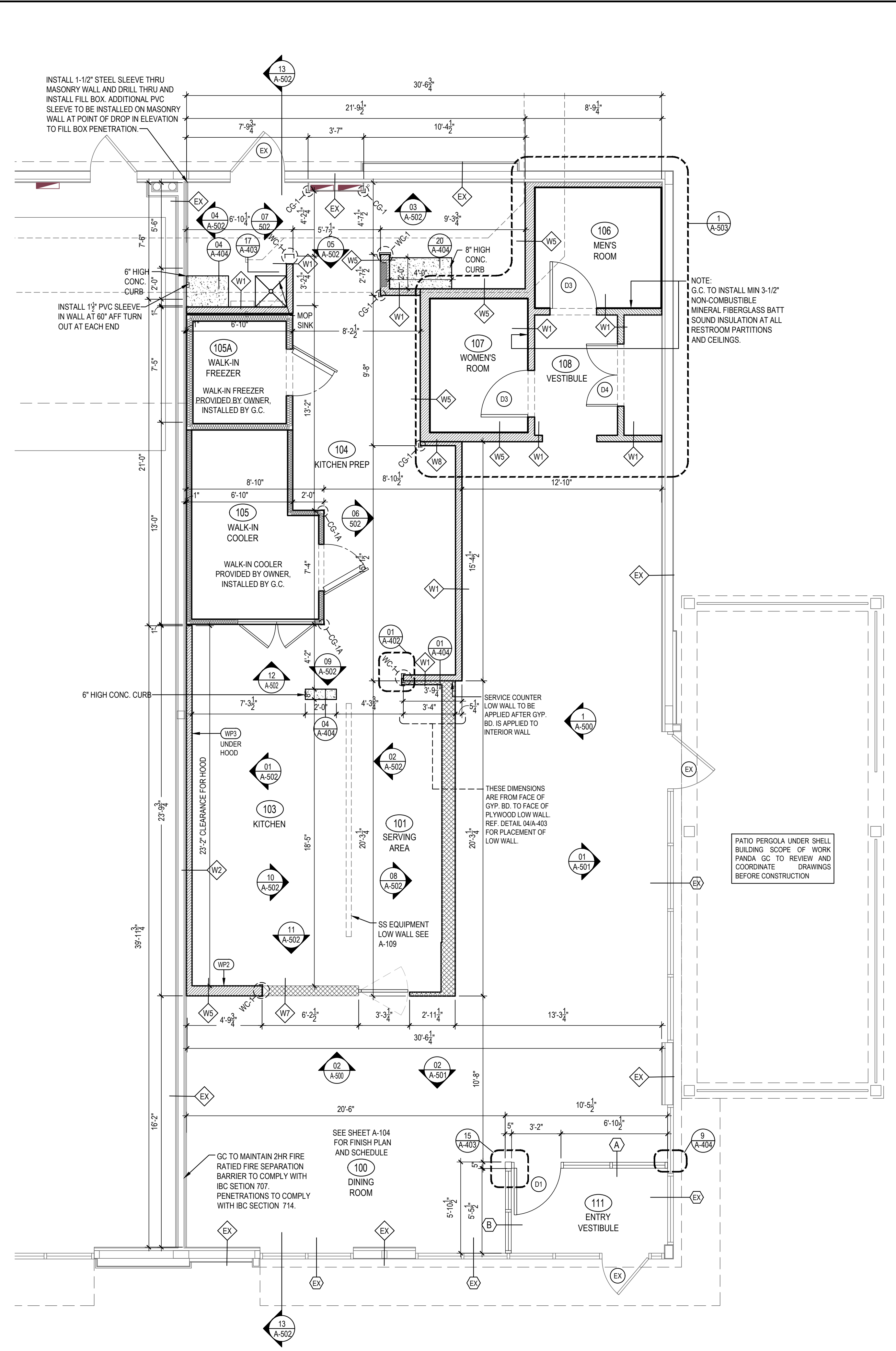


ALL OTHER STAINLESS STEEL BY G.C.

NOTE!!!!!!!!!!!!!!:

***ALL INTERIOR DIMENSIONS ARE TO FACE OF GYPSUM BOARD**

TILE SCHEDULE (SEE SHEET A-104)



FLOOR PLAN 1
Scale= 1/4" = 1'-0"
A-103



PANDA EXPRESS, INC.
1683 Walnut Grove Ave.
Rosemead, California 91770
Telephone: 626.799.9898
Facsimile: 626.372.8288

All ideas, designs, arrangement and plans indicated or represented by this drawing are the property of Panda Express Inc. and were created for use on this specific project. None of these ideas, designs, arrangements or plans may be used by or disclosed to any person, firm, or corporation without the written permission of Panda Express Inc.

REVISIONS:

NO.	DESCRIPTION	DATE

ISSUE DATE:

LANDLORD REVIEW	03-04-2022
FINAL LANDLORD REV.	06-20-2022
PERMIT	07-19-2022
BID SET	10-06-2022
CONSTRUCTION SET	01-16-2023

DRAWN BY: TD

PANDA PROJECT #: D7861
ARCH PROJECT #: JCDT21-0268

I certify that these documents were prepared or approved by me, and that I am a duly licensed architect/engineer under the laws of the State of Maryland, license number 20249, expiration date 2/10/2024.



PANDA EXPRESS
TRUE WARM & WELCOME
10300 Mill Run Circle
Owings Mills, MD 21117

A-103

FLOOR PLAN

TRUE WARM & WELCOME 2300 R6 RR

CONSTRUCTION SET

01-16-2023