

# CORNER RECORD

Agency Index

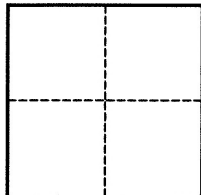
BOOK 110 PAGE 60

Document Number

CR 11444

City of BERKELEYCounty of ALAMEDA

, California

Brief Legal Description CITY OF BERKELEY MONUMENT DD73P7**CORNER TYPE****COORDINATES (OPTIONAL)**

- ☐ Government Corner ☒ Control  
☐ Meander ☐ Property  
☐ Rancho ☐ Other

Date of Survey APRIL 16TH, 2018

N. \_\_\_\_\_ E. \_\_\_\_\_

Elevation \_\_\_\_\_

Units ☐ Metric ☐ U.S. Survey Foot

Horizontal Datum \_\_\_\_\_

Zone \_\_\_\_\_ Epoch Date \_\_\_\_\_

Vertical Datum \_\_\_\_\_

☐ Complies with Public Resources Code §§8801-8819☐ Complies with Public Resources Code §§8890-8902

PLS Act Ref.:

☐ 8765(d)☒ 8771☐ 8773☐ Other:

Corner/

☒ Left as found☐ Established☐ Rebuilt☒ Pre-Construction

Monument:

☐ Found and tagged☐ Reestablished☐ Referenced☐ Post-Construction

Narrative of corner identified and monument as found, set, reset, replaced, or removed:

☒ See sheet #2 for description(s):

FOUND MONUMENT THAT COULD BE DAMAGED OR DESTROYED BY A PROPOSED GAS LINE CONSTRUCTION PROJECT. MONUMENT WAS REFERENCED AS SHOWN ON PAGE 2 OF 2.

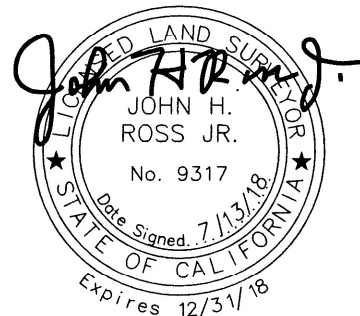
THE PURPOSE OF THIS CORNER RECORD IS TO PRESERVE THE LOCATION OF THE MONUMENT PRIOR TO CONSTRUCTION. NO ATTEMPT WAS MADE TO DETERMINE THE RELATIONSHIP BETWEEN THE MONUMENT AND PROPERTY LINES, RIGHT-OF-WAY LINES, CENTERLINES OR OTHER MONUMENTS.

**SURVEYOR'S STATEMENT**

This Corner Record was prepared by me or under my direction in conformance with

the Professional Land Surveyors' Act on APRIL 25TH, 2018

Signed

P.L.S. or R.C.E. No. 9317**COUNTY SURVEYOR'S STATEMENT**This Corner Record was received 25 MAY 2018and examined and filed 24 JULY 2018

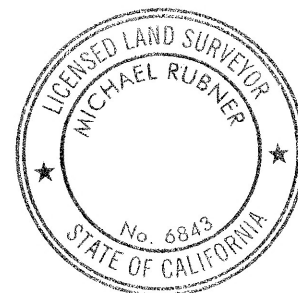
Signed

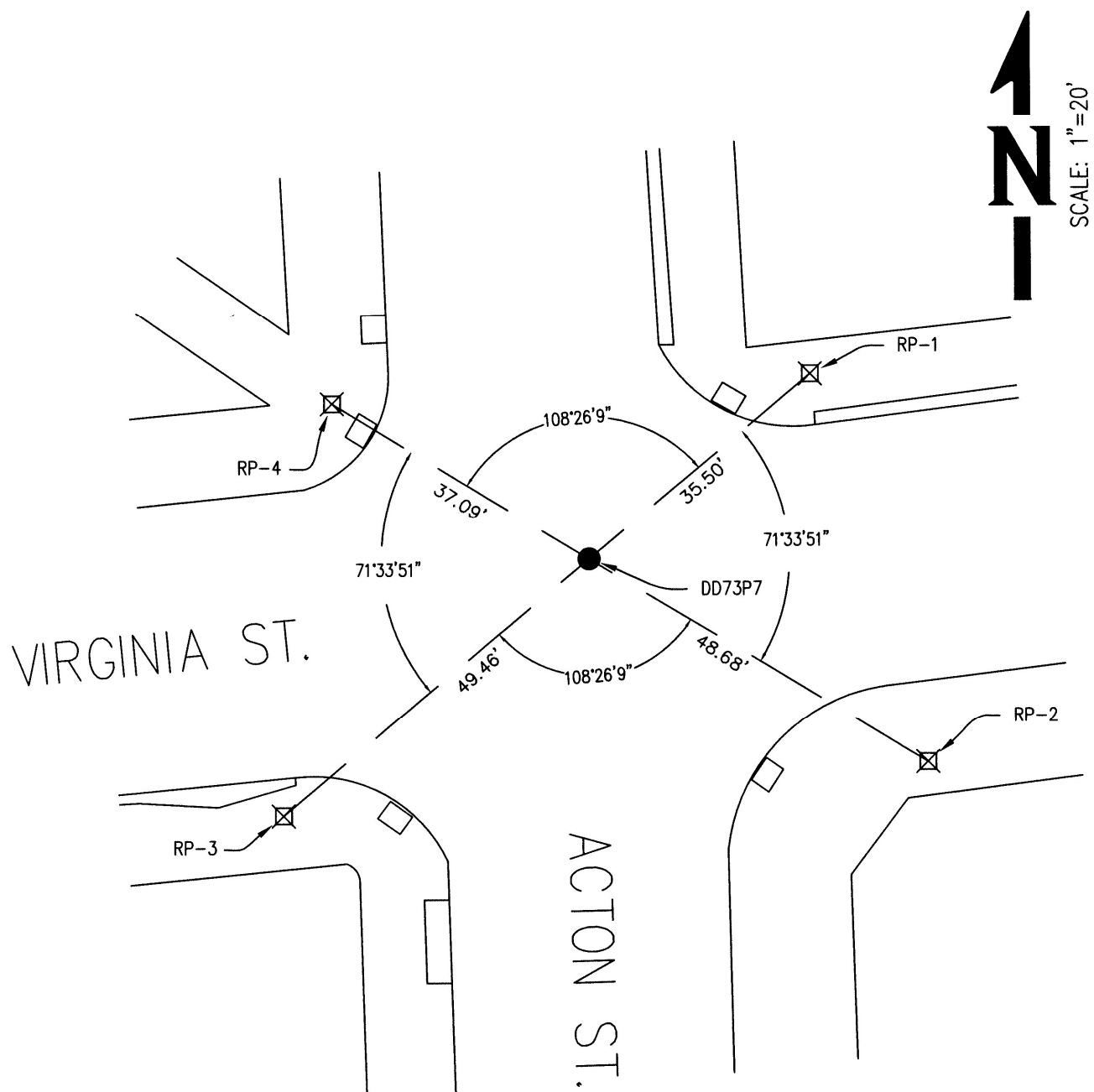
P.L.S. or R.C.E. No. 6843

Title

COUNTY SURVEYOR

County Surveyor's Comment



**LEGEND**

- FOUND 3/8" BRASS PIN IN MONUMENT WELL
- ⊠ SET SCRIBED "X" IN SIDEWALK FOR PERPETUATION THRU CONSTRUCTION.