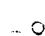

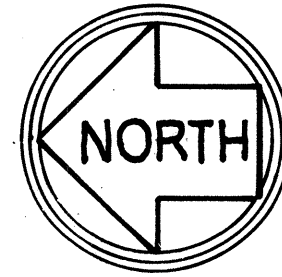


BASIS OF BEARINGS:
CENTER LINE OF BLACK AVENUE WAS TAKEN AS N89°51'W.
BUILDING SET-BACK LINES:
BUILDING SET-BACK LINES TO BE AS REQUIRED BY THE CITY
OF PLEASANTON ZONING ORDINANCE.

LEGEND: NO ACCESS *TTTTTTTT*
STANDARD CONCRETE CITY MONUMENTS TO BE
INSTALLED SHOWN THUS: 
EXISTING MONUMENTS SHOWN THUS: 
PUBLIC SERVICE EASEMENTS DESIGNATED "P.S.E."

NOTE:
CROSSES CUT ON LOT SIDELINES EXTENDED.
OFFSET 9.75' FROM R. FOR 60' STREET.
OFFSET 4.75' FROM R. FOR ALL OTHER STREETS.



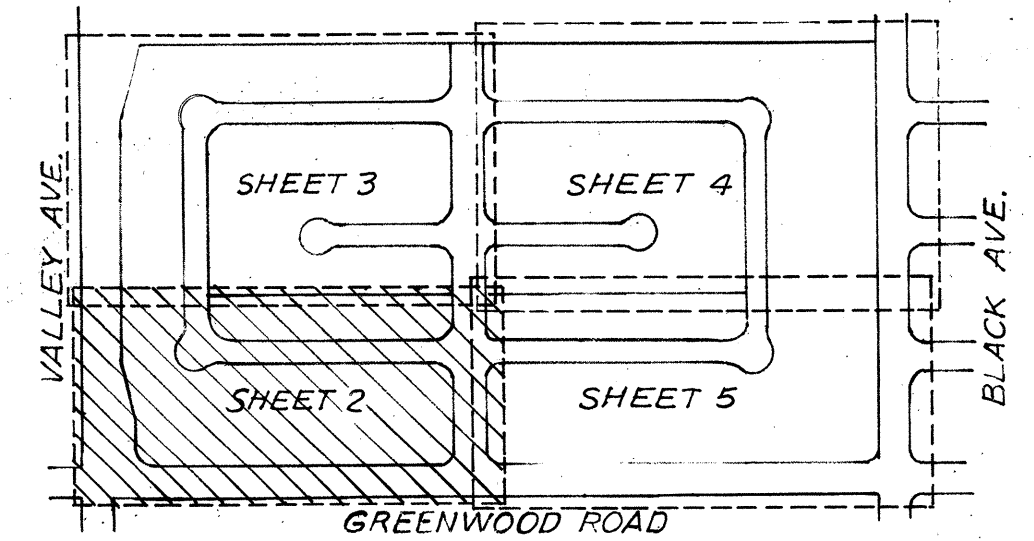
TRACT 2721

PLEASANTON VALLEY-UNIT 5

CITY OF PLEASANTON

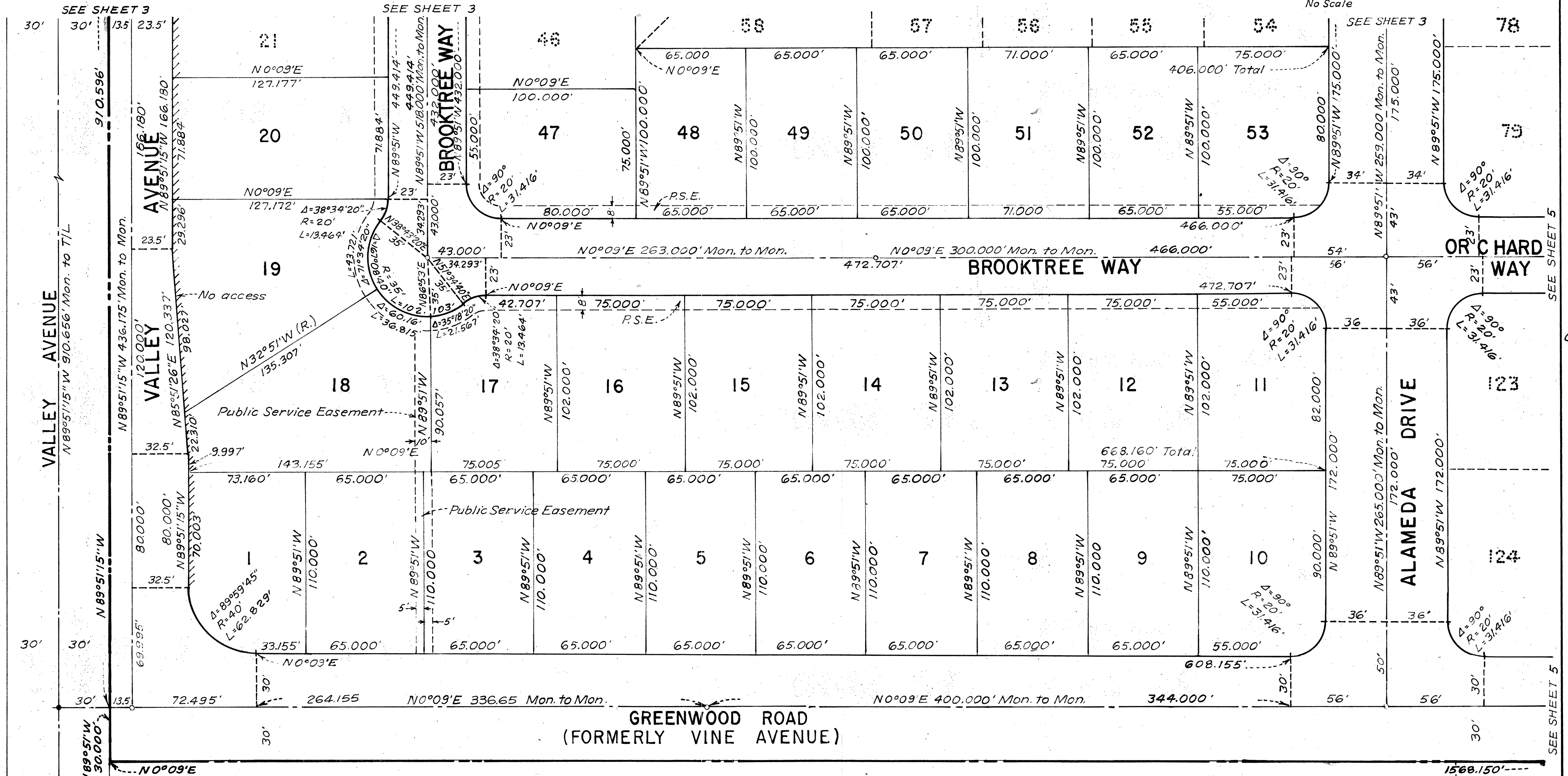
ALAMEDA COUNTY, CALIFORNIA

MARTIN & BISSELL
CIVIL ENGINEERS
JUNE 1965
SCALE: 1" = 40'



KEY MAP

No Scale



D. & V. BUILDERS, INC.

SHEET 2 OF 5 SHEETS

TR.
2721