

SCALE: 1" = 20'
ACREAGE: 0.800 ACRES
NO. LOTS: 29

KRYSTAL VILLA UNIT NO. 3

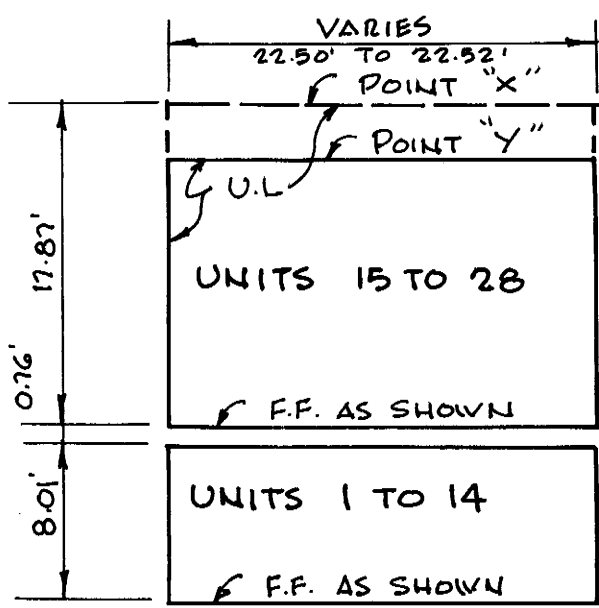
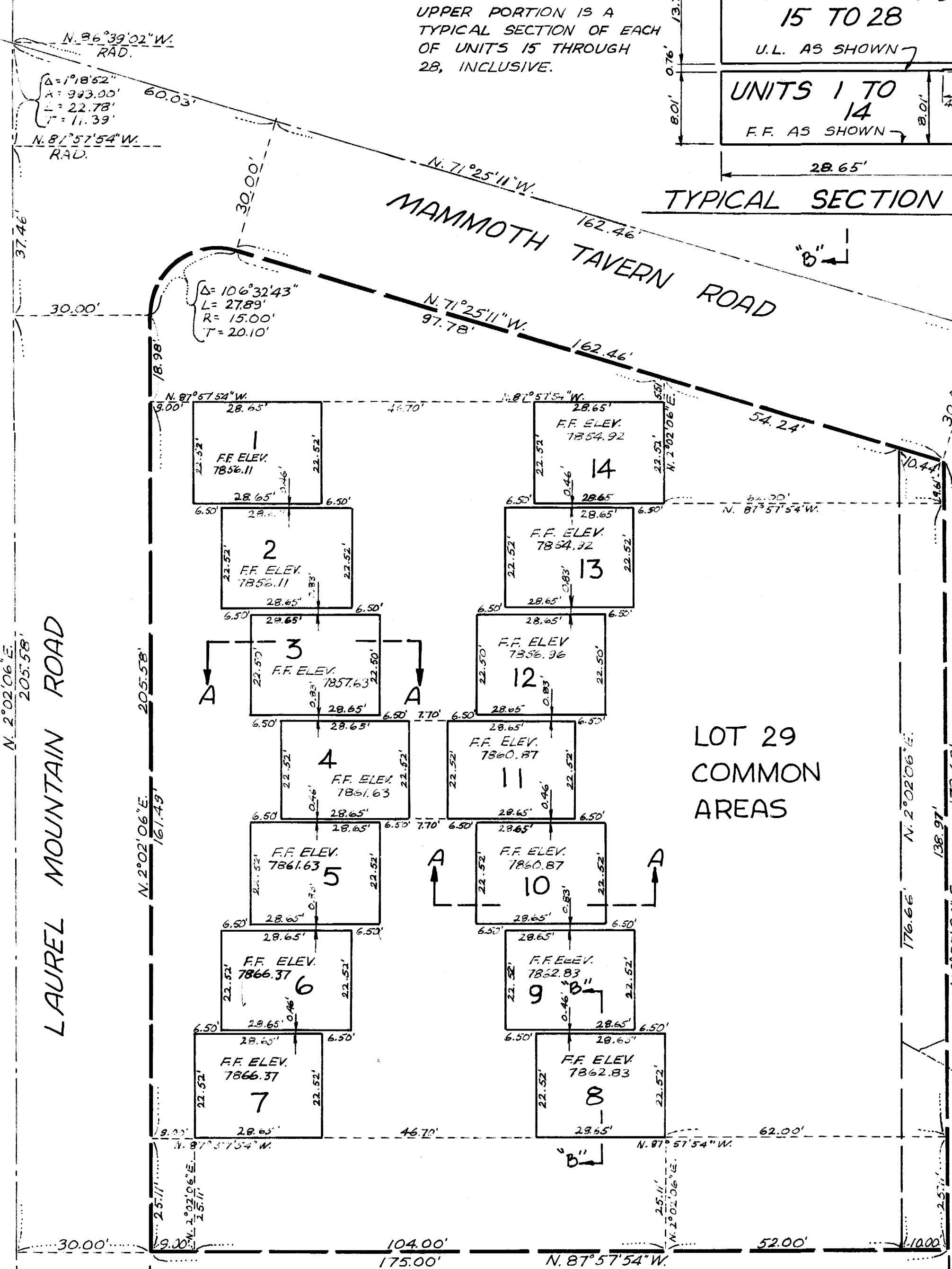
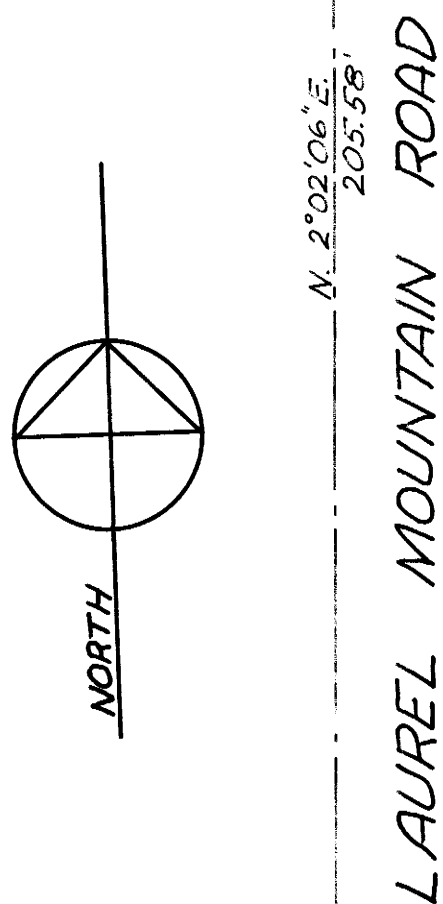
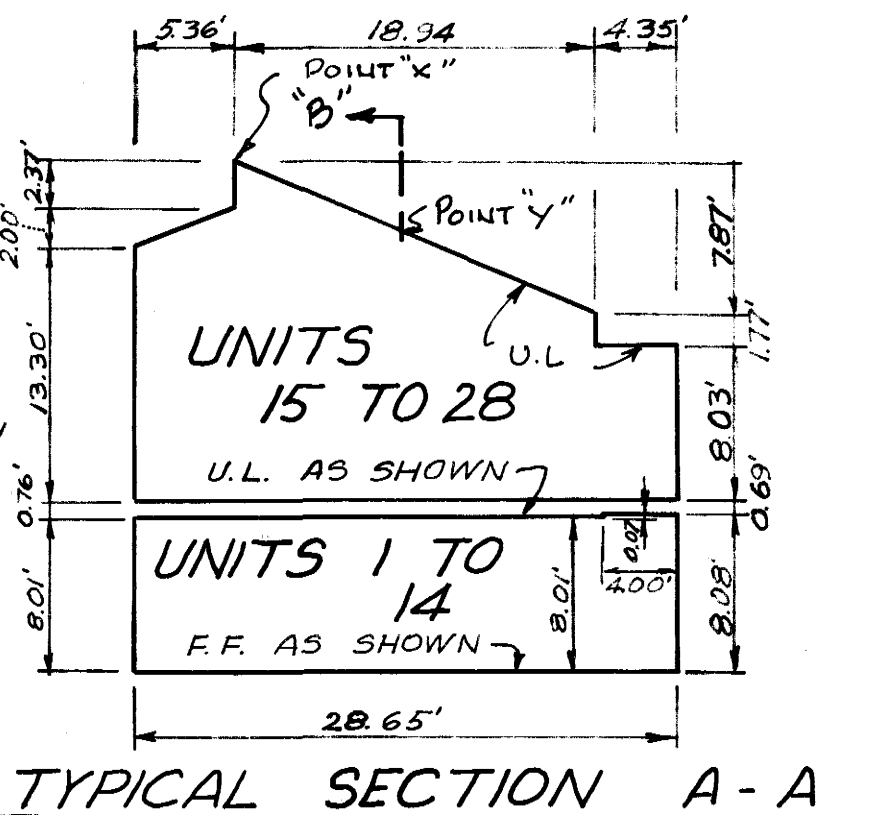
IN THE UNINCORPORATED TERRITORY OF MONO COUNTY, CALIFORNIA

E.T. CONRAD, R.C.E. 14794
JULY, 1969
FOR CONDOMINIUM PURPOSES

SHEET 3 OF 4 SHEETS

NOTE: REFER TO SHEETS 1 & 2
NOTES.

LOWER PORTION IS A
TYPICAL SECTION OF EACH
OF UNITS 1 THROUGH 14,
INCLUSIVE.
UPPER PORTION IS A
TYPICAL SECTION OF EACH
OF UNITS 15 THROUGH
28, INCLUSIVE.



1/26 6 68-B