

PARCEL MAP

CONSISTING OF 2 SHEETS

BEING A SUBDIVISION OF THAT 2.920 ACRE PARCEL OF LAND AS SHOWN ON THAT CERTAIN RECORD OF SURVEY WHICH WAS FILED FOR RECORD ON MARCH 27, 1981 IN BOOK 481 OF MAPS, AT PAGE 46, SANTA CLARA COUNTY RECORDS, AND LYING ENTIRELY WITHIN THE

CITY OF SAN JOSE, CALIFORNIA

DECEMBER, 2001

SCALE: 1"=40'

GK Giuliani & Kull, Inc.
Engineers • Planners • Surveyors
4880 Stevens Creek Blvd Suite 205 San Jose, CA 95129

REFERENCES:

- (1) RECORD OF SURVEY (481 M 46)
- (2) RECORD OF SURVEY (203 M 6)

BASIS OF BEARINGS

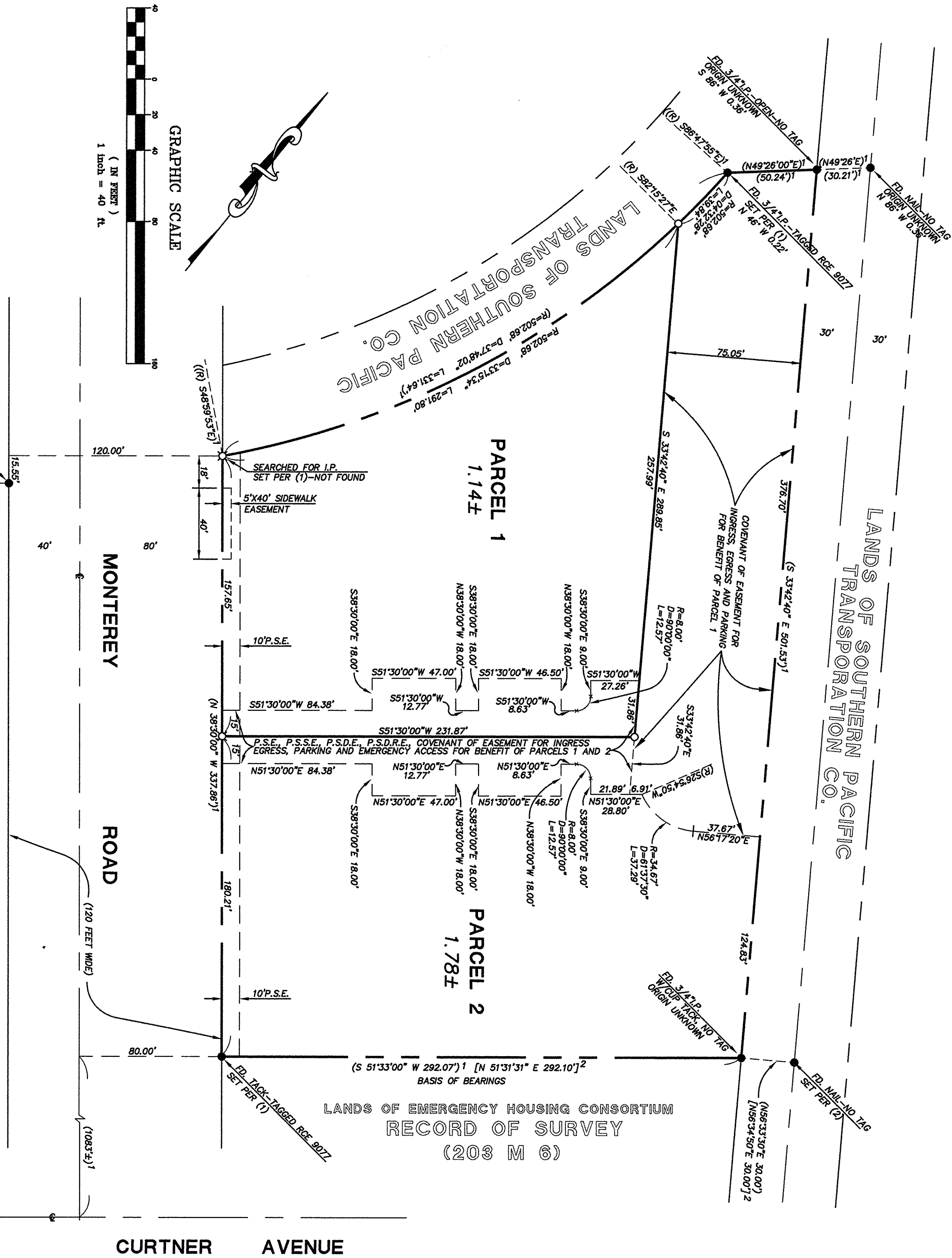
THE BEARING SOUTH 51°33'00" WEST BEING THE BEARING OF THE SOUTHEASTERLY BOUNDARY OF THAT CERTAIN 2.920 ACRE PARCEL OF LAND AS SHOWN ON THAT CERTAIN RECORD OF SURVEY WHICH WAS FILED FOR RECORD IN BOOK 481 OF MAPS AT PAGE 46, SANTA CLARA COUNTY RECORDS, AND AS FOUND MONUMENTED, WAS USED AS THE BASIS OF BEARINGS FOR THIS MAP.

LEGEND

ALL DISTANCES AND DIMENSIONS ARE SHOWN IN FEET AND DECIMALS THEREOF.

- () RECORD INFORMATION
- [] RECORD INFORMATION IN CONFLICT WITH MEASURED DATA.
- MONUMENTATION, AS NOTED
- SET 3/4" IRON PIPE TAGGED L.S. 7078
- ⊕ SET NAIL WITH 3/4" BRASS TAG TAGGED L.S. 7078
- P.S.E. PUBLIC SERVICE EASEMENT
- P.S.S.E. PRIVATE SANITARY SEWER EASEMENT
- P.S.D.E. PRIVATE STORM DRAINAGE EASEMENT
- P.S.D.R.E. PRIVATE SURFACE DRAINAGE RELEASE EASEMENT
- DISTINCTIVE BORDER
- PROPERTY LINE
- CENTERLINE
- EASEMENT LINE

SHEET 2 OF 2 SHEETS



16025014

740
38-23