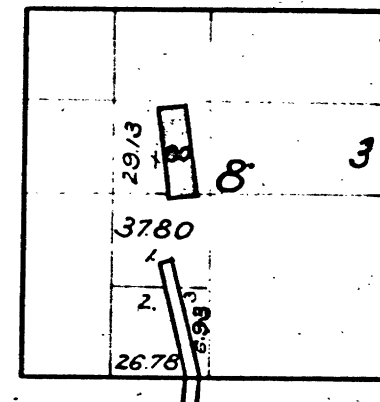


Township N°6 North, Range N°13 East, Mount Diablo Meridian, California.

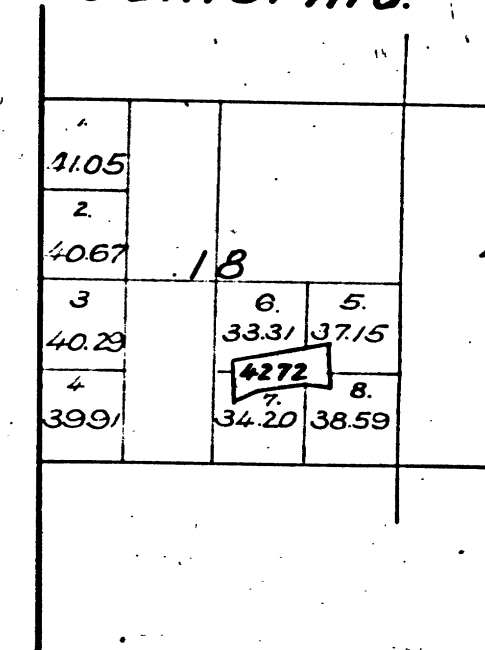
T 6 N. R. 13 E. M. D. M.



The above diagram of Section 8, Township 6 North, Range 13 East, Mount Diablo Meridian, is correctly copied from the original map as amended and on file in this Office.  
U.S. Surveyor General's Office,  
San Francisco, California  
January 6<sup>th</sup> 1892.

W. H. Pratt.  
U.S. Surv. Gen. Cal.

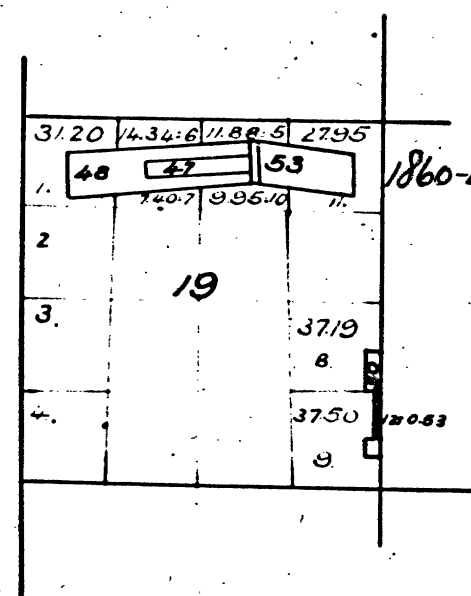
Township N°6 North, Range N°13 East, Mount Diablo Meridian, California.



The above diagram of Section 18, Township N°6 North, Range N°13 East, Mount Diablo Meridian, California, is correctly constructed from official plats on file in this Office.  
U.S. Surveyor General's Office,  
San Francisco, California  
January 30, 1905.

U. S. Graham.  
U.S. Surveyor General for California

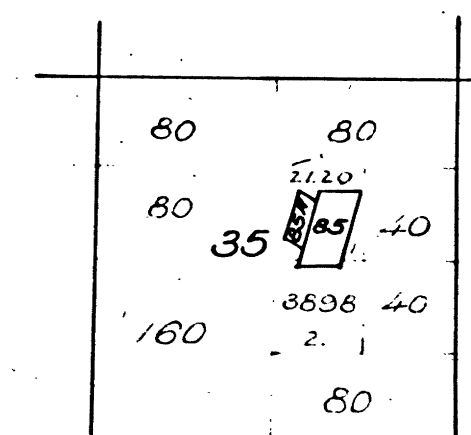
Township N°6 North, Range N°13 East, Mount Diablo Meridian.



The above diagram showing amendments to Section 19, Township N°6 North, Range N°13 East, Mount Diablo Meridian, is correctly copied from the original map as amended and on file in this Office.  
U.S. Surveyor General's Office,  
San Francisco, California,  
November 15<sup>th</sup> 1883.

W. H. Brown.  
U. S. Surv. Genl. Cal.

Township N°6 North, Range N°13 East, Mount Diablo Meridian.



85 Standby Q. M.  
85A. Mini-Site. V59-5

DEPARTMENT OF THE INTERIOR,  
GENERAL LAND OFFICE,  
Washington, D. C. Feb. 5, 1905.  
I hereby certify that this is a true copy  
of the plat of official survey of the lands  
to which it relates, on file in this office.

A. C. Brown, Jr.  
Recorder, General Land Office.

The above diagram of Sec. 35, Township N°6 North, Range N°13 East, Mount Diablo Meridian, as amended, is correctly copied from the original plat, on file in this Office.  
U.S. Surveyor General's Office,  
San Francisco, California,  
December 15, 1897.

Seal.

U. S. Green.  
U.S. Surv Gen. Cal.

CHAINS

CHAINS

10 20 40 60 80 120