

BASIS OF BEARING:

The bearings shown on this map are based on the Record Bearings of Roop Road as found monumented.

SURVEYOR'S CERTIFICATE:

This map correctly represents a survey made by me or under my direction in conformance with the requirements of Chapter 15 of Division 3 of the Business and Professions Code at the request of Floyd Maestri; in October, 1957

Walter J. Hanna Jr.
Walter J. Hanna Jr.
L. L. S. No. 2550

COUNTY SURVEYOR'S CERTIFICATE:

This map has been examined in conformance with the requirements of Chapter 15 of Division 3 of the Business and Professions Code this 25th day of Nov, 1957

James B. Enochs
Act. County Surveyor
By: *[Signature]*
Deputy

1408877

RECORDER'S CERTIFICATE:

Filed for record this 26th day of Nov, 1957, at 1:32 P.m. in Book 88 of Maps at page 37 at the request of Walter J. Hanna Jr.

\$5.00

Syl C. Tully
County Recorder

By: *G. B. O'Brien*
Deputy

RECORD OF SURVEY

PORTIONS LOTS 25 & 32

CATHERINE DUNNE RANCH MAP No. 8

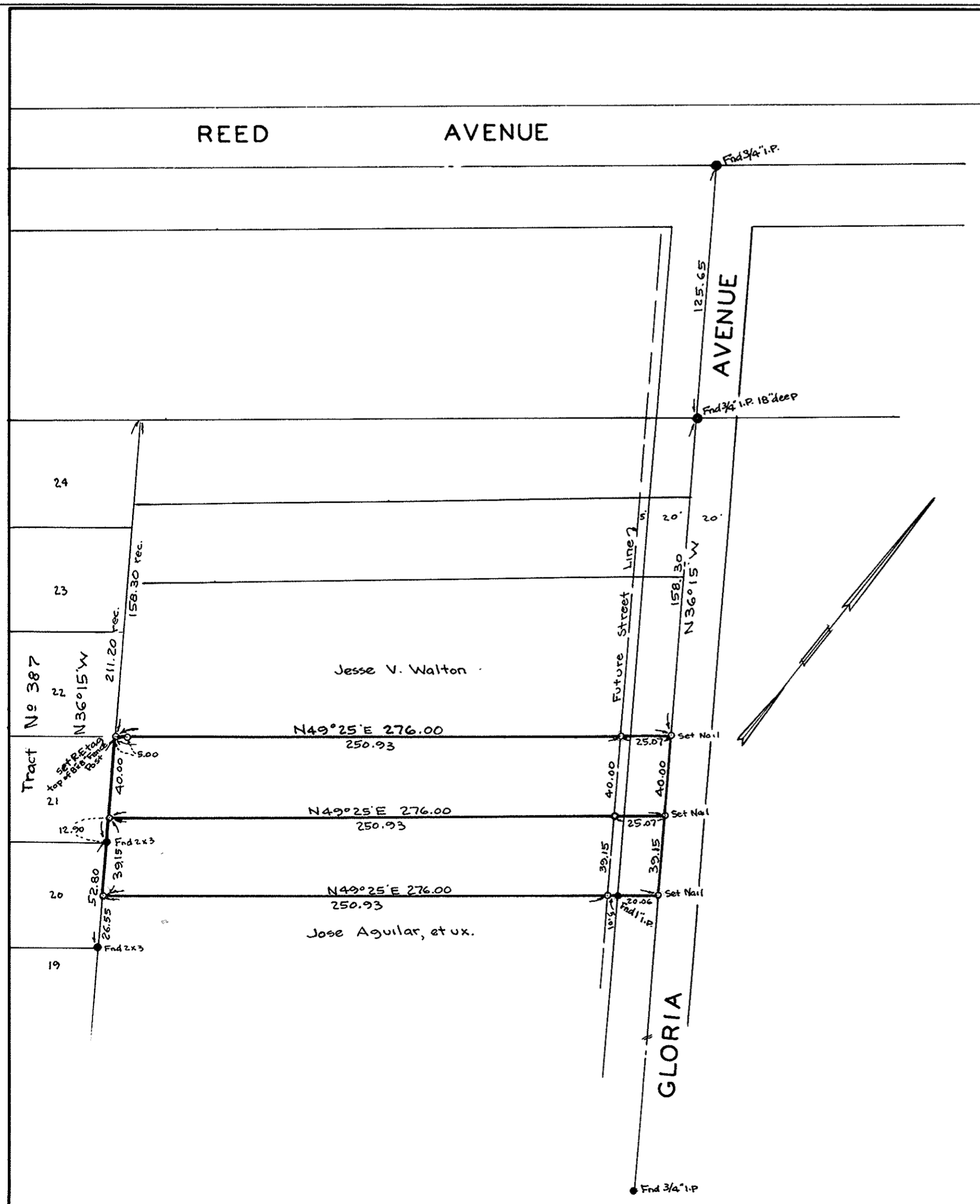
("G" OF MAPS, PAGE 28 & 29)

SANTA CLARA COUNTY, CALIF.

APRIL 1957

1" = 200'

JOB NO. 5504-A



This map correctly represents a survey made under my direction in conformance with the requirements of Chapter 15 of Division 3 of the Business and Professions Code at the request of Charles M. Kelly in November, 1957.

Mark Thomas
Registered Civil Engineer No. 2578

The bearing (N36°15'W) of the northeasterly line of Tract No 387 as shown on map thereof recorded in Book 12 of Maps, page 24, was used as basis of bearings shown upon this map. All distances and dimensions are shown in feet and decimals thereof.
• Indicates 3/4" iron pipe set, unless otherwise noted.
• Indicates monument found.

This map has been examined for conformance with the requirements of Chapter 15 of Division 3 of the Business and Professions Code this 22nd day of Nov, 1957.

James B. Enochs, Acting County Surveyor
By: *[Signature]* Deputy

1408338

Filed for record this 25th day of November, 1957 at 11:23 A. M. in Book 88 of Maps, at page 37 at the request of Mark Thomas & Co.

\$5.00 Syl C. Tully, County Recorder

By: *G. B. O'Brien*
Act. Recorder

RECORD OF SURVEY
IN THE PALA RANCHO
SANTA CLARA COUNTY CALIFORNIA
FOR

CHARLES M. KELLY
SCALE - 1" = 50' NOVEMBER 1957

MARK THOMAS & CO.
CIVIL ENGINEERS & SURVEYORS
SAN JOSE CALIFORNIA