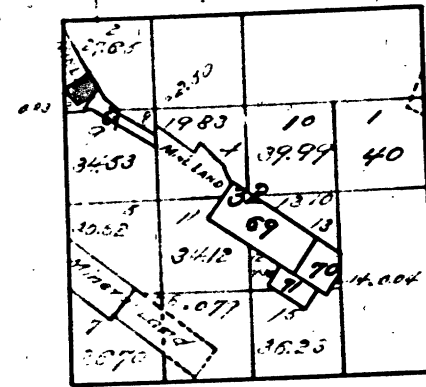


T.3N, R.13E, M.D.M.



Lot 32. Clark Quartz Mine

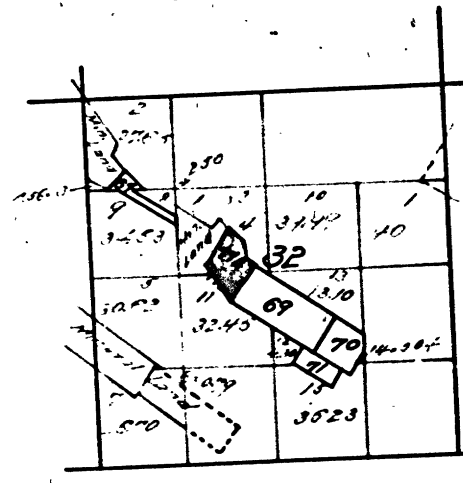
The above diagram of Section 32, T.3N, R.13E, M.D.M. is correctly copied from the amended plat on file in this office.

U.S. Surveyor General's Office,
San Francisco, California,
January 17, 1898

Seal

W.S. Green
U.S. Survey Gen'l Col.

T.3N, R.13E, M.D.M.



77.8 Evening Star Quartz Mine
Mill Site

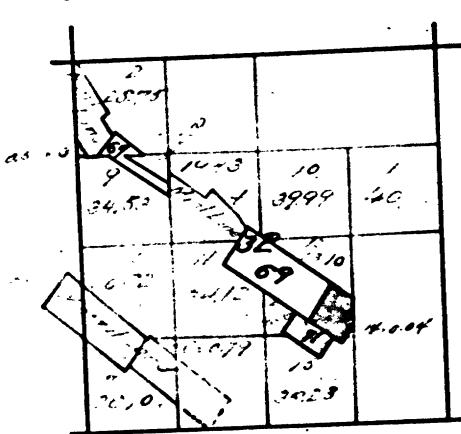
The above diagram of Section 32, Township N° 3 North, Range N° 13 East, Mount Diablo Meridian, is correctly copied from the original map as amended and on file in this office.

U.S. Surveyor General's Office,
San Francisco, California,
May 10th 1895

Seal

W.S. Green
U.S. Survey Gen'l Col.

T.3N, R.13E, M.D.M.



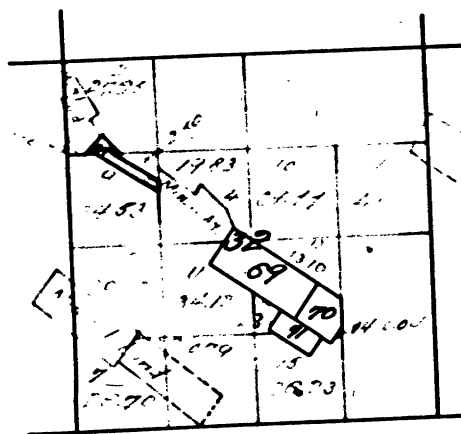
69 Blair Can Q. M. and M.S. Blair & Co's Location
70 The Blair Co's
71 Mill Site } 3139

The above diagram of Section 32, Township 3 North, Range 13 East, Mount Diablo Meridian, is correctly copied from the original map as amended and on file in this office.

U.S. Surveyor General's Office,
San Francisco, California,
August 25th 1892.

W.S. Green
U.S. Survey Gen'l Col.

T.3N, R.13E, M.D.M.



3573.4
67 Gold Hill Quartz Mine 2nd survey

The above diagram of Section 32, Township 3 North, Range 13 East, Mount Diablo Meridian, is correctly copied from the original map as amended and on file in this office.

U.S. Surveyor General's Office,
San Francisco, California,
July 13th 1893

W.S. Green
U.S. Survey Gen'l Col.

DEPARTMENT OF THE INTERIOR,
GENERAL LAND OFFICE,
Washington, D. C. Feb. 5, 1902:

I hereby certify that this is a true copy of the plat of official survey of the lands to which it relates, on file in this office.

W.S. Green
Recorder, General Land Office.

T 3 N R 13 E M D