

BL 22 Pg 51

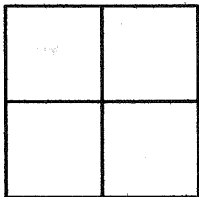
CORNER RECORD

Document Number CR 2490

City of BERKELEY

County of ALAMEDA, California

rief Legal Description WELL MONUMENT LOCATED WITHIN SPRUCE ST.



CORNER RECORD

Government Corner ☐ Control ☐  
Meander ☐ Property ☒  
Rancho ☐ Other ☐  
Date of Survey 08/23/2005

COORDINATES  
(Optional)

N. \_\_\_\_\_  
E. \_\_\_\_\_  
Zone \_\_\_\_\_ Datum \_\_\_\_\_  
Elev. \_\_\_\_\_

Corner — Left as found ☐ Found and tagged ☐ Established ☐ Reestablished ☒ Rebuilt ☐

Identification and type of corner found: Evidence used to identify or procedure used to establish or reestablish the corner:  
SET STANDARD COUNTY WELL MONUMENT IN FRONT OF 757 SPRUCE ST.

LOCATED WITHIN SPRUCE ST.

STAMPED LS 4520

A description of the physical condition of the monument as found and as set or reset:  
FOUND POINTS AS SHOWN ON PAGE 2.

SURVEYOR'S STATEMENT

This Corner Record was prepared by me or under my direction in conformance with  
the Land Surveyors' Act on JUNE 2, 20 05.

Signed Vincent H. Cunha L.S. Number LS 4520  
VINCENT H. CUNHA EXPIRES: 9/30/06

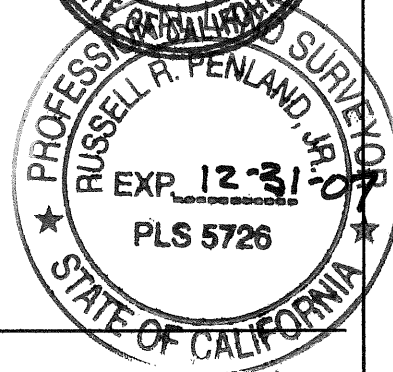
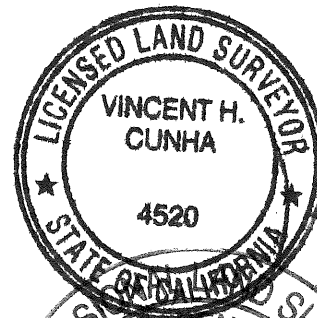
COUNTY SURVEYOR'S STATEMENT

This Corner Record was received July 20 19 05 and examined  
and filed 12-3-2005.

Signed Russell R. Penland, Jr. Title COUNTY SURVEYOR

County Surveyor's Comment

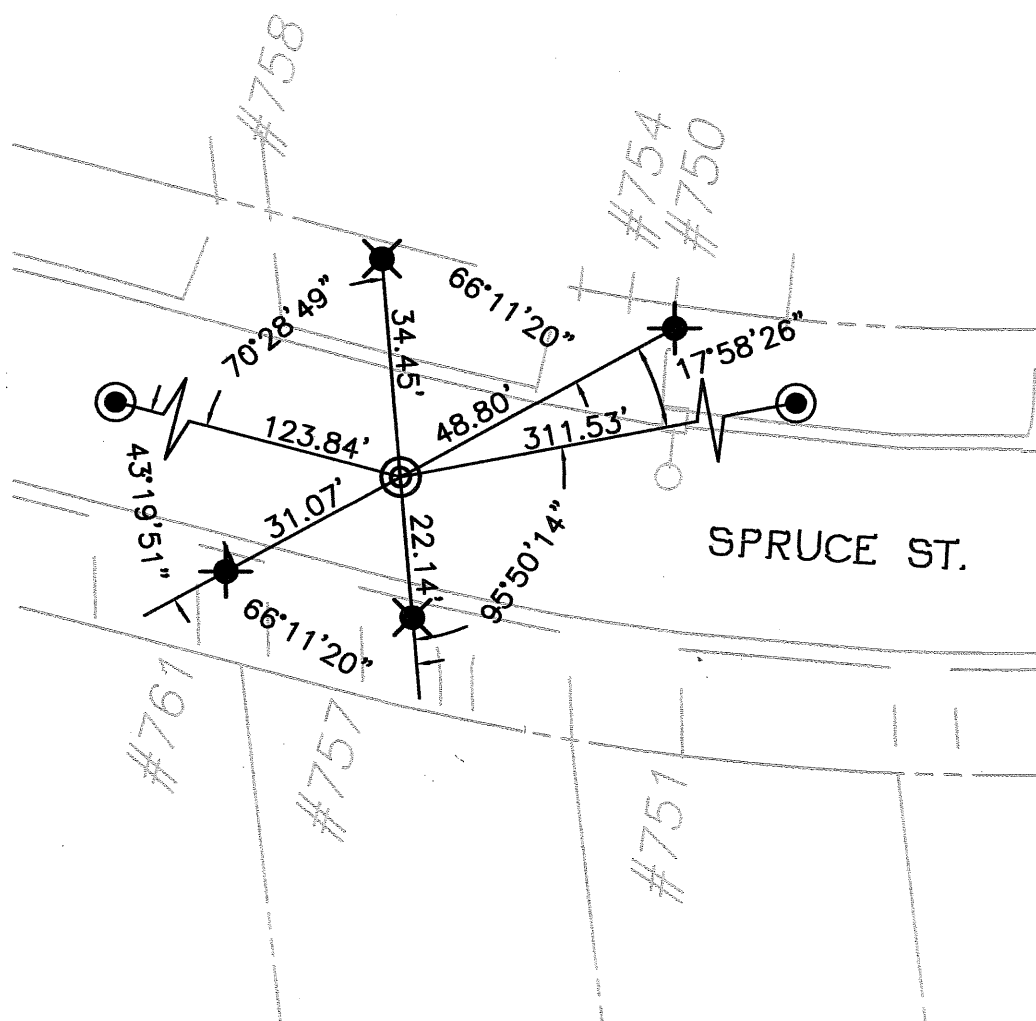
SEE PRIOR CR 2416



# LEGEND

- ✕ FOUND CROSS
- FOUND STANDARD STREET MONUMENT
- ✕ FOUND NAIL AND TAG LS 4520
- ◎ SET STANDARD STREET MONUMENT STAMPED LS 4520

SCALE 1"=30'



# REFERENCE

CORNER RECORD 2416, ALAMEDA COUNTY RECORDS