

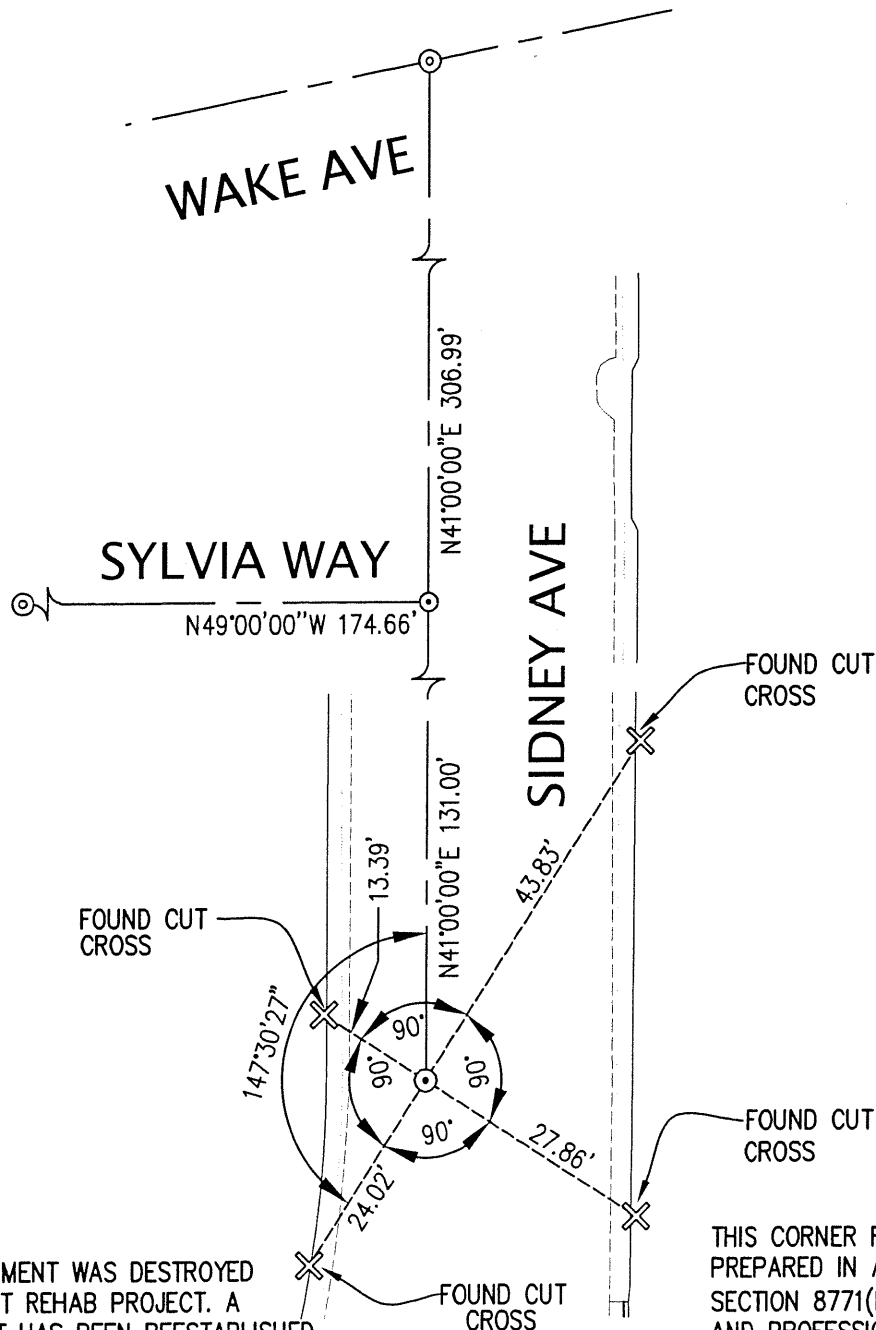


**LEGEND:**

- SET CITY OF SAN LEANDRO BRASS DISC, STAMPED LS 9225
- ✕ CUT CROSS
- ==== CURB & GUTTER
- ⊙ FOUND 1/4" PIN IN CONCRETE



0 10' 20' 40'  
Scale 1" = 20 ft



ORIGINAL MONUMENT WAS DESTROYED BY A PAVEMENT REHAB PROJECT. A NEW MONUMENT HAS BEEN REESTABLISHED IN THE SAME LOCATION AS THE EXISTING MONUMENT PER TIES SHOWN ON CR 7697

THIS CORNER RECORD IS BEING PREPARED IN ACCORDANCE WITH SECTION 8771(b) OF THE BUSINESS AND PROFESSIONS CODE, (PROFESSIONAL LAND SURVEYORS ACT). THIS IS THE POST-CONSTRUCTION CORNER RECORD.

KW#A15598