

TRACT 10096

CELADON

CONSISTING OF 2 SHEETS

BEING A SUBDIVISION FOR A MAXIMUM OF 46 CONDOMINIUM UNITS OF THE DESIGNATED REMAINDER AS SHOWN ON THAT MAP OF TRACT 9840, FILED FOR RECORD IN BOOK 814 OF MAPS, PAGES 39 THROUGH 42, OFFICIAL RECORDS OF SANTA CLARA COUNTY, AND LYING WITHIN THE CITY OF SAN JOSE, COUNTY OF SANTA CLARA, STATE OF CALIFORNIA.

MARCH, 2012



1570 Oakland Road San Jose, CA 95131

BASIS OF BEARINGS

THE BEARING NORTH 34°09'41" WEST OF THE MONUMENT LINE FROM WC289 TO WC284 AS SHOWN ON THAT CERTAIN RECORD OF SURVEY FILED FOR RECORD IN BOOK 794 OF MAPS, PAGES 1 THROUGH 23, SANTA CLARA COUNTY RECORDS, AND AS FOUND MONUMENTED, WAS ADOPTED AS THE BASIS OF BEARINGS.

NOTES

1. DISTANCES AND DIMENSIONS ARE SHOWN IN FEET AND DECIMALS THEREOF.
2. THE DISTINCTIVE BORDER DENOTES THE BOUNDARY OF THE SUBDIVISION.
3. THE AREA WITHIN THE DISTINCTIVE BORDER IS 1.91 ACRES, MORE OR LESS.

LEGEND

- DISTINCTIVE BORDER LINE
- LOT LINE
- EASEMENT LINE
- RECORD DOCUMENT REFERENCES:

R4: PARCEL MAP, R1: *R05 758-M-1, R2: *R05 794-M-1, R3: TRACT 9840, 814-M-39, R5: TRACT 9549, 772-M-5
* RECORD DISTANCES ARE GRID, MULTIPLY DISTANCES BY 1.00005101 TO OBTAIN GROUND LEVEL DISTANCES.

STD. CITY MONUMENT FOUND, 2.5" BRASS DISK IN 6" CONC. COLUMN IN RND. MONUMENT BOX, UNLESS OTHERWISE NOTED
3/4" IRON PIPE FOUND TAGGED "LS 7871", UNLESS NOTED
STANDARD CITY MONUMENT, 2.5" BRASS DISK IN 6" CONC. COLUMN IN RND. MONUMENT BOX, SET & STAMPED "LS 7422"

NAIL & TAG SET & STAMPED "LS 7422", OFFSET 7' FROM MONUMENT LINE ALONG LOT LINE, UNLESS OTHERWISE SHOWN
3/4" IRON PIPE SET & TAGGED "LS 7422", UNLESS NOTED
LINE NOT DRAWN TO SCALE

- (T) TOTAL OF DIMENSIONS ALONG THIS LINE OR CURVE
- (M-M) MONUMENT TO MONUMENT DIMENSIONS
- (...)R# DIMENSION AS DESCRIBED IN RECORD
- COE COVENANT OF EASEMENT
- EAE EMERGENCY ACCESS EASEMENT
- PSE PUBLIC SERVICE EASEMENT
- SE SIDEWALK EASEMENT
- PSDE PRIVATE STORM DRAIN EASEMENT
- PSSE PRIVATE SANITARY SEWER EASEMENT
- WLE WATER LINE EASEMENT

1 INCH = 30 FEET

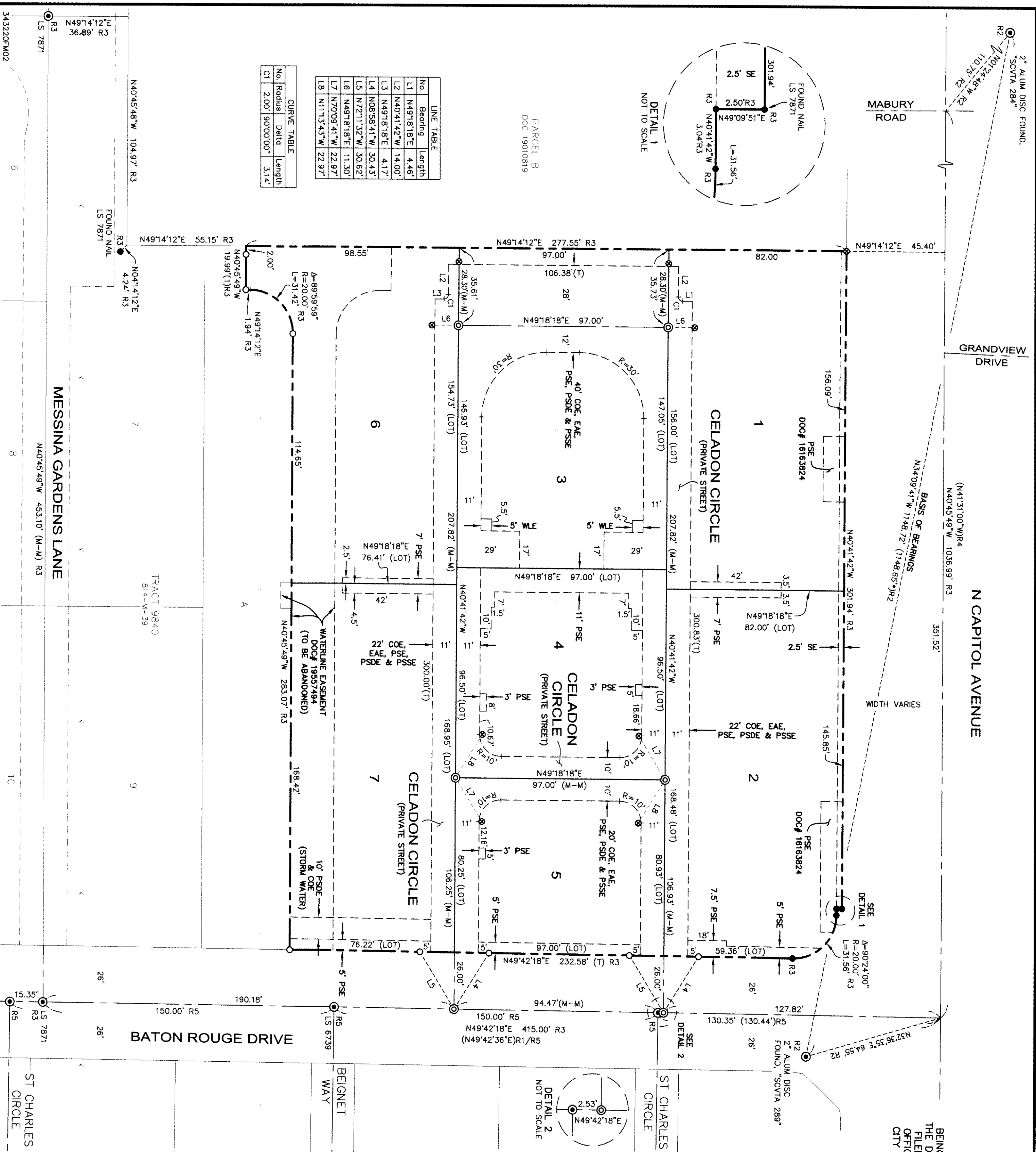
LOT#	1	2	3	4	5	6	7
NUMBER OF APPROVED UNITS	8	9	4	4	4	8	9

PT10-034

SHEET 2 OF 2 SHEETS

HMH 3433.20.240

21662169



No.	Bearing	Length
L1	N49°18'18"E	4.46'
L2	N40°41'42"W	14.00'
L3	N49°18'18"E	4.17'
L4	N08°58'41"W	30.43'
L5	N72°11'32"W	30.62'
L6	N49°18'18"E	11.30'
L7	N70°09'41"W	22.97'
L8	N11°3'43"W	22.97'

No.	Radius	Delta	Length
C1	2.00'	90°00'00"	3.14'

