

# CORNER RECORD

Agency Index

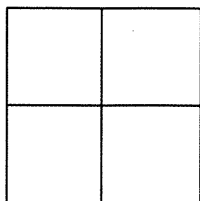
BK 100 PG 30

Document Number

CR 10388City of EDEN TOWNSHIPCounty of ALAMEDA, CaliforniaBrief Legal Description PIN MONUMENT LOCATED WITHIN THE INTERSECTION OF VIA CORALLA AND VIA CHIQUITA

## CORNER TYPE

## COORDINATES (Optional)



Government Corner ☐ Control ☒  
Meander ☐ Property ☐  
Rancho ☐ Other ☐

N. 2069876± E. 6089054±

Elevation \_\_\_\_\_

Units Metric ☐ U.S. Survey Foot ☐

Horizontal Datum \_\_\_\_\_

Zone \_\_\_\_\_ Epoch Date \_\_\_\_\_

Vertical Datum \_\_\_\_\_

☐ Complies with Public Resources Code §§8801-8819☐ Complies with Public Resources Code §§8890-8902Date of Survey 6/6/17PLS Act Ref: ☐ 8765(d) ☒ 8771 ☐ 8773 ☐ Other: \_\_\_\_\_

Corner/  
Monument: ☒ Left as found ☐ Established ☐ Rebuilt ☐ Pre-Construction  
☐ Found and tagged ☐ Reestablished ☐ Referenced ☒ Post-Construction

Narrative of corner identified and monument as found, set, reset, replaced, or removed:

☐ See sheet #2 for description(s) : SEE CR 9411

FOUND PIN IN CONCRETE IN MONUMENT WELL.

FOUND AND SET POINTS AS SHOWN ON PAGE 2.

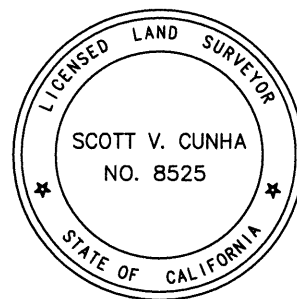
THIS POINT WAS FOUND IN GOOD CONDITION AFTER A CONSTRUCTION PROJECT IN THE VICINITY.  
THE TIES SHOWN HEREON ARE FOR THE PURPOSE OF PERPETUATING FOUND MONUMENTATION.  
NO CLAIM IS MADE AS TO THE RELATIONSHIP OF THE POINTS OR LINES SHOWN HEREON TO TRUE  
BOUNDARY LOCATION.

## SURVEYOR'S STATEMENT

This Corner Record was prepared by me or under my direction in conformance with

the Professional Land Surveyors' Act on JUNE 16, 2017.Signed Scott V. Cunha P.L.S. or R.C.E. No. LS 8525

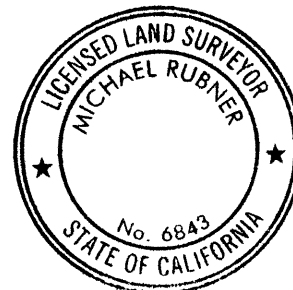
SCOTT V. CUNHA



## COUNTY SURVEYOR'S STATEMENT

This Corner Record was received 20 JULY, 2017and examined and filed 22 AUGUST, 2017.Signed Michael Rubner P.L.S. or R.C.E. No. 6843Title COUNTY SURVEYOR

County Surveyor's Comment

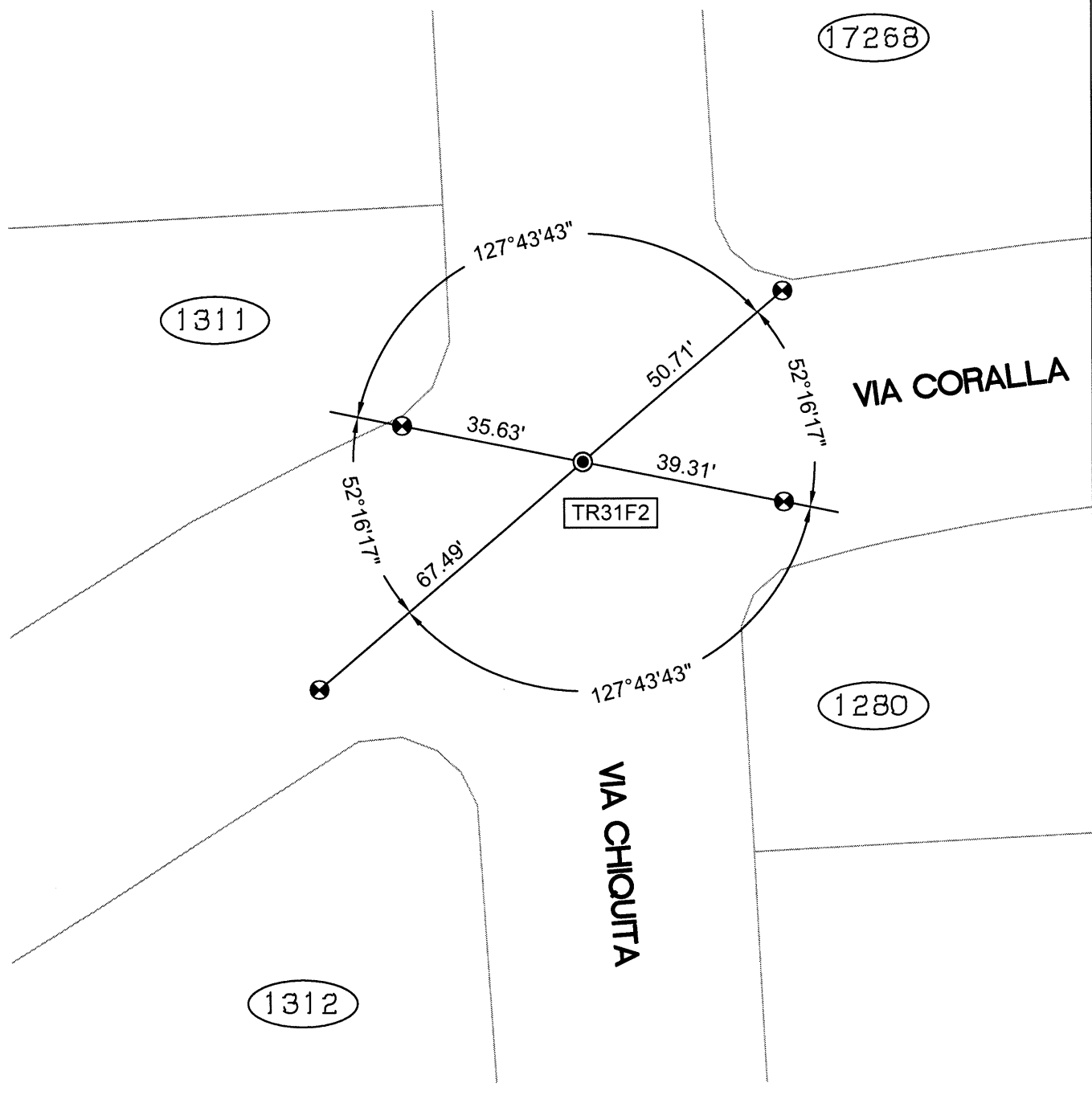


SPEC-2315-POST

SCALE: 1"=30'

## LEGEND

- FOUND IRON PIN IN CONCRETE IN MONUMENT WELL
- ⊗ FOUND CUT CROSS IN WALK
- ✕ FOUND CUT CROSS IN CURB
- ✕ FOUND MAG AND SHINER
- FOUND REBAR & CAP STAMPED "CEI RP"
- AA##A# ALAMEDA COUNTY MONUMENT ID
- 19592 REFERENCE STREET ADDRESS



216178-mesa coralla-CR08 post