

CORNER RECORD

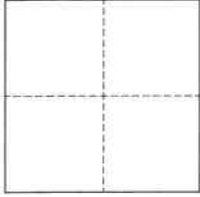
Agency Index BK 150 PG 37
Document Number CR 16346
County of Alameda, California

City of Fremont

Brief Legal Description Intersection of Seville Place and Valencia Court

CORNER TYPE

COORDINATES (Optional)



☐ Government Corner ☒ Control
☐ Meander ☐ Property
☐ Rancho ☐ Other

Date of Survey 2022-05-26

N. _____ E. _____

Elevation _____

Units ☐ Metric ☐ U.S. Survey Foot

Horizontal Datum _____

Zone _____ Epoch Date _____

Vertical Datum _____

☐ Complies with Public Resources Code §§8801-8819

☐ Complies with Public Resources Code §§8890-8902

PLS Act Ref.: ☐ 8765(d) ☒ 8771 ☐ 8773 ☐ Other:

Corner/ Monument: ☒ Left as found ☐ Established ☐ Rebuilt ☒ Pre-Construction

☐ Found and tagged ☐ Reestablished ☒ Referenced ☐ Post-Construction

Narrative of corner identified and monument as found, set, reset, replaced, or removed:

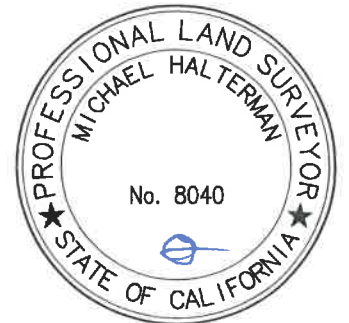
☒ See sheet #2 for description(s):

SURVEYOR'S STATEMENT

This Corner Record was prepared by me or under my direction in conformance with

the Professional Land Surveyors' Act on June 2, 2022

Signed [Signature] P.L.S. or R.C.E. No. 8040



COUNTY SURVEYOR'S STATEMENT

This Corner Record was received _____

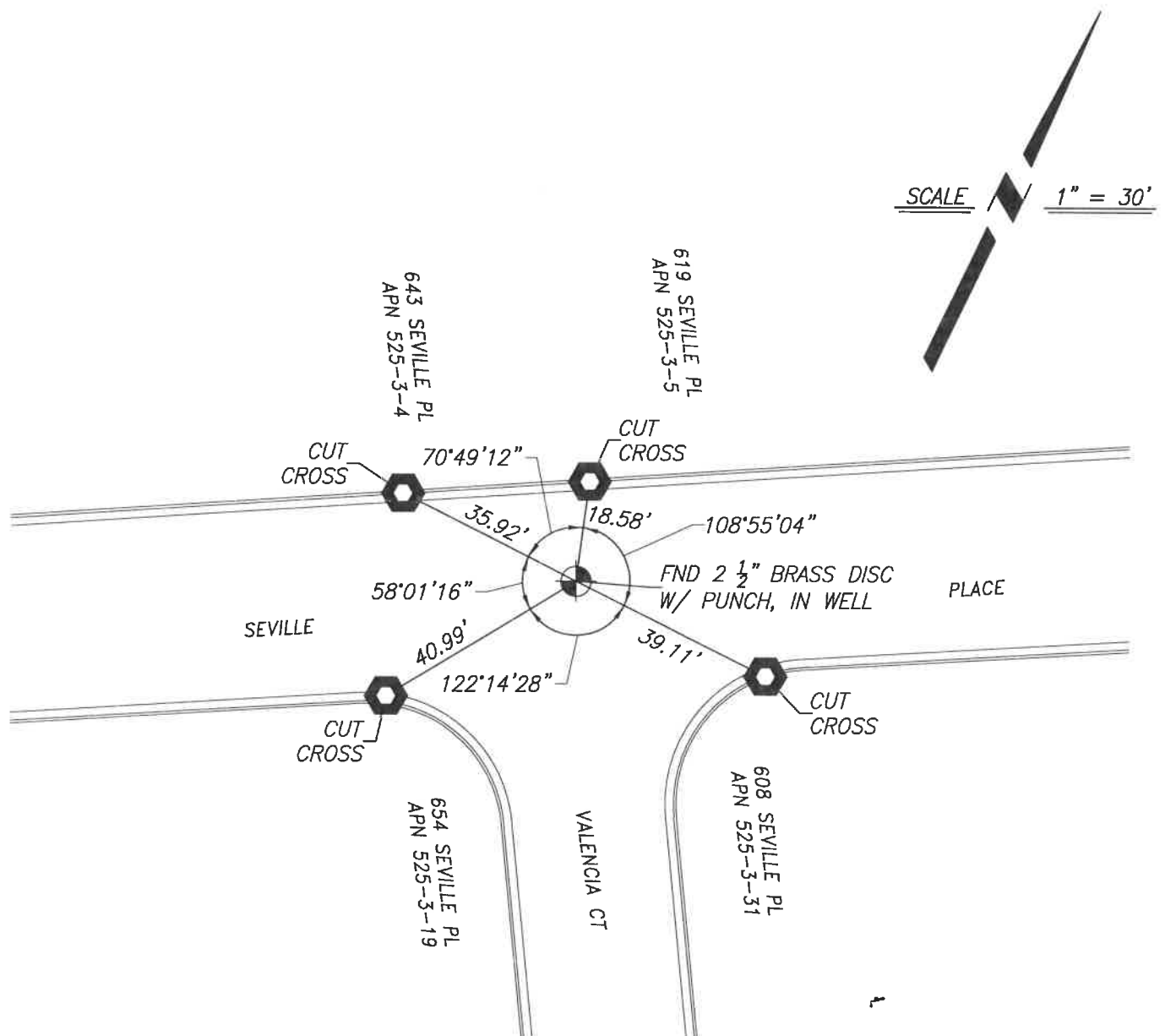
and examined and filed DEC 12 2022

Signed D. Ian Wilson P.L.S. or R.C.E. No. 7010

Title ALAMEDA COUNTY SURVEYOR

County Surveyor's Comment







REFERENCE

(A) TRACT MAP 2756, FILED ON JULY 11, 1966, IN BOOK 53 OF MAPS PAGES 13-16, ALAMEDA COUNTY RECORDS.

LEGEND

-  FOUND MONUMENT IN WELL, 2 1/2" BRASS DISC WITH PUNCH, CITY OF FREMONT MONUMENT
-  CUT CROSS ON CONCRETE AS REFERENCE POINT

NOTES

1. ALL REFERENCES ARE ALAMEDA COUNTY RECORDS