

BASIS OF BEARINGS

THE BEARING OF NORTH 13°33'40" WEST OF THE CENTERLINE OF VISTA WAY, AS SHOWN ON THAT CERTAIN PARCEL MAP FILED FOR RECORD IN BOOK 637 OF MAPS AT PAGES 25 & 26, SANTA CLARA COUNTY RECORDS, WAS TAKEN AS THE BASIS OF ALL BEARINGS SHOWN HEREON.

LEGEND

- DISTINCTIVE BORDER LINE
- CENTERLINE
- MONUMENT LINE
- RECORD INFORMATION
- EASEMENT LINE
- EXCEPTION TO COMMON AREA
- PUBLIC SERVICE, UTILITY AND SIDEWALK EASEMENT
- PRIVATE INGRESS & EGRESS EASEMENT
- FOUND CITY STANDARD MONUMENT
- SET 3/4" IRON PIPE & PLUG L.S. 6236 OR AS SHOWN
- FOUND 3/4" IRON PIPE (SET PER 340 M 10 OR AS NOTED)

- THE AREA WITHIN THE DISTINCTIVE BORDER LINE IS 6.089 ± ACRES.
- ALL DISTANCES ARE IN FEET AND DECIMALS THEREOF.
- MONUMENTS #1 AND #2 ARE BASED ON THE CALIFORNIA COORDINATE SYSTEM 83(1992), ZONE 3, SHOWN ON THE CITY OF MILPITAS ENGINEERING DIVISION BENCHMARK SYSTEM DATED FEBRUARY 21, 2002. MULTIPLY GROUND DISTANCES BY THE FACTOR 0.9999461 TO OBTAIN GRID DISTANCES.

MONUMENT #1 (BRASS DISC IN MON WELL) NORTHING 1,980,044.75 EASTING 6,158522.31
MONUMENT #2 (BRASS DISC IN MON WELL) NORTHING 1,981,235.82 EASTING 6,158256.60



Scale 1" = 50 ft



PARCEL MAP

FOR: CONDOMINIUM PURPOSES
ALL OF PARCEL A AS SHOWN ON THAT CERTAIN PARCEL MAP FILED FOR RECORD ON JUNE 29, 1988 IN BOOK 588 OF MAPS AT PAGE 10, SANTA CLARA COUNTY RECORDS AND LYING IN THE

CITY OF MILPITAS
SANTA CLARA COUNTY
CALIFORNIA

SCALE: 1" = 50'
CONSISTING OF 3 SHEETS
MAY, 2005

KIER & WRIGHT
CIVIL ENGINEERS & SURVEYORS, INC.
3350 Scott Boulevard, Building 22
Santa Clara, California 95054

WRIGLEY WAY

VISTA WAY

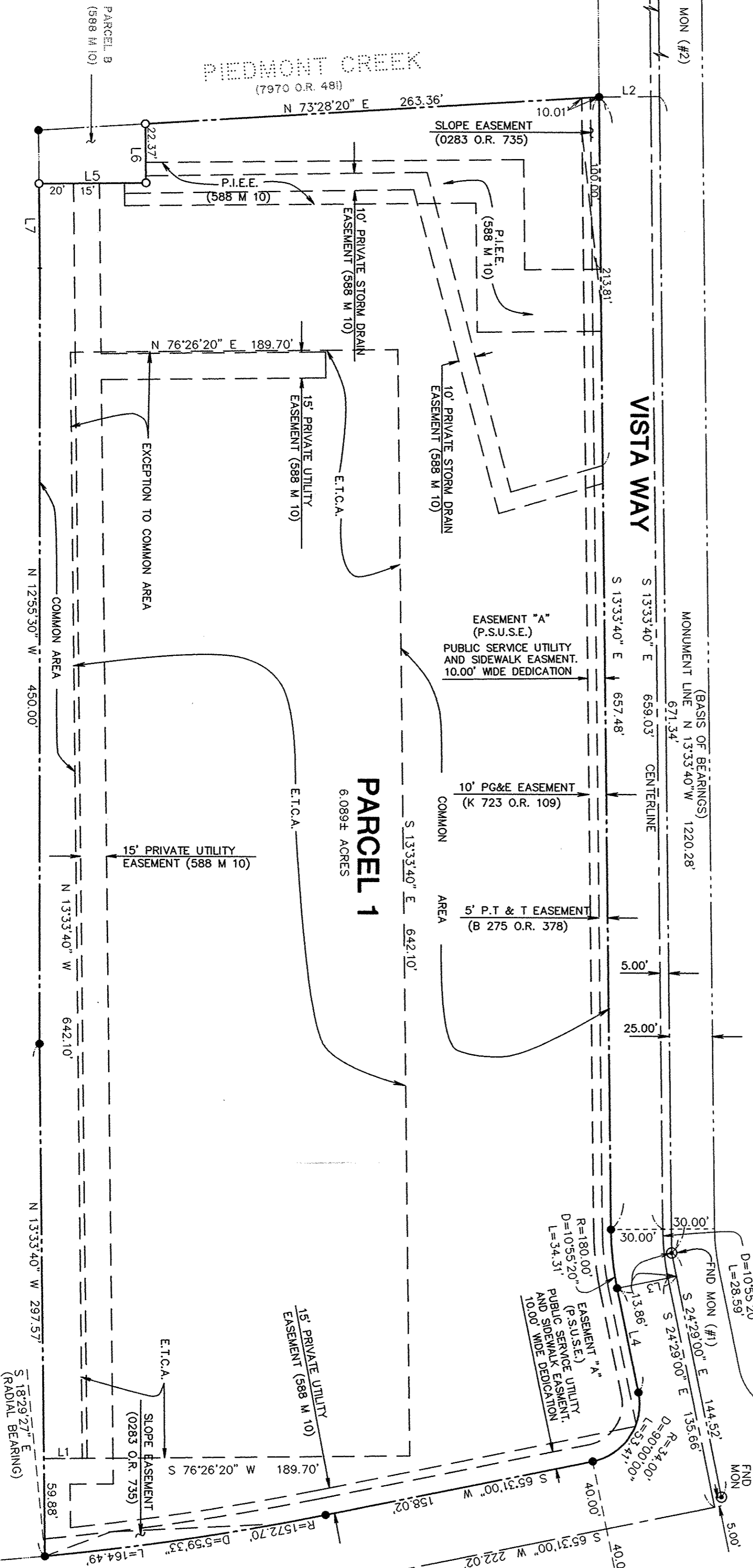
PIEDMONT CREEK
(7970 O.R. 481)

YOSEMITE DRIVE

PARCEL 1
6.089± ACRES

LANDS OF UNION PACIFIC CORP

LINE	BEARING	DISTANCE
L1	S 76°26'20" W	22.28'
L2	N 76°26'20" E	35.00'
L3	S 65°31'00" W	35.00'
L4	S 24°29'00" E	61.66'
L5	N 76°26'20" E	62.00'
L6	N 13°33'40" W	34.21'
L7	N 13°33'40" W	49.17'



18584364