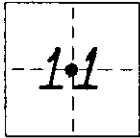


# CORNER RECORD

COUNTY OF ~~TRIN~~ **MONO** T. **9N** R. **22E** **M.D.B.** MERIDIAN CALIFORNIA  
 CORNER TYPE: GOV'T. CORNER ☒ MEANDER ☐ RANCHO ☐ CONTROL ☐ OTHER ☒  
 CORNER IDENTIFICATION - DATE OF VISIT **16 OCT** 19 **85**



C 1/11

RCE # 21435

CORNER - LEFT AS FOUND ☒ FOUND AND TAGGED ☐ REESTABLISHED OBLITERATED CORNER ☐ REBUILT ☐

PHYSICAL DESCRIPTION OF CORNER FOUND: EVIDENCE AND METHOD USED TO IDENTIFY OR REESTABLISH **End in good condition 7/8" D.D.I.P., stamped R.E. #21435 on side, flush w/ground, APPROX. 0'± W of 1.5"± steel post, 3.5' above grnd, 20'± NW of large tree, 200'± UP vertical rise, 1300'± from HWY 395, 600'± S of HWY 89 - Monitor Pass. H.D.**

PHYSICAL DESCRIPTION OF MONUMENTS REBUILT OR PERPETUATED

**Photos Taken: 09200 - 215301**

**ROLL #4 EXPOSURES - #8 Close UP Looking S**

**\*9 View Looking N toward HWY 89**

**\*10 View from above cnr - Looking E down hill.**

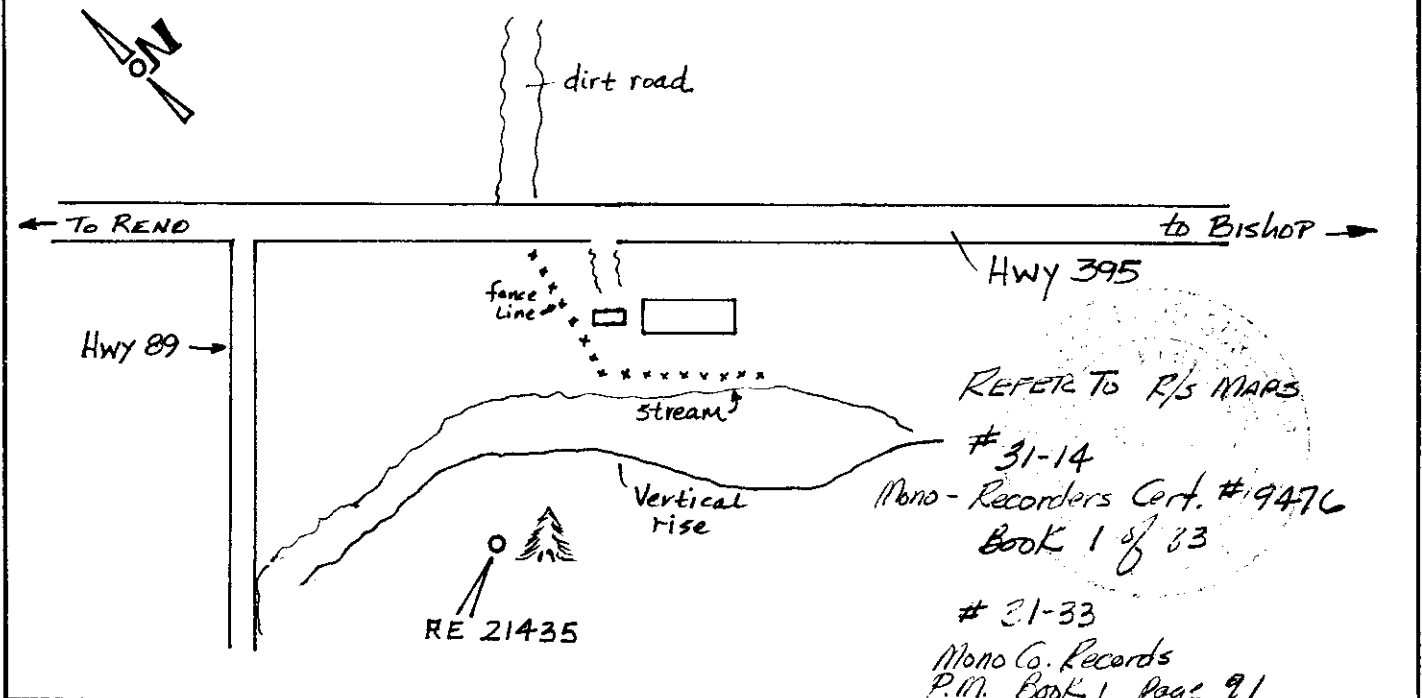
**\*11 Looking NW toward nearby rocks and mountain.**

CALIFORNIA COORDINATE SYSTEM ORDER: FIRST ☐ SECOND ☐ THIRD ☐

STATIONS USED: NGS (USC & GS) ☐ STATE ☐ COUNTY ☐ OTHER ☐ STATION \_\_\_\_\_ STATION \_\_\_\_\_

ZONE \_\_\_\_\_ ELEVATION \_\_\_\_\_ NORTHINGS (Y) \_\_\_\_\_ EASTINGS (X) \_\_\_\_\_

SKETCH: (Include reference tie or witness points, remarks and topo of area)



## SURVEYOR'S CERTIFICATE

THIS CORNER RECORD WAS PREPARED BY ME OR UNDER MY DIRECTION IN CONFORMANCE WITH THE LAND SURVEYORS ACT ON **16 Oct** 19 **85**

SIGNED: **MUL Allstead**

**Caltrans P.C.**

SEAL

## COUNTY SURVEYOR'S CERTIFICATE

THIS CORNER RECORD WAS RECEIVED \_\_\_\_\_ 19 \_\_\_\_\_ AND EXAMINED AND FILED \_\_\_\_\_ 19 \_\_\_\_\_

BY: **RICHARD BROADMAN**

TITLE: **Survey of Corner**

DOCUMENT No. **21435**

STATEMENT ON BACK OF SHEET

YES ☐ NO ☒