

CHATEAU DE MONTAGNE

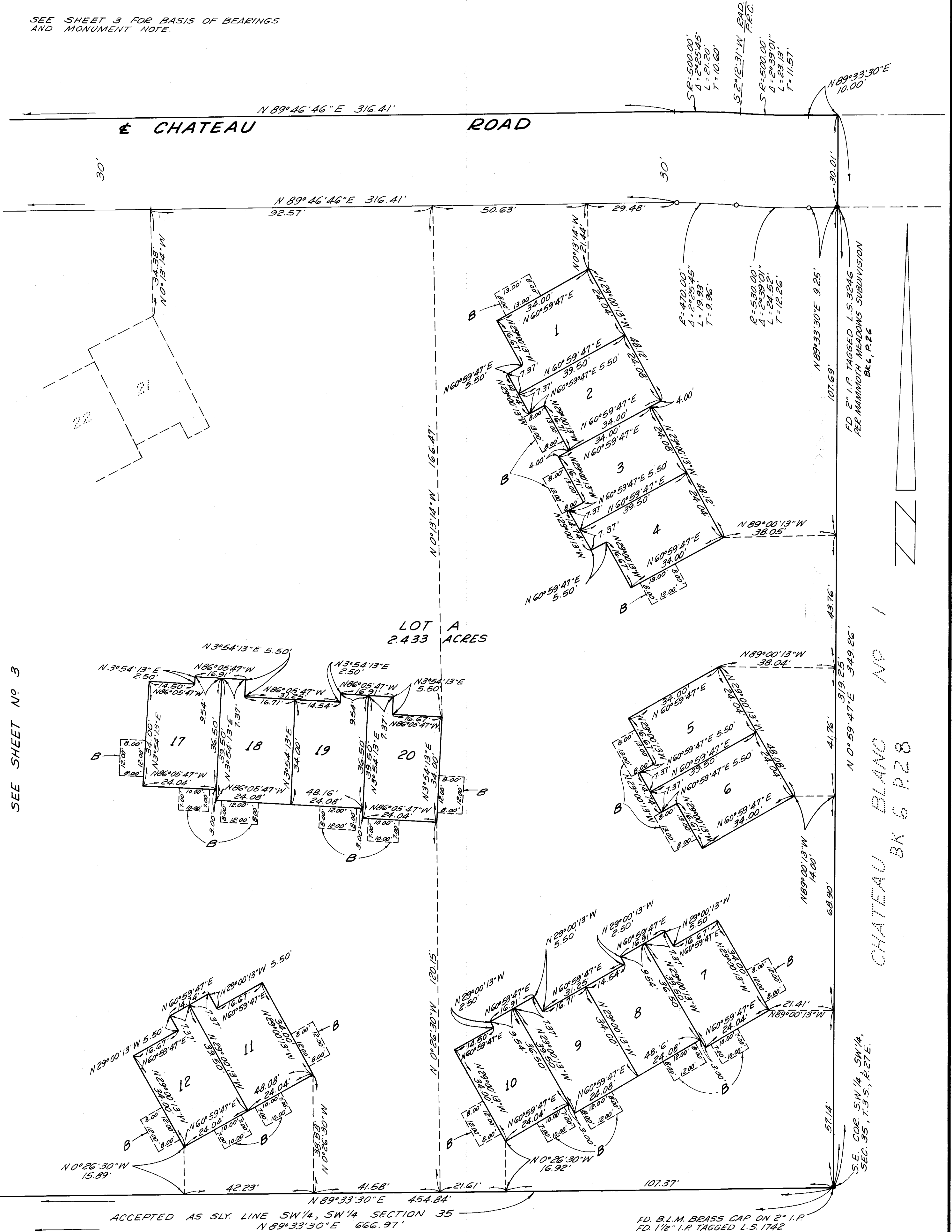
MONO COUNTY, CALIFORNIA

BEING A SUBDIVISION OF A PORTION OF THE SOUTHEAST QUARTER
OF THE SOUTHWEST QUARTER OF THE SOUTHWEST QUARTER OF
SECTION 35, TOWNSHIP 3 SOUTH, RANGE 27 EAST OF THE MOUNT
DIABLO MERIDIAN, COUNTY OF MONO, CALIFORNIA.

JULY, 1970
25 LOTS & LOT A

GERALD F. OLDENBURG, L.S. 3246
3.179 ACRES

SEE SHEET 3 FOR BASIS OF BEARINGS
AND MONUMENT NOTE.



28.7-18.17A