

SURVEY TIES

LINE	DIRECTION	DISTANCE
T1	S 75°24'22" E	76.71'
T2	N 19°31'40" E	43.45'
T3	N 38°06'36" E	73.56'
T4	N 17°26'49" E	51.14'
T5	N 20°56'10" E	50.92'

NOTE:
THE SURVEY TIES AS SHOWN HEREON ARE TO
THE VERTICAL PROJECTIONS OF THE INSIDE
FINISHED FACE OF THE STUD WALLS.

A DRAINAGE EASEMENT DATA

CL 10.00' PRIVATE DRAINAGE EASEMENT PER TRACT 36-178

LINE	DIRECTION	DISTANCE	
SD1	S 88°09'35" W	195.13'	
SD2	N 09°45'19" E	13.28'	
SD3	N 01°00'12" E	26.18'	
SD4	S 88°52'24" E	83.83'	
SD5	S 88°52'56" E	47.89'	
SD6	S 79°29'59" E	79.34'	
SD7	S 79°29'59" E	14.98'	
SD8	N 01°07'26" W	93.07'	
SD9	N 01°07'26" W	37.32'	
SD10	N 88°52'56" W	84.02'	
SD11	S 16°11'00" W	41.70'	
SD12	N 78°23'33" E	70.13'	
SD13	N 83°40'45" E	4.22'	
SD14	S 35°59'52" W	35.22'	
SD15	S 27°31'29" W	52.05'	
SD16	S 12°07'37" E	67.93'	
SD17	N 53°06'23" W	94.36'	
SD18	N 08°25'06" E	3.15'	
CURVE	RADIUS	LENGTH	DELTA
SD-C1	25.00'	39.58'	90°42'59"

B SEWER EASEMENT DATA

CL 10.00' SEWER EASEMENT TO M.C.W.D.

LINE	DIRECTION	DISTANCE
S1	N 88°27'36" W	53.63'
S2	S 09°32'39" E	51.29'

C WATERLINE EASEMENT DATA

CL 10.00' WATERLINE EASEMENT TO M.C.W.D.

LINE	DIRECTION	DISTANCE
W1	N 88°52'56" W	105.03'
W2	S 43°27'36" E	31.76'
W3	S 88°27'36" E	67.00'
W4	S 41°38'22" E	23.89'
W5	N 48°42'17" W	9.50'
W6	S 41°17'43" W	84.57'
W7	S 41°17'43" W	16.83'

F CL ACCESS EASEMENT DATA

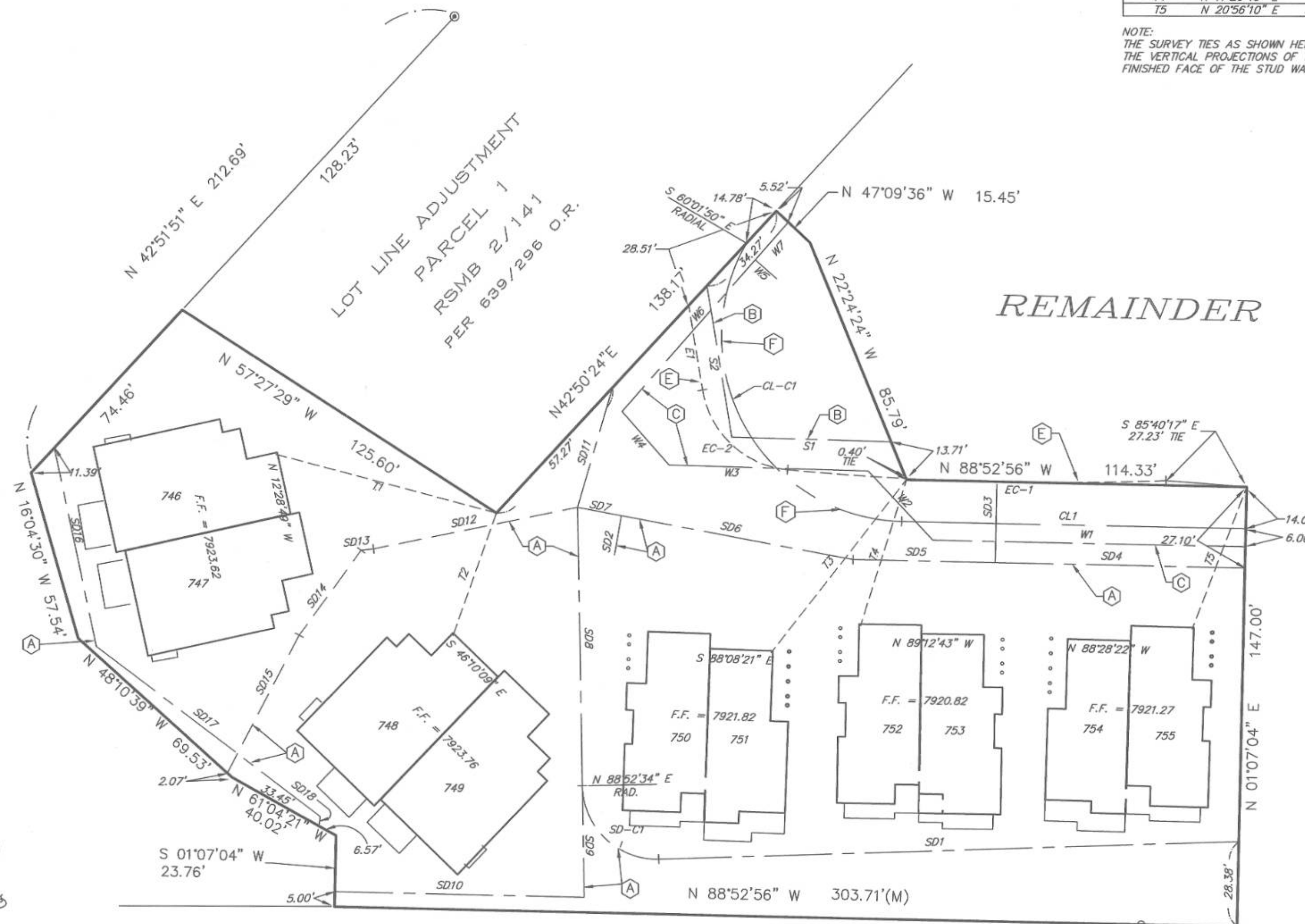
CL 40.00' PRIVATE ACCESS EASEMENT

LINE	DIRECTION	DISTANCE	
CL1	N 88°52'56" W	115.63'	
CURVE	RADIUS	LENGTH	DELTA
CL-C1	62.00'	128.61'	118°51'05"

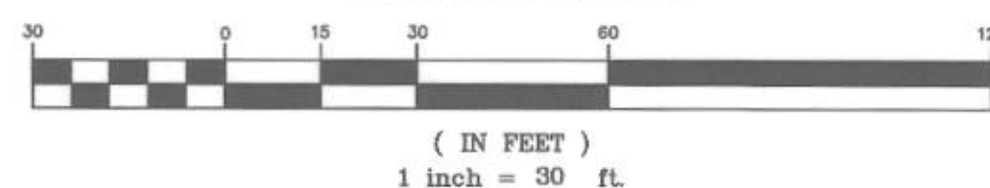
E CL EXISTING ACCESS EASEMENT DATA

CL 40.00' PRIVATE ACCESS EASEMENT PER M.B. 10/22

LINE	DIRECTION	DISTANCE	
E1	S 09°33'21" E	28.70'	
CURVE	RADIUS	LENGTH	DELTA
EC-1	974.02'	127.38'	07°29'34"
EC-2	32.00'	41.98'	75°09'52"



GRAPHIC SCALE



BENCHMARK:

TOP OF B.L.M. BRASS CAP AT THE N.E. CORNER OF
SECTION 3, T. 3 S., R. 27 E., M.D.B. & M..
ELEVATION = 7906.60

CONDOMINIUM PLAN FOR PHASE 7 OF SNOWCREEK V

BEING A SUBDIVISION OF TRACT 36-178, SNOWCREEK V, PHASE 7,
FAIRWAY HOMES II, IN THE TOWN OF MAMMOTH LAKES, COUNTY OF
MONO, STATE OF CALIFORNIA, AS PER MAP RECORDED IN BOOK 12
PAGE 37-39B OF THE COUNTY RECORDER.