

CORNER RECORD

Agency Index

BK 152 PG 6

Document Number CR 16476

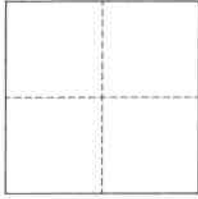
City of Oakland

County of Alameda, California

Brief Legal Description Monument near 6175 Ridgmont Drive

CORNER TYPE

COORDINATES (Optional)



- ☐ Government Corner ☒ Control
☐ Meander ☐ Property
☐ Rancho ☐ Other

Date of Survey January 20, 2023

N. _____ E. _____

Elevation _____

Units ☐ Metric ☐ U.S. Survey Foot

Horizontal Datum _____

Zone _____ Epoch Date _____

Vertical Datum _____

☐ Complies with Public Resources Code §§8801-8819☐ Complies with Public Resources Code §§8890-8902

PLS Act Ref.:

☐ 8765(d)☒ 8771☐ 8773☐ Other:

Corner/

Monument:

☒ Left as found☐ Established☐ Rebuilt☒ Pre-Construction☐ Found and tagged☐ Reestablished☒ Referenced☐ Post-Construction

Narrative of corner identified and monument as found, set, reset, replaced, or removed:

☒ See sheet #2 for description(s):

This Corner Record is being filed to reference the position of an existing monument, prior to a sanitary sewer rehabilitation project. This document is for preservation purposes only, and no attempt was made to determine the relationship to property, centerline, or right-of-way lines.

SURVEYOR'S STATEMENT

This Corner Record was prepared by me or under my direction in conformance with

the Professional Land Surveyors' Act on March 9, 2023

Signed

P.L.S. or R.C.E. No. 8040



COUNTY SURVEYOR'S STATEMENT

This Corner Record was received

and examined and filed

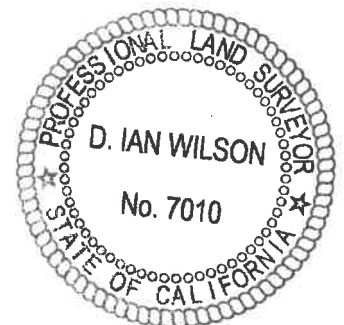
MAR 30 2023

Signed

P.L.S. or R.C.E. No. 7010

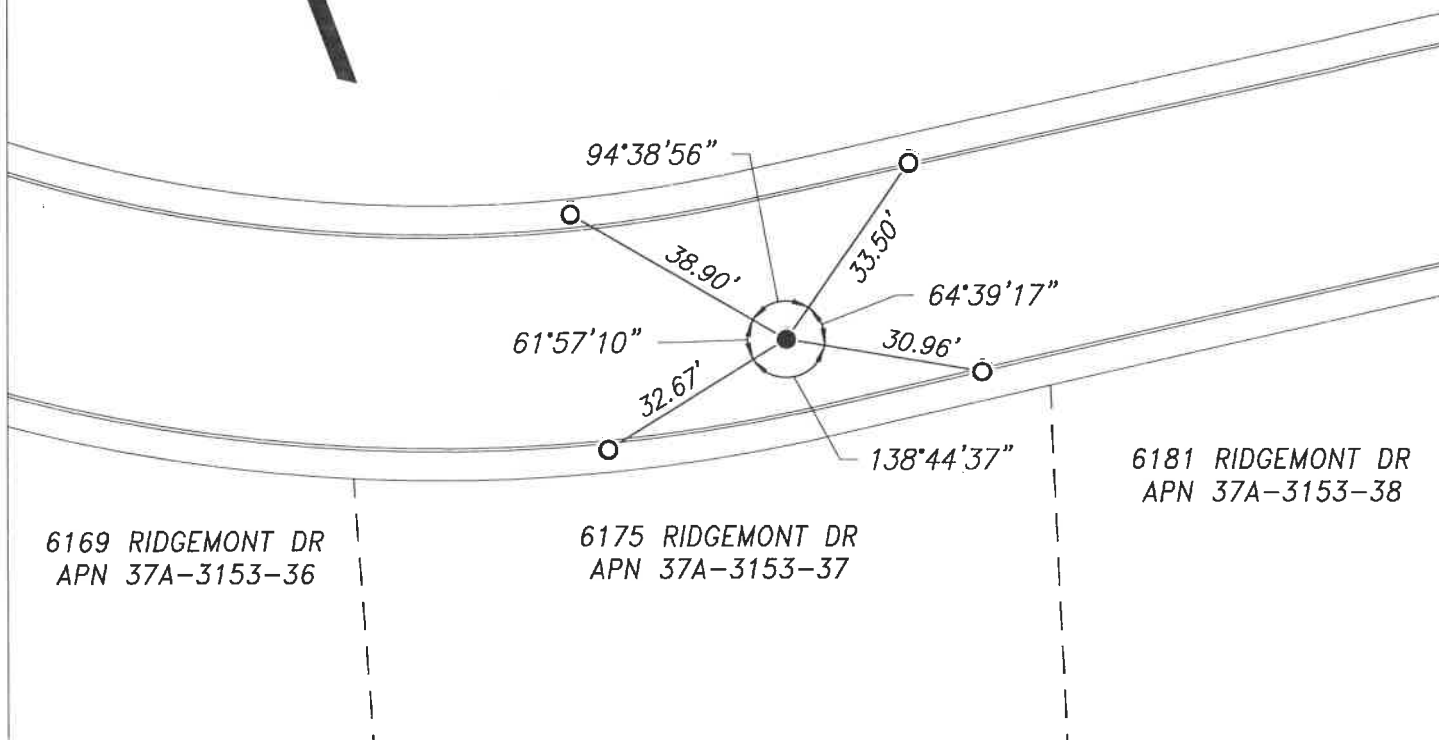
Title ALAMEDA COUNTY SURVEYOR

County Surveyor's Comment



SCALE 1" = 30'

APN 37A-3153-40



REFERENCE

(A) TRACT 3393 IN THE CITY OF OAKLAND, FILED ON OCTOBER 29, 1981, IN BOOK 130 OF TRACT MAPS, AT PAGES 33-52, ALAMEDA COUNTY RECORDS.

LEGEND

- FOUND MONUMENT, 2-1/2" BRASS DISK, WITH PUNCH, STAMPED "RE 9788"
- CUT CROSS IN CONCRETE AS REFERENCE POINT

NOTES

1. ALL REFERENCES ARE ALAMEDA COUNTY RECORDS