

★ **USE WITH CAUTION** ★  
 THIS IS A PUBLIC WORKS DEPARTMENT  
 WORKING COPY OF AN OFFICIAL MAP  
 ON FILE IN THE OFFICE OF THE COUNTY  
 RECORDER, COUNTY OF ALAMEDA. OF  
 RECORD INFORMATION OR CALCULATIONS  
 MAY HAVE BEEN ADDED HEREON.

SCALE 1" = 40'

**LEGEND**

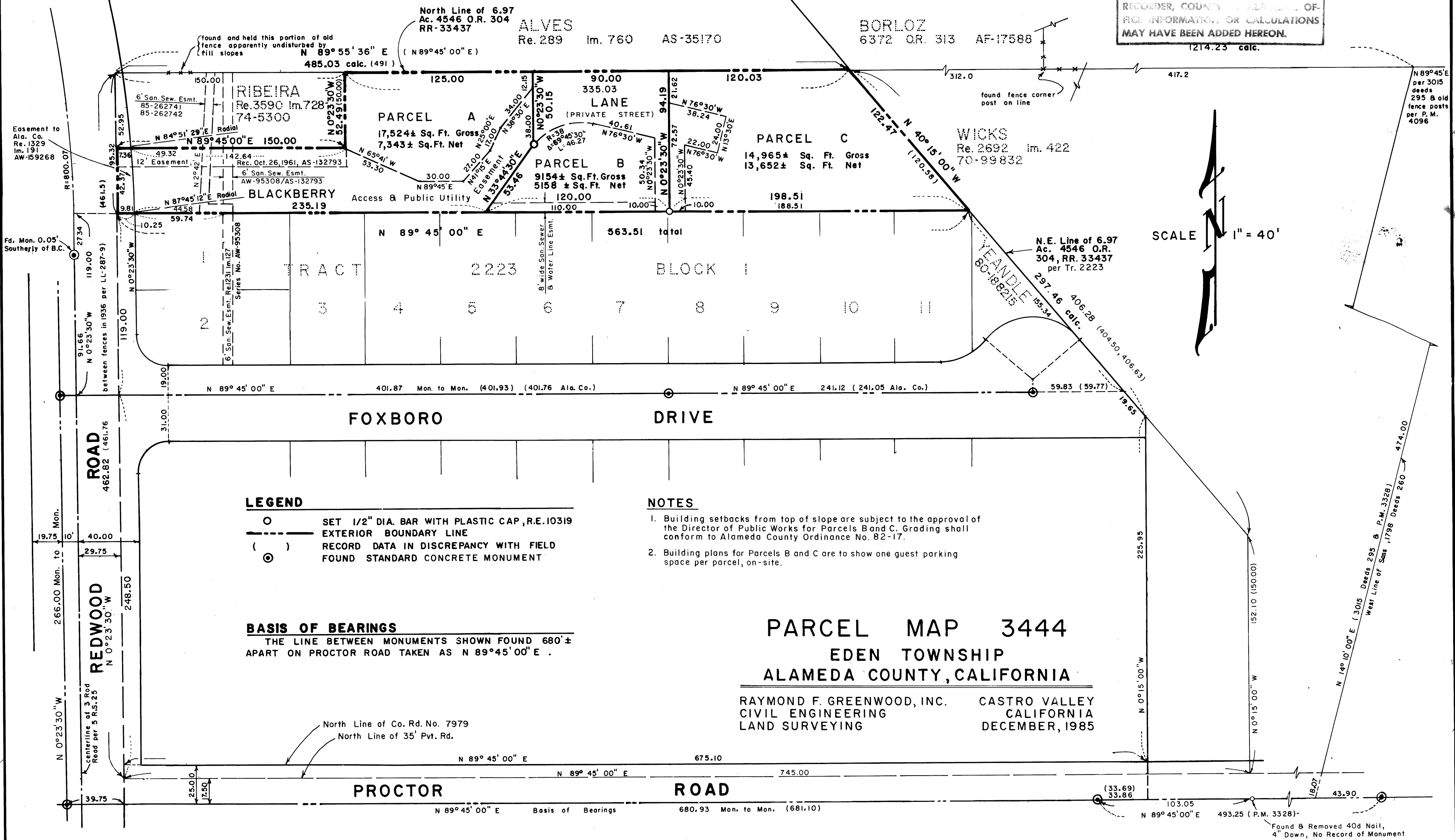
- SET 1/2" DIA. BAR WITH PLASTIC CAP, R.E. 10319
- EXTERIOR BOUNDARY LINE
- ( ) RECORD DATA IN DISCREPANCY WITH FIELD
- ⊙ FOUND STANDARD CONCRETE MONUMENT

**BASIS OF BEARINGS**  
 THE LINE BETWEEN MONUMENTS SHOWN FOUND 680' ±  
 APART ON PROCTOR ROAD TAKEN AS N 89° 45' 00" E.

**NOTES**

1. Building setbacks from top of slope are subject to the approval of the Director of Public Works for Parcels B and C. Grading shall conform to Alameda County Ordinance No. 82-17.
2. Building plans for Parcels B and C are to show one guest parking space per parcel, on-site.

**PARCEL MAP 3444**  
**EDEN TOWNSHIP**  
**ALAMEDA COUNTY, CALIFORNIA**  
 RAYMOND F. GREENWOOD, INC. CASTRO VALLEY  
 CIVIL ENGINEERING CALIFORNIA  
 LAND SURVEYING DECEMBER, 1985



Series # 86-057395

SHEET 2 OF 2  
 JOB NO. 85-H-04

filed 3-10-86 159/51

PM 3444

MAP BK 159 PG 57