

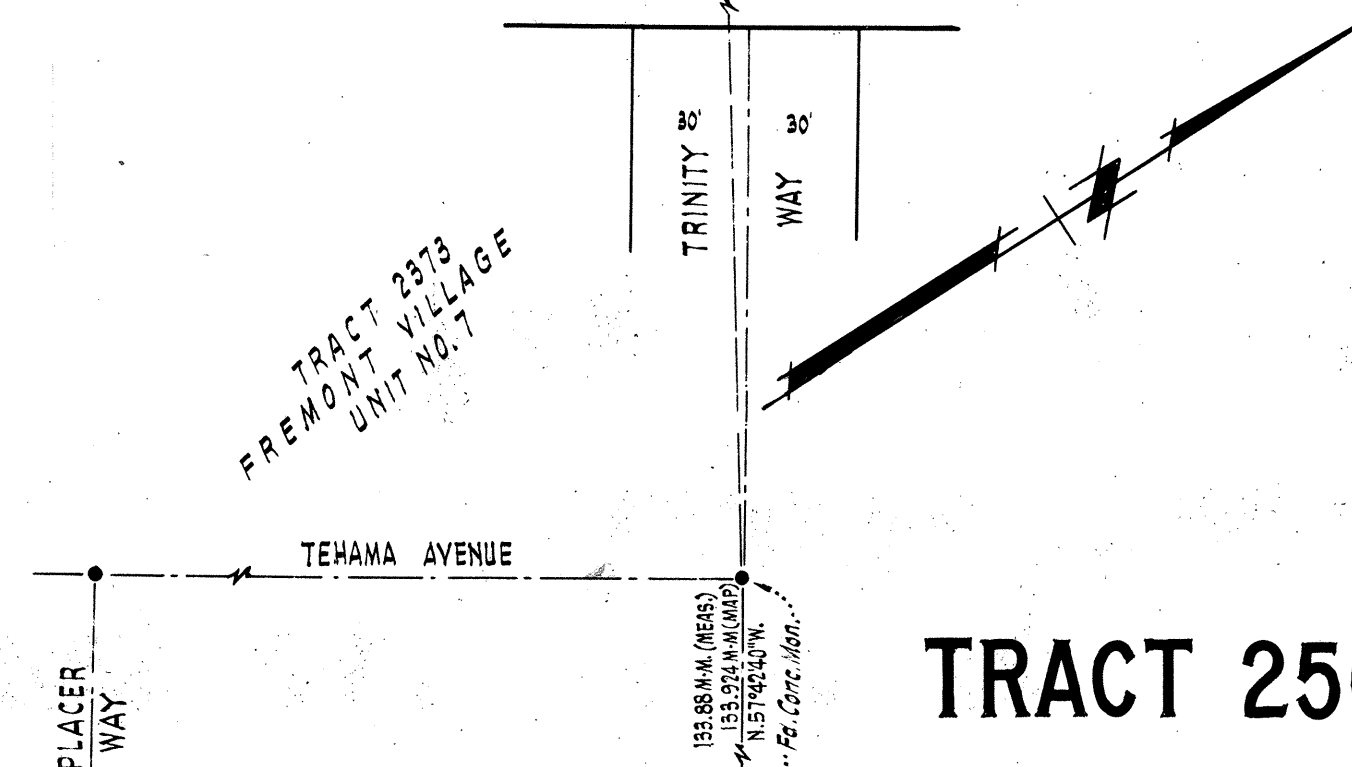
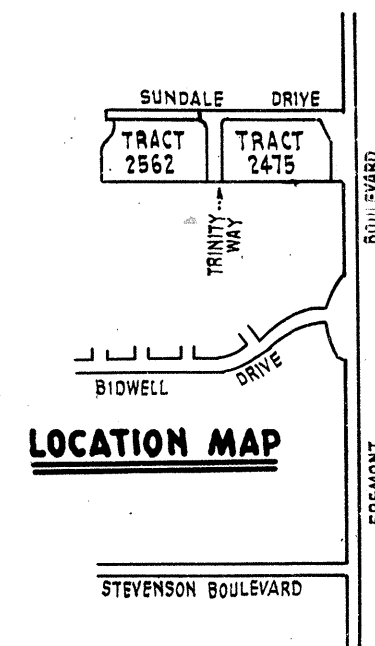
**LEGEND**

Existing monuments are shown thus: —●—  
 Concrete monuments with cast iron frame  
 and cover to be installed are shown thus: —○—  
 Public utility easements are designated thus: —P.U.E.—  
 Building set-back lines are shown thus: —B.S.B.L.—  
 Storm drain easements are designated thus: —S.D.E.—

**BASIS OF BEARINGS**

The bearing, N. 57°42'40"W., of Trinity Way, as shown on  
 "Tract 2373 Fremont Village Unit No. 7", recorded Sept. 6, 1962, in  
 Book 45 at pages 65 and 66, Alameda County Records, was  
 taken as the basis of bearings shown on this map.

**LOCATION MAP**



**TRACT 2562**

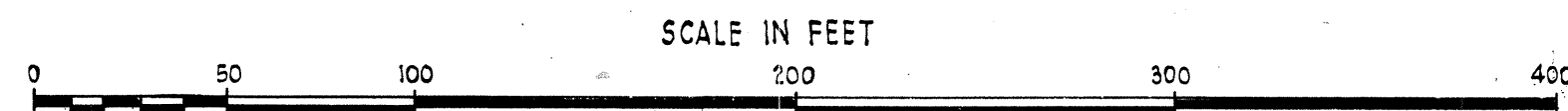
CITY OF FREMONT, ALAMEDA COUNTY,  
 CALIFORNIA.

**PACIFIC ENGINEERS**

PALO ALTO, CALIFORNIA.

JULY, 1964.

SCALE: 1" = 50'



SHEET NO. 3 OF 3 SHEETS

TR.  
 2562