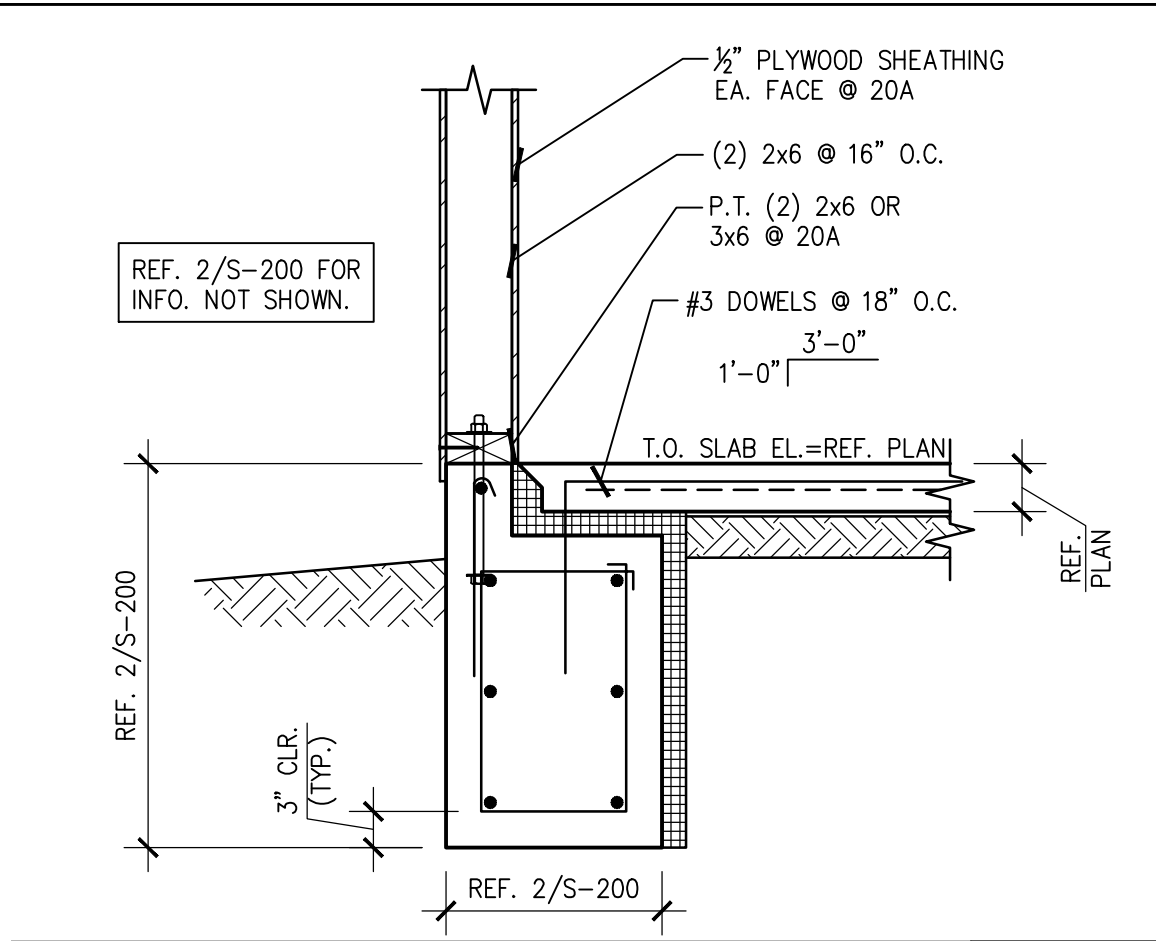
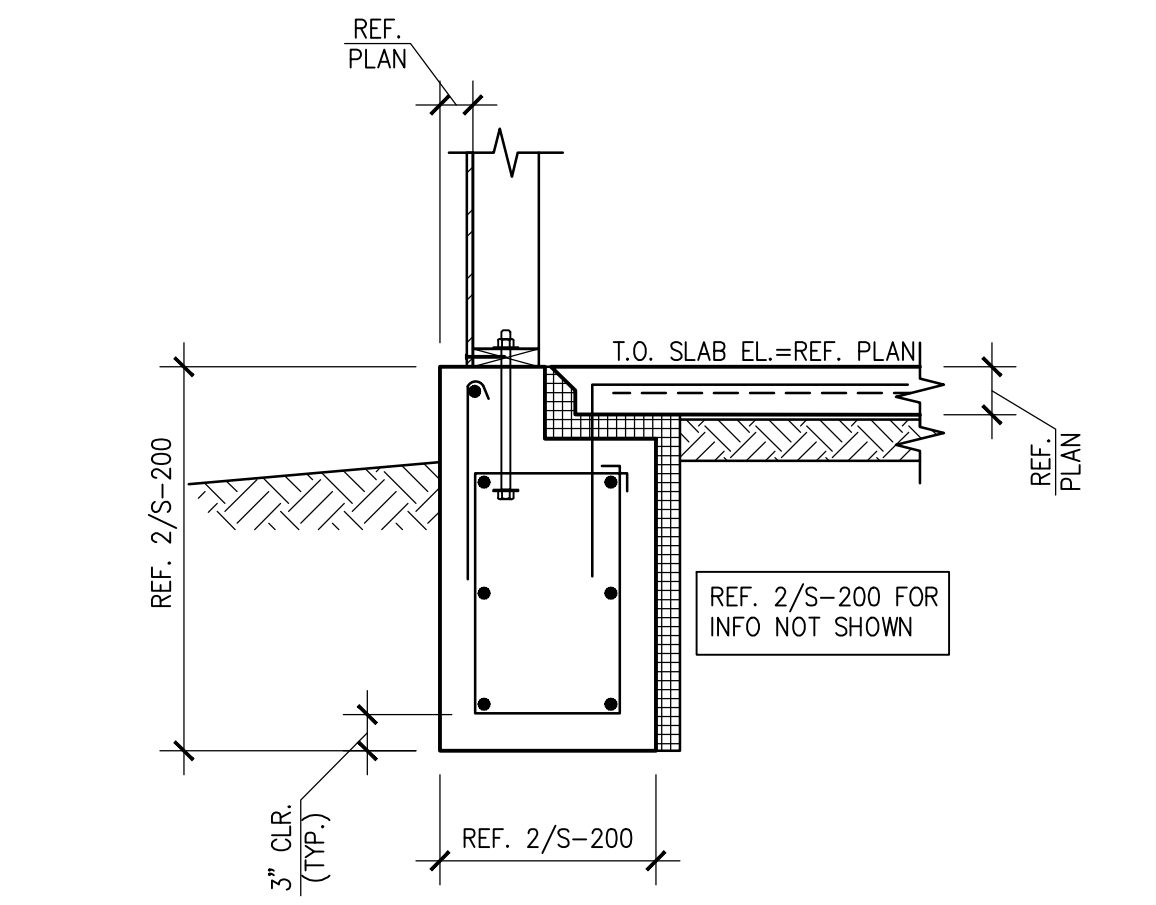


X:\PROJECTS\22498 Panda Express Clarksville, TN\CADD\STRUCT\22498-200_Foundation Details.dwg, 1/24/2023 3:37:04 PM, crobbers, DWG To PDF v3.1.1



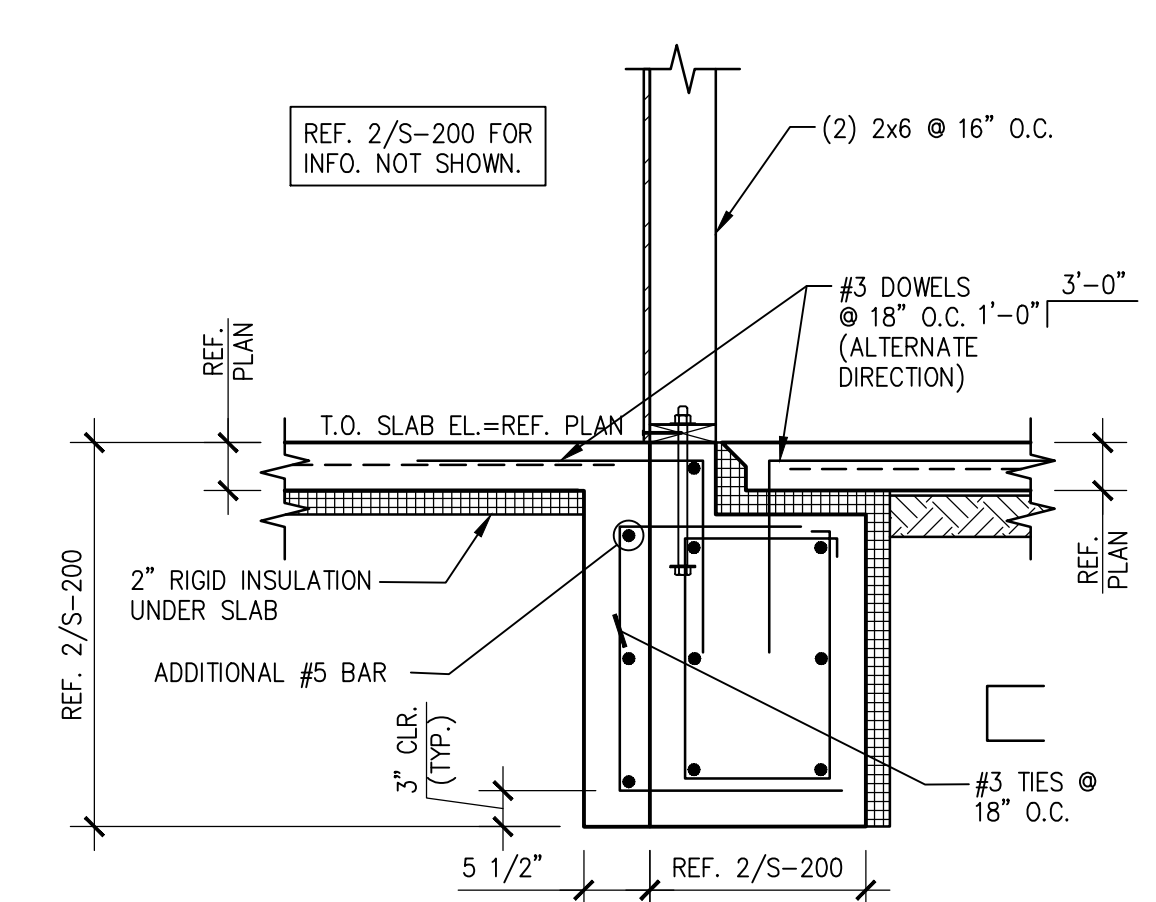
SECTION 20,20A

SCALE: 3/4"=1'-0" S-200



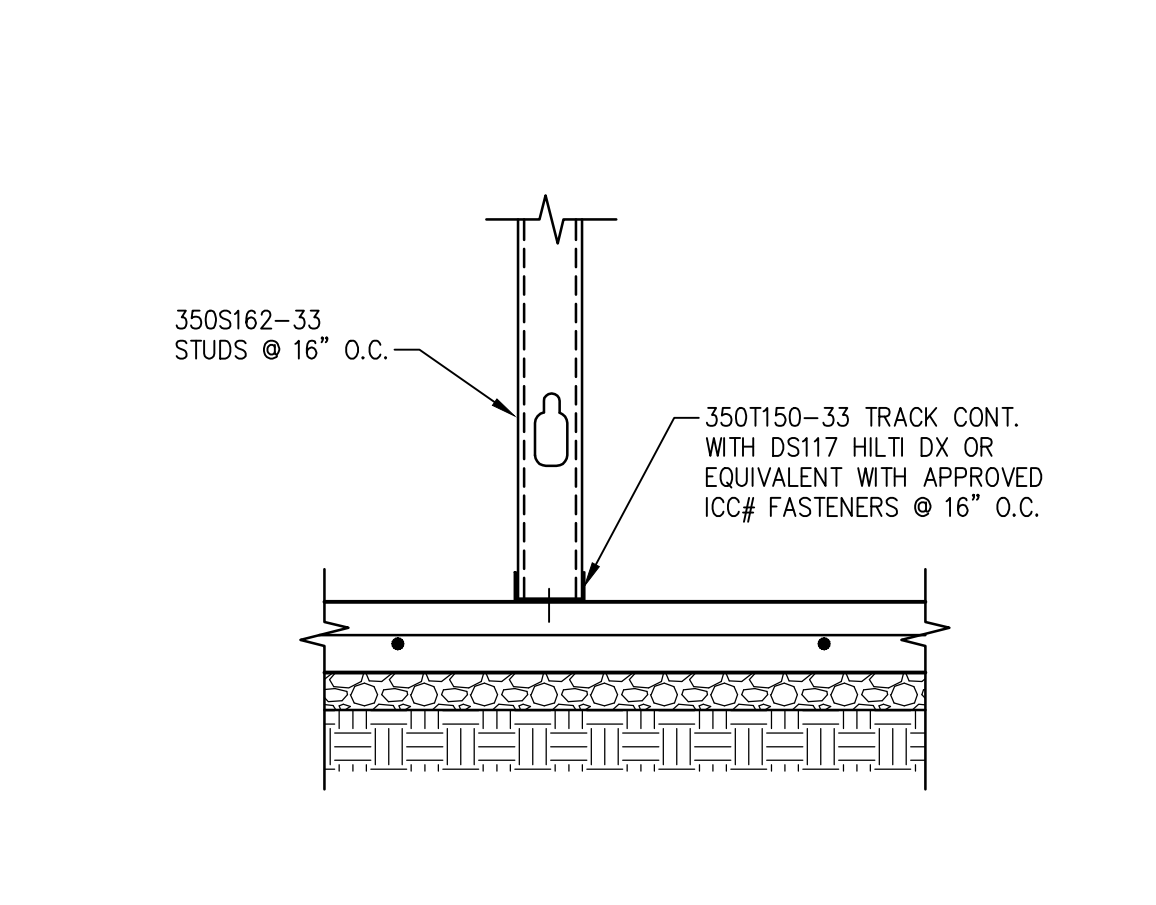
SECTION 19

SCALE: 3/4"=1'-0" S-200



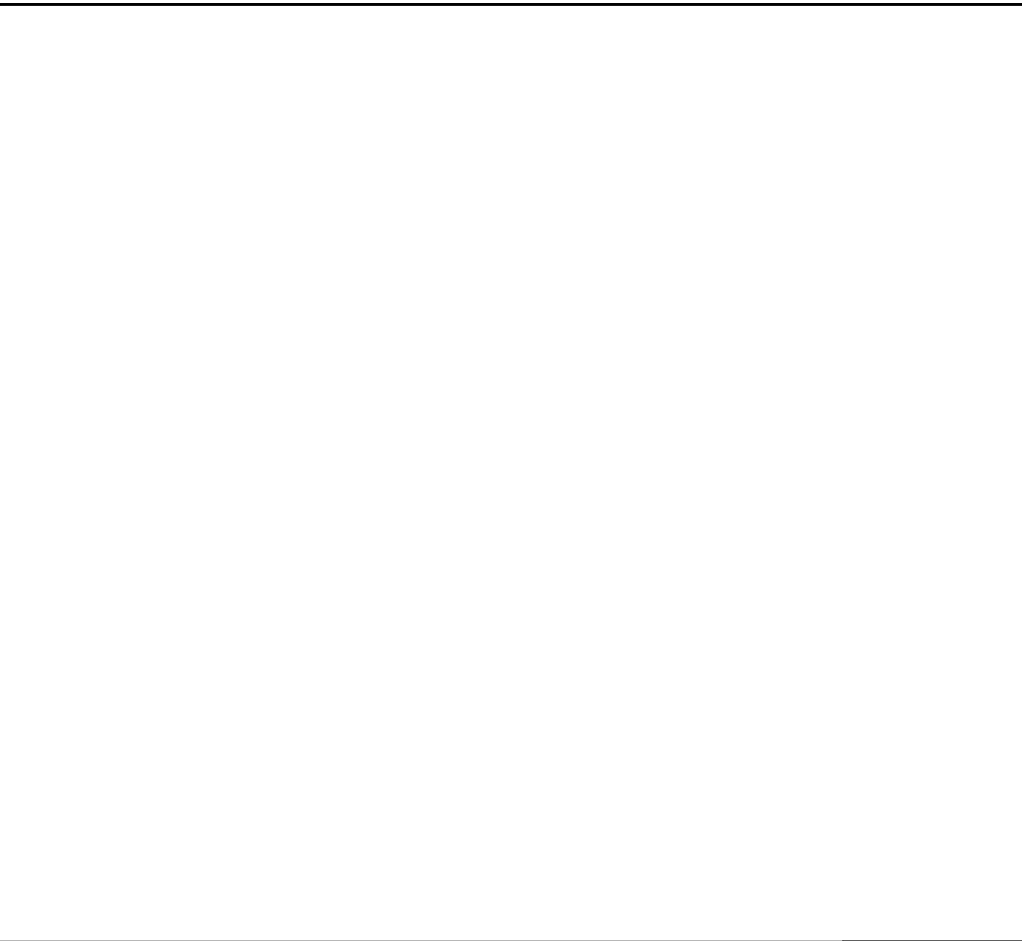
SECTION 18

SCALE: 3/4"=1'-0" S-200



SLAB AT NON BEARING WALL 17

SCALE: N.T.S. S-200



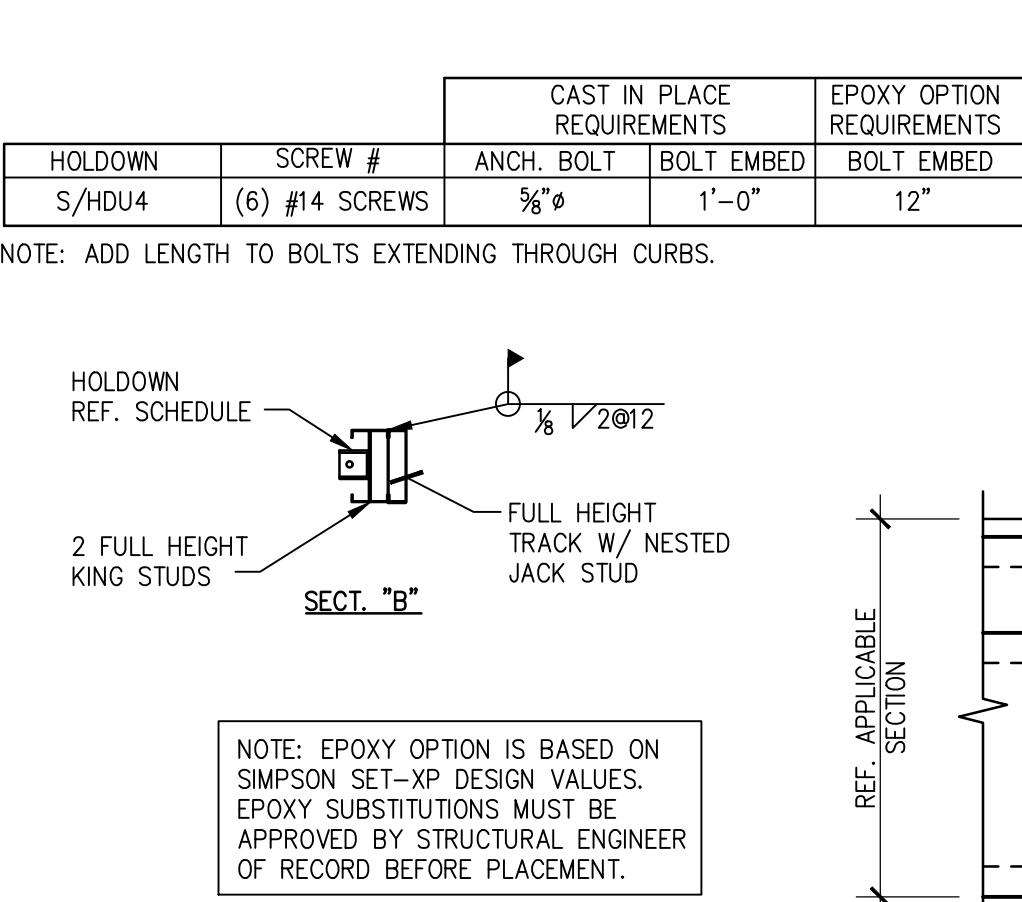
NOT USED 16

SCALE: 3/4"=1'-0" S-200



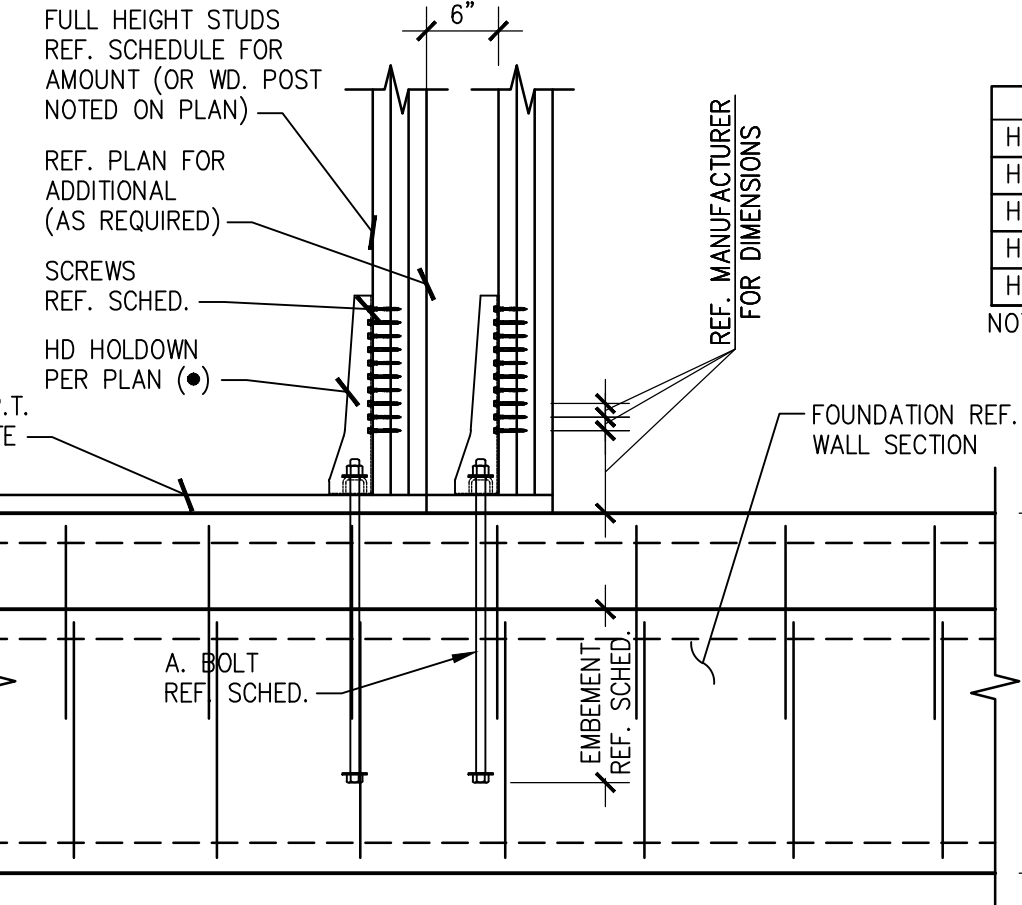
NOT USED 15

SCALE: 3/4"=1'-0" S-200



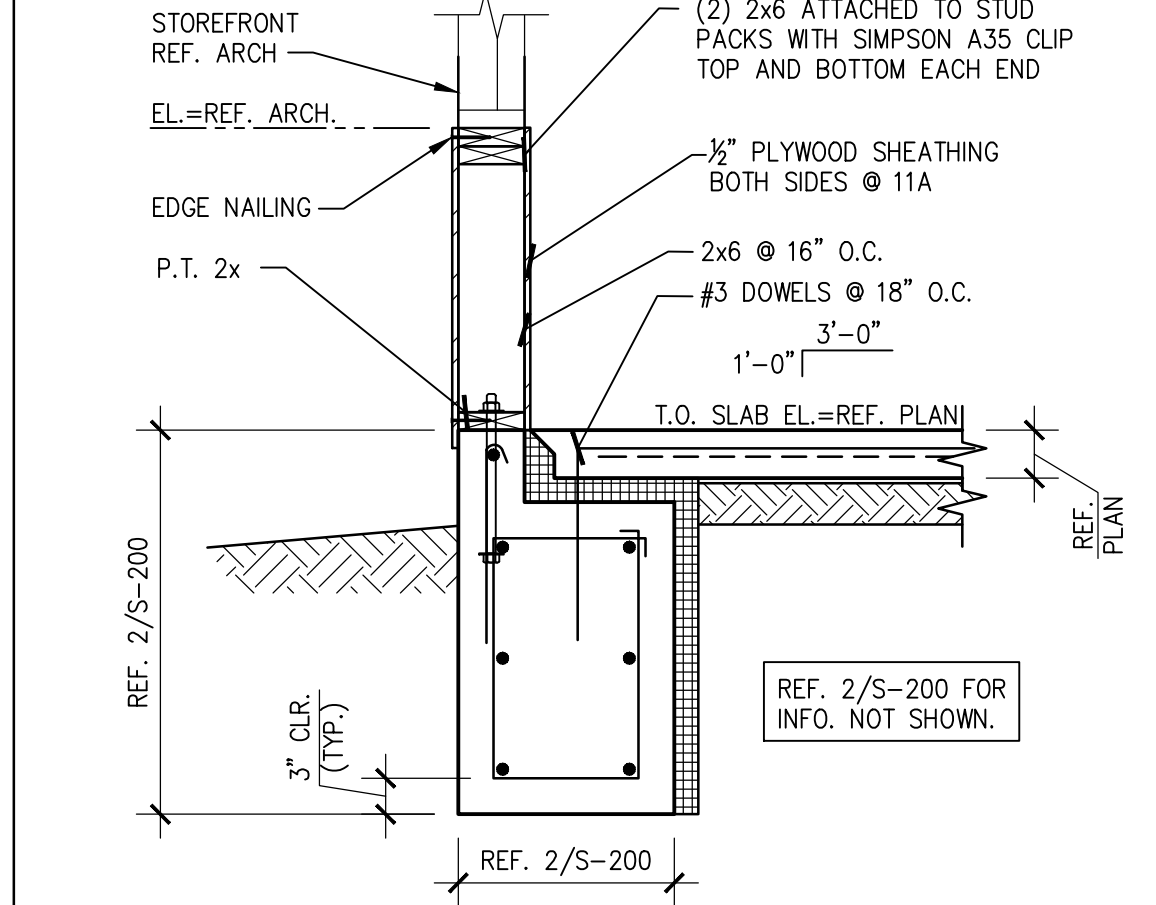
TYPICAL HOLDOWN DETAIL- LIGHT GAGE 10

SCALE: 3/4"=1'-0" S-200



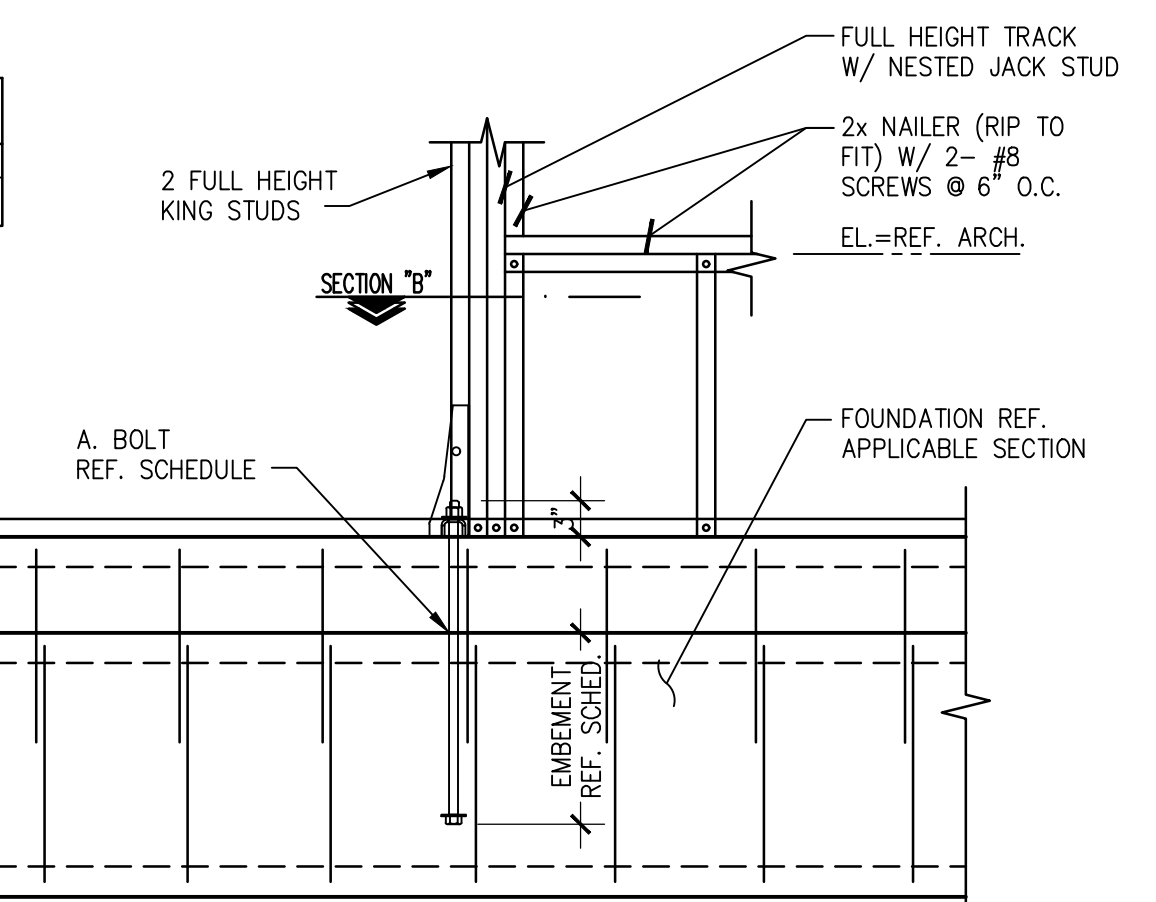
TYPICAL HOLDOWN DETAIL- WOOD 9

SCALE: N.T.S. S-200



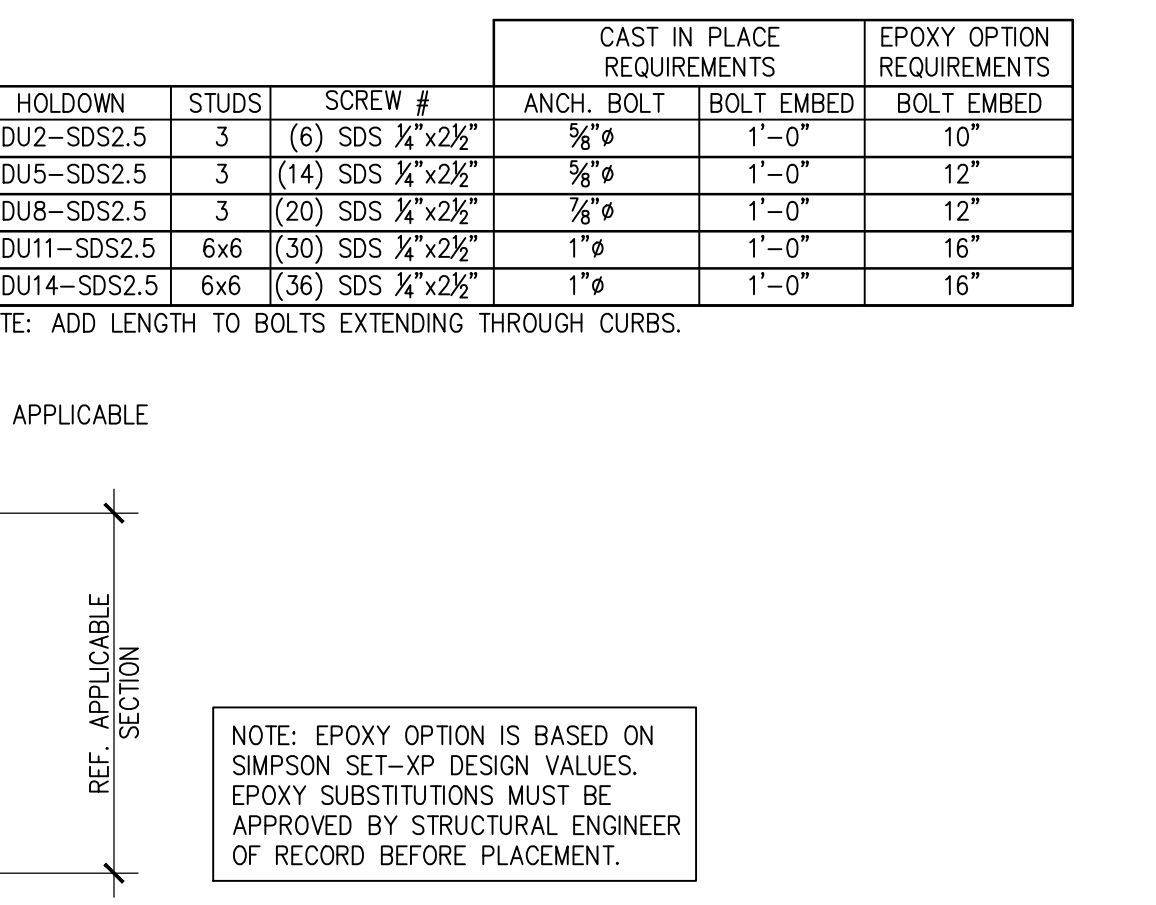
NOT USED 12

SCALE: 3/4"=1'-0" S-200



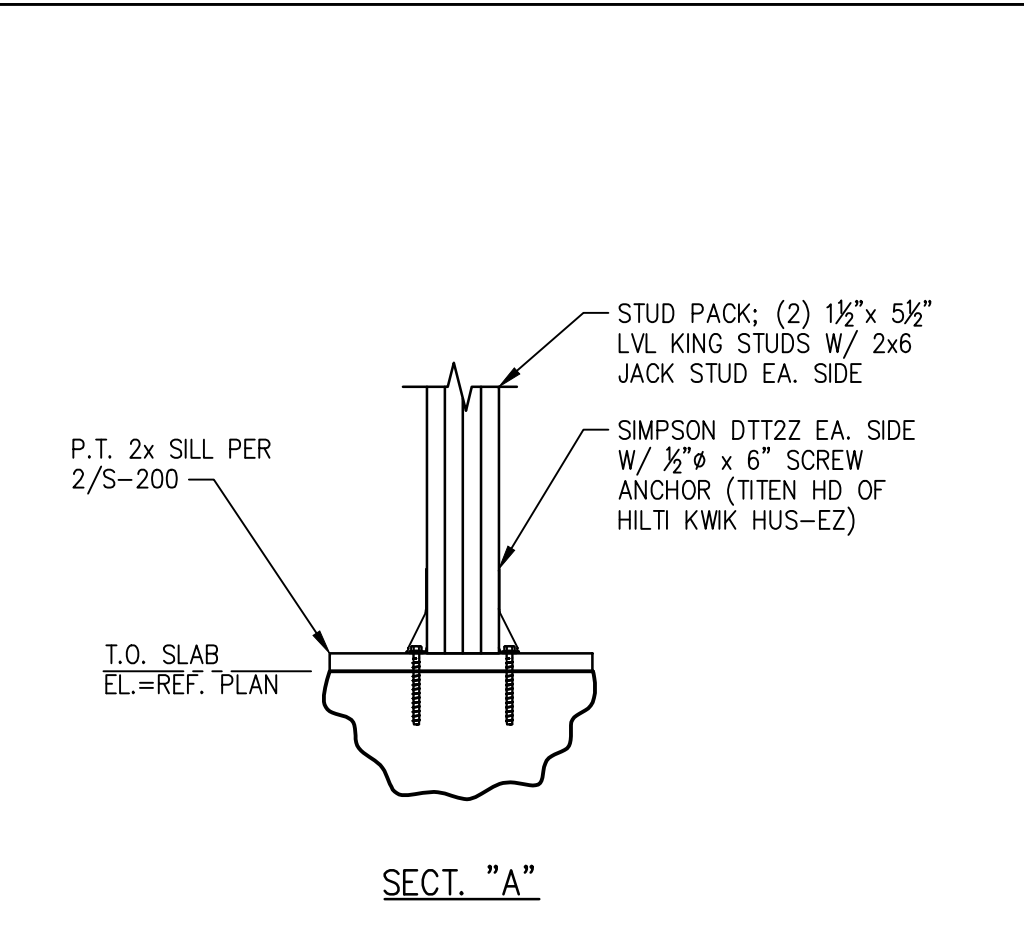
NOT USED 11, 11A

SCALE: 3/4"=1'-0" S-200



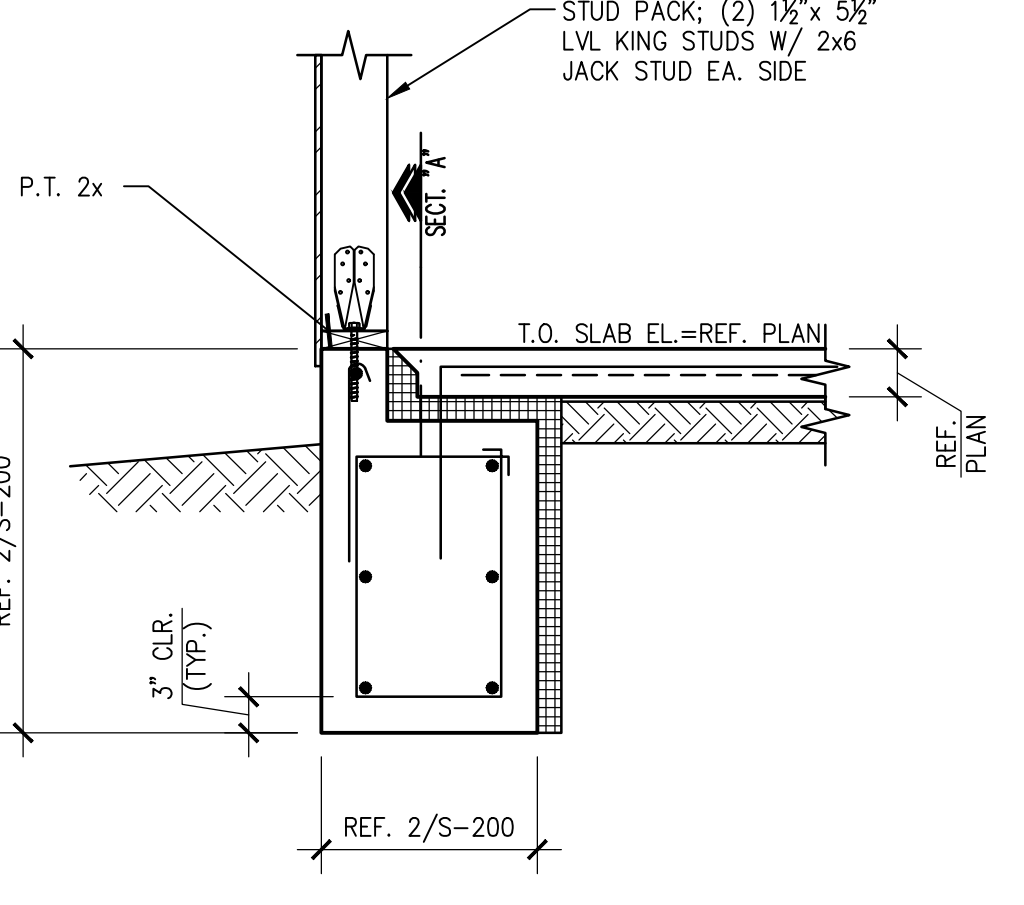
NOT USED 11, 11A

SCALE: 3/4"=1'-0" S-200



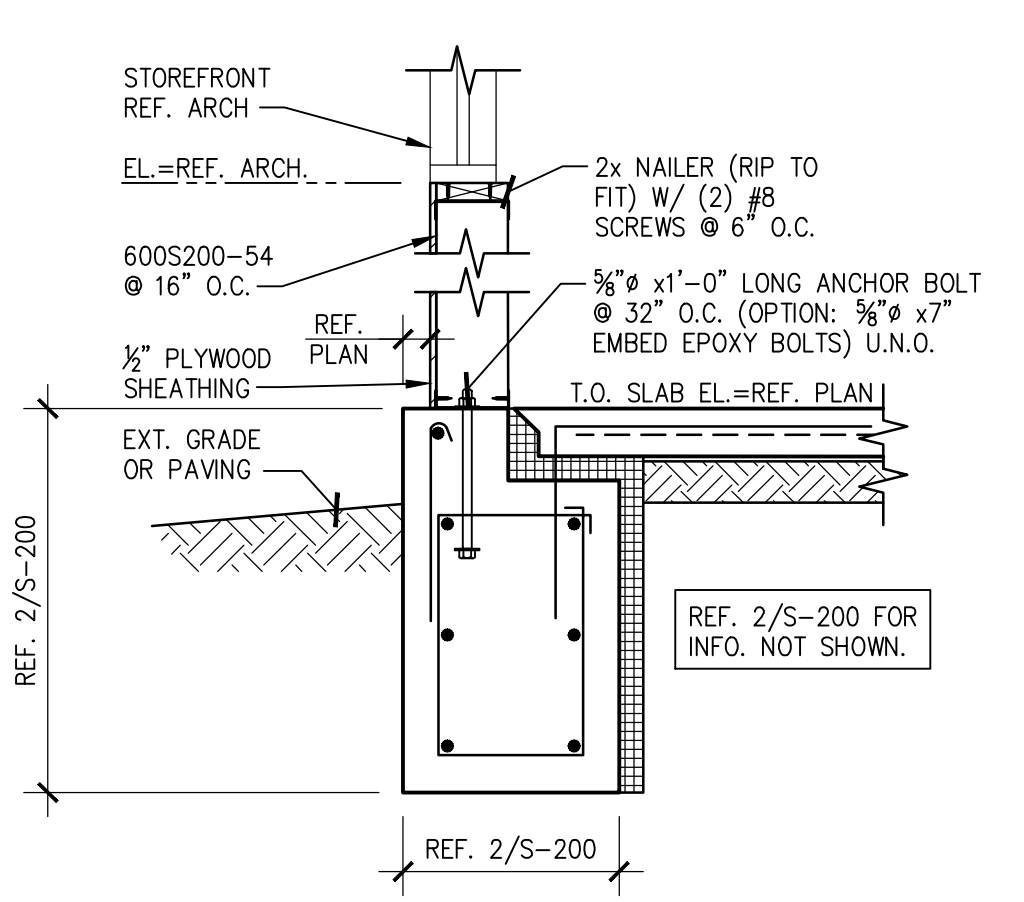
SECTION A

SCALE: 3/4"=1'-0" S-200



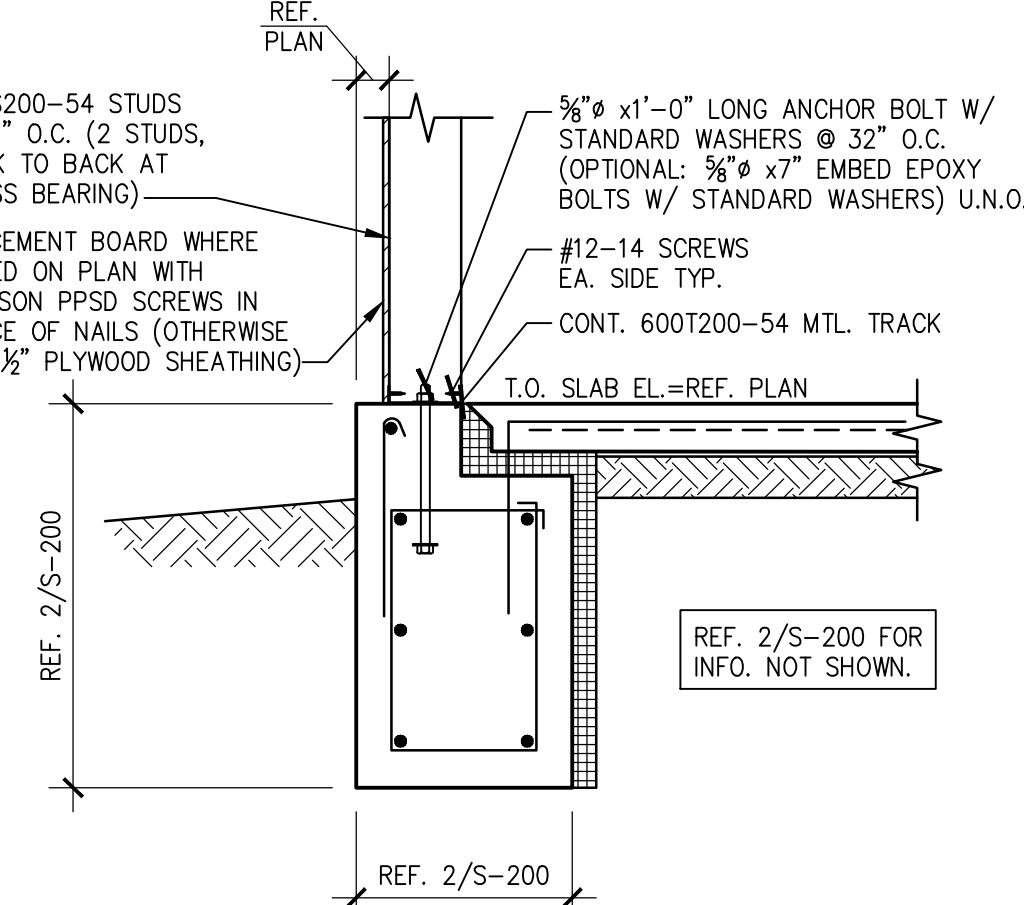
SECTION 7

SCALE: 3/4"=1'-0" S-200



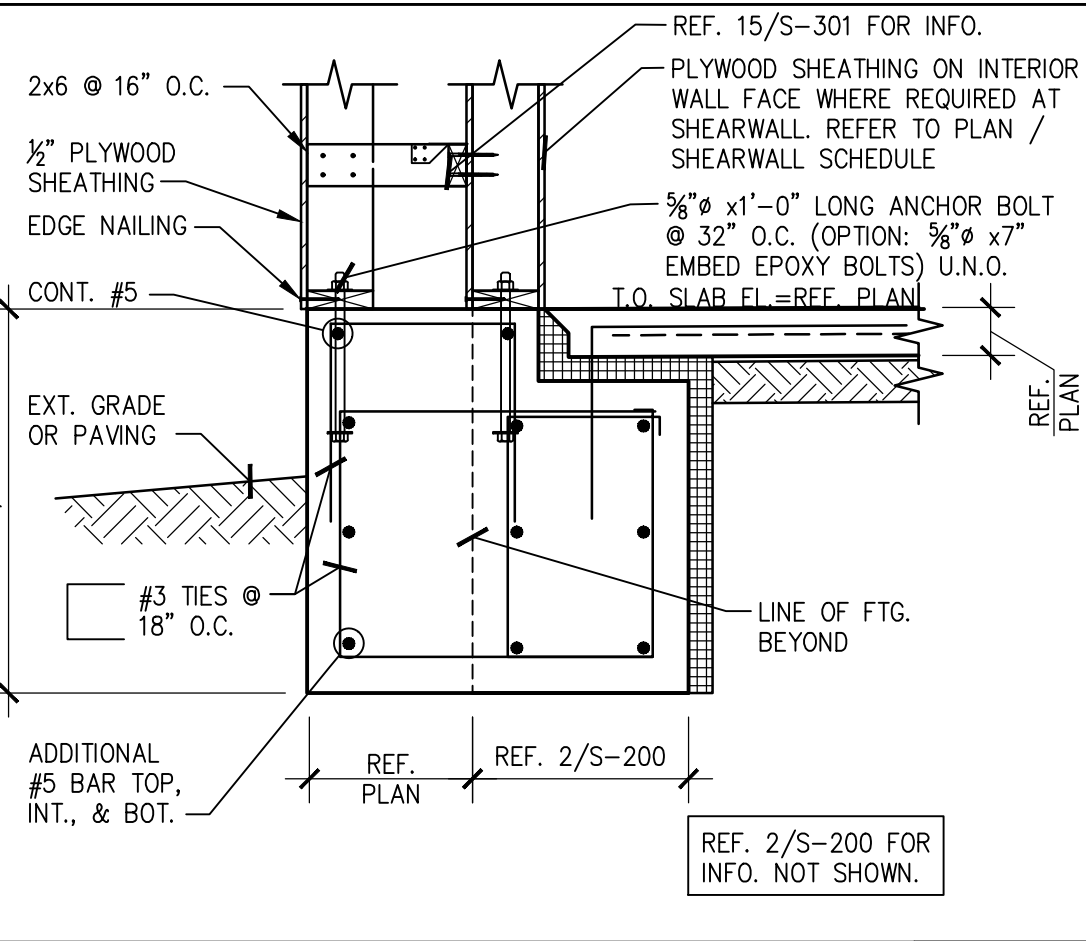
SECTION 6

SCALE: 3/4"=1'-0" S-200



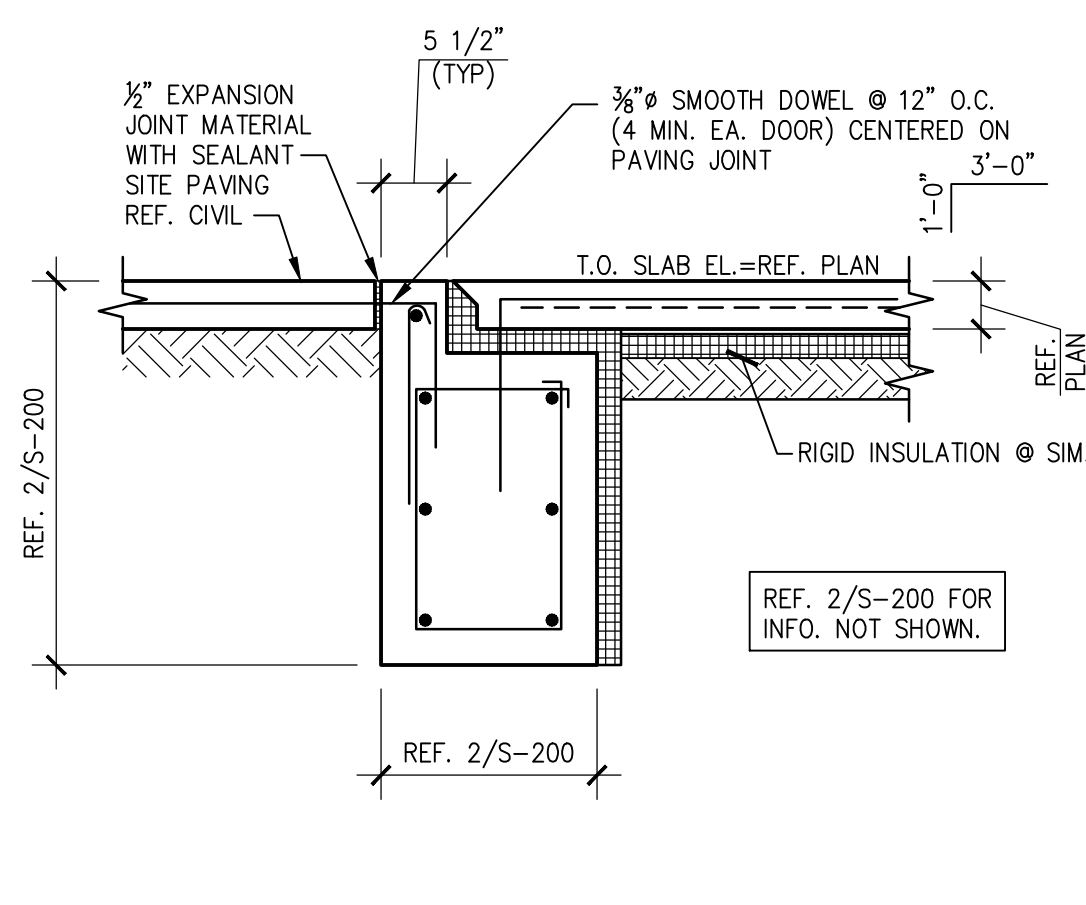
SECTION 5

SCALE: 3/4"=1'-0" S-200



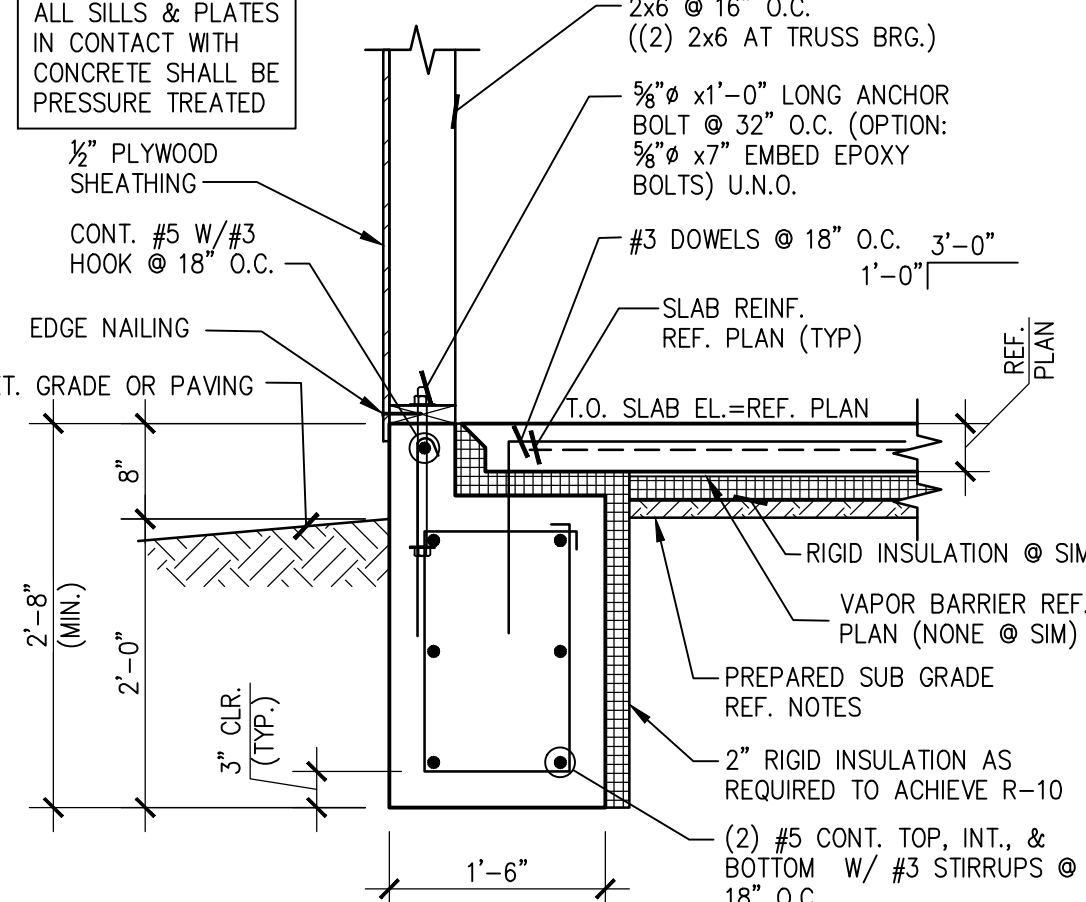
SECTION 4

SCALE: 3/4"=1'-0" S-200



SECTION 3

SCALE: 3/4"=1'-0" S-200



SECTION 2

SCALE: 3/4"=1'-0" S-200



SECTION 1

SCALE: 3/4"=1'-0" S-200



PANDA EXPRESS, INC.
1683 Walnut Grove Ave.
Rosemead, California
91770
Telephone: 626.799.9898
Facsimile: 626.372.8288

All ideas, designs, arrangement and plans indicated or represented by this drawing are the property of Panda Express Inc. and were created for use on this specific project. None of these ideas, designs, arrangements or plans may be used by or disclosed to any person, firm, or corporation without the written permission of Panda Express Inc.

REVISIONS:

ISSUE DATE:

ISSUE FOR PERMIT	10-20-22
ISSUE FOR BID	01-30-23

DRAWN BY: AE/SS

PANDA PROJECT #: D23503
PANDA STORE #: -
ARCH PROJECT #: 261-443



Ronald A. Roberts
Associates, Inc.
Consulting Engineers
2948 N. Stemmons Freeway
Dallas, Texas 75247-6103
Phone: (214) 657-6269
www.rara.net

PANDA EXPRESS
PANDA HOME 2600
NORTH RIVERSIDE DR & 2ND ST.
CLARKSVILLE, TN 37040

S-200

FOUNDATION DETAILS

PANDA HOME 2600 R4

ISSUE FOR BID 01-30-2023