

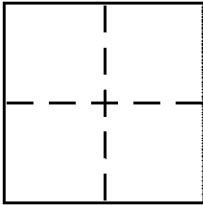
Bk 39 Pg 77

CORNER RECORD

Document Number CR 4386
County of ALAMEDA, California

City of BERKELEY

Brief Legal Description CITY MONUMENT B3164



CORNER TYPE

Government Corner ☐ Control ☒
Meander ☐ Property ☐
Rancho ☐ Other ☐
Date of Survey 11-01-2010

COORDINATES (Optional)

N. _____
E. _____
Zone _____ NAD27 ☐ NAD83 ☐
NAD83 Epoch _____
Elev. _____
Vert. Datum: NGVD29 ☐ NAVD88 ☐
Meas. Units: Metric ☐ Imperial ☐

Corner – Left as found ☒ Found and tagged ☐ Established ☐ Reestablished ☐ Rebuilt ☐

Identification and type of corner found: Evidence used to identify or procedure used to establish or reestablish the corner:

FOUND CITY MONUMENT

In compliance with Section 8771 of the Professional Land Surveyors' Act, this corner record is being filed to ESTABLISH the position of an existing monument PRIOR to street or highway construction.

A description of the physical condition of the monument as found and as set or reset:

SET CROSS AS REFERENCE POINT
SET 5/8" REBAR WITH PUNCH AS REFERENCE PT.

SURVEYOR'S STATEMENT

This Corner Record was prepared by me or under my direction in conformance with

the Land Surveyor's Act on DEC. 3 2010

Signed Robert J. Brunel P.L.S. or P.C.E. No. 4961

COUNTY SURVEYOR'S STATEMENT

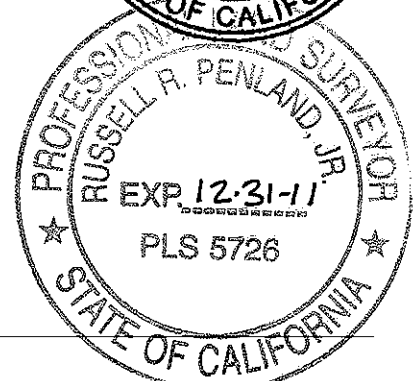
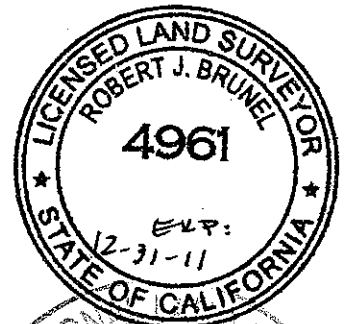
This Corner Record was received 12-10-10

and examined and filed 3-22-11

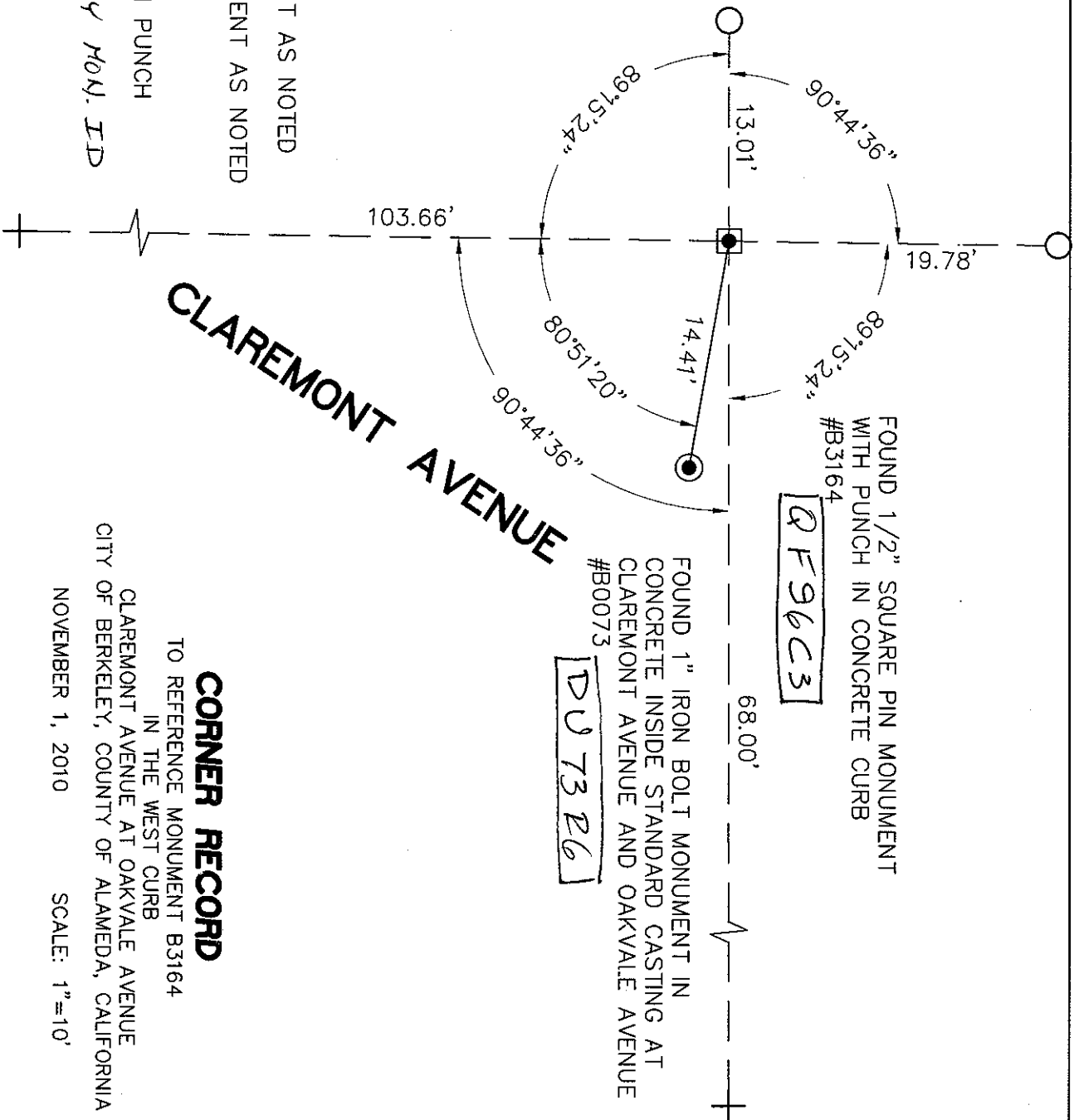
Signed Russell R. Penland, Jr. P.L.S. or P.C.E. No. 5726

Title COUNTY SURVEYOR

County Surveyor's Comment _____



GF9603



LEGEND

- FOUND CITY MONUMENT AS NOTED
- ◻ FOUND EBMUD MONUMENT AS NOTED
- ⊕ SET CROSS
- SET 5/8" REBAR WITH PUNCH
- #### ALAMEDA COUNTY MON. ID

CLAREMONT AVENUE

CORNER RECORD

TO REFERENCE MONUMENT B3164
IN THE WEST CURB
CLAREMONT AVENUE AT OAKVALE AVENUE
CITY OF BERKELEY, COUNTY OF ALAMEDA, CALIFORNIA
NOVEMBER 1, 2010
SCALE: 1"=10'