

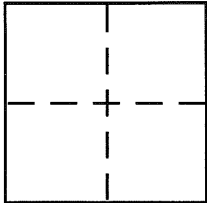
BK 15 pg 99

CORNER RECORD

City of Berkeley

Document Number CR 1829
County of Alameda, California

Brief Legal Description The Alameda



CORNER TYPE

Government Corner ☐ Control ☐
Meander ☐ Property ☐
Rancho ☐ Other ☒
Date of Survey 11/21/02

COORDINATES (Optional)

N. _____
E. _____
Zone _____ NAD27 ☐ NAD83 ☐
NAD83 Epoch _____
Elev. _____
Vert. Datum: NGVD29 ☐ NAVD88 ☐
Meas. Units: Metric ☐ Imperial ☐

Corner - Left as found ☐ Found and tagged ☐ Established ☐ Reestablished ☐ Rebuilt ☒

Identification and type of corner found: Evidence used to identify or procedure used to establish or reestablish the corner:

Standard City of Berkeley street monument on The Alameda approximately 155' north
of the intersection of The Alameda and Menlo Place.

The monument was referenced using local ties. See reverse.

A description of the physical condition of the monument as found and as set or reset:

Monument well with 2" City of Berkeley brass disc was set.

SURVEYOR'S STATEMENT

This Corner Record was prepared by me or under my direction in conformance with
the Land Surveyor's Act on November 22, 2002

Signed [Signature] P.L.S or R.C.E. No. L.S. 6884

COUNTY SURVEYOR'S STATEMENT

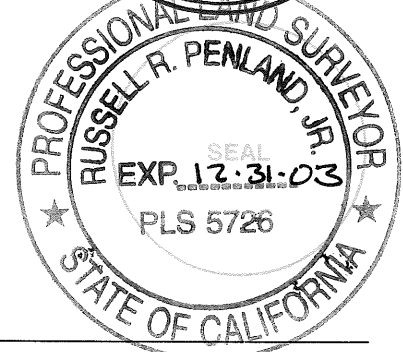
This Corner Record was received 01-03-03

and examined and filed 9-17-03

Signed [Signature] P.L.S or R.C.E. No. 5726

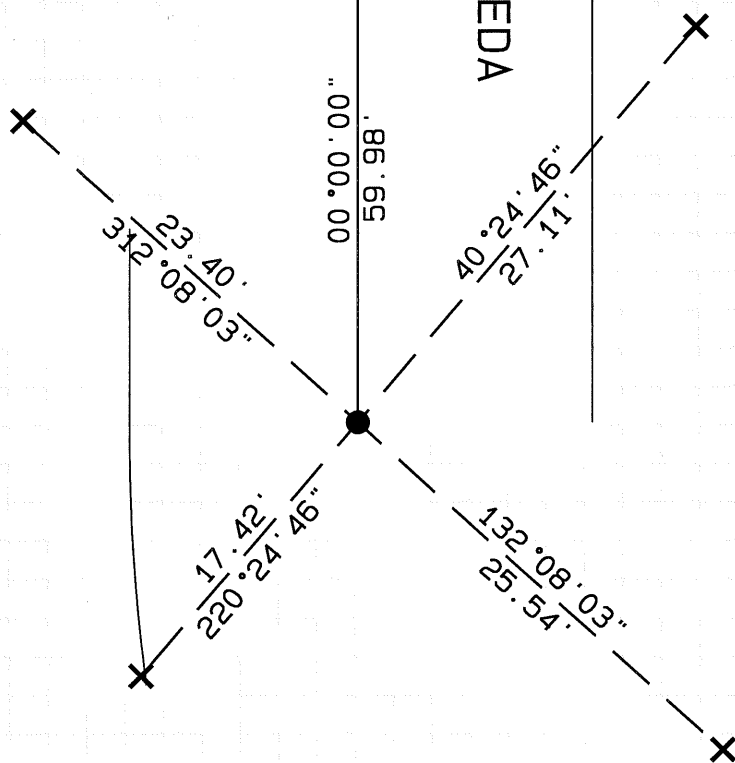
Title County Surveyor

County Surveyor's Comment _____



MENLO
PLACE

THE
ALAMEDA



● 2" CITY OF BERKELEY BRASS DISC

× SCRIBED CROSS ON CURB

SCALE: 1" = 10'