

PATENT NUMBERS

EXHAUST HOODS ND-2/BD-2/SND-2 (CANADA) - CA PATENT 2520435 C.

HOOD INFORMATION - JOB#5986683																				
HOOD NO	TAG	MODEL	MANUFACTURER	LENGTH	MAX COOKING TEMP	TYPE	APPLIANCE DUTY	DESIGN CFM/FT	TOTAL EXH CFM	EXHAUST PLENUM (RISER'S)						TOTAL SUPPLY CFM	HOOD CONSTRUCTION	HOOD CONFIG		
										WIDTH	LENG	HEIGHT	DIA	CFM	VEL			SP	END TO	ROW
1		4824 ND-2	CAPTIVEAIRE	13' 0"	600 DEG	I	HEAVY	262	3400			4'	18"	3400	1924	-1.202"	0	430 SS WHERE EXPOSED	LEFT	ALONE
2		4824 ND-2	CAPTIVEAIRE	11' 2"	600 DEG	I	HEAVY	260	2900			4'	18"	2900	1641	-0.897"	0	430 SS WHERE EXPOSED	RIGHT	ALONE
3	MISC	226 ACPSP-ONLY	CAPTIVEAIRE	11' 9"	300 DEG	I	N/A	0	0								2520	430 SS WHERE EXPOSED	ALONE	ALONE
4	MISC	226 ACPSP-ONLY	CAPTIVEAIRE	14' 4"	300 DEG	I	N/A	0	0								2520	430 SS WHERE EXPOSED	ALONE	ALONE

[illegible]

HOOD OPTIONS		
HOOD NO	TAG	OPTION
1		LEFT END STANDOFF (FINISHED) 3' WIDE 48' LONG. RISER SENSOR INSTALL 6IN PLEN.
2		RISER SENSOR INSTALL 6IN PLEN.

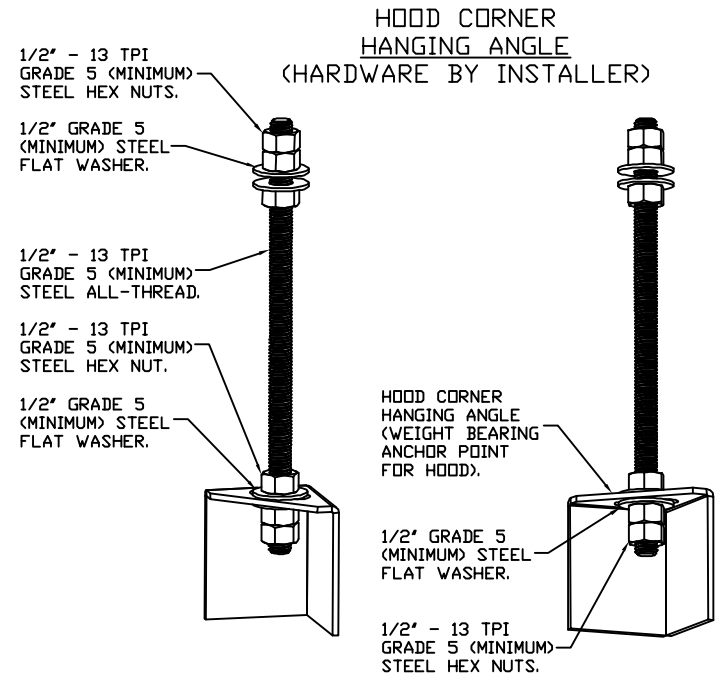
PERFORATED SUPPLY PLENUM(S)							RISER(S)				
HOOD NO	TAG	POS	LENGTH	WIDTH	HEIGHT	TYPE	WIDTH	LENG	DIA	CFM	SP
3	Front	141'	10'	6'	AC			8"	236	0.135'	
					AC			8"	236	0.135'	
	Back	141'	12'	6'	MUA	10"	28"	1260	0.530'		
					MUA	10"	28"	1260	0.530'		
4	Front	172'	10'	6'	AC			8"	236	0.122'	
					AC			8"	236	0.122'	
	Back	172'	12'	6'	MUA	10"	28"	1254	0.497'		
					MUA	10"	28"	1254	0.497'		

WALL-MOUNT UTILITY CABINET							
UTILITY CABINET(S)							
HOOD NO	LOCATION	SIZE	FIRE SYSTEM		ELECTRICAL	SWITCHES	WEIGHT
			TYPE	SIZE	MODEL #	QUANTITY	
1	WALL MNT	12"x54"x24"	ANSUL R-102	3.0/3.0/3.0	DCV-2111	1 LIGHT 1 FAN	305.00 LBS

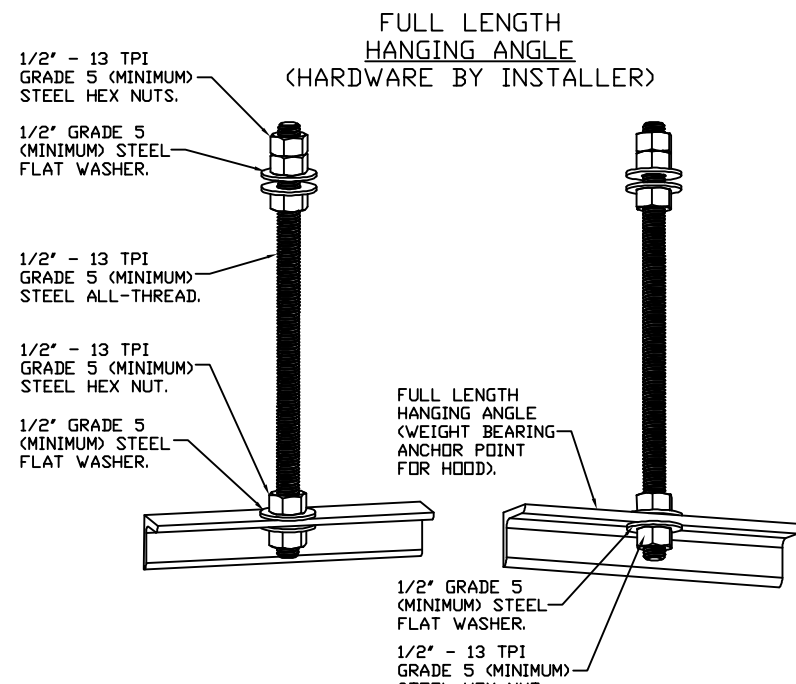
FIRE SYSTEM INFORMATION - JOB#5986683						
FIRE SYSTEM NO	TAG	TYPE	SIZE	FLOW POINTS	INSTALLATION	
					SYSTEM	LOCATION ON HOOD
1		ANSUL R102	3.0/3.0/3.0	29	WALL UTILITY CABINET LEFT	N/A

GAS VALVE(S)				
FIRE SYSTEM NO	TAG	TYPE	SIZE	SUPPLIED BY
1		MECHANICAL	2.000	CAPTIVEAIRE SYSTEMS

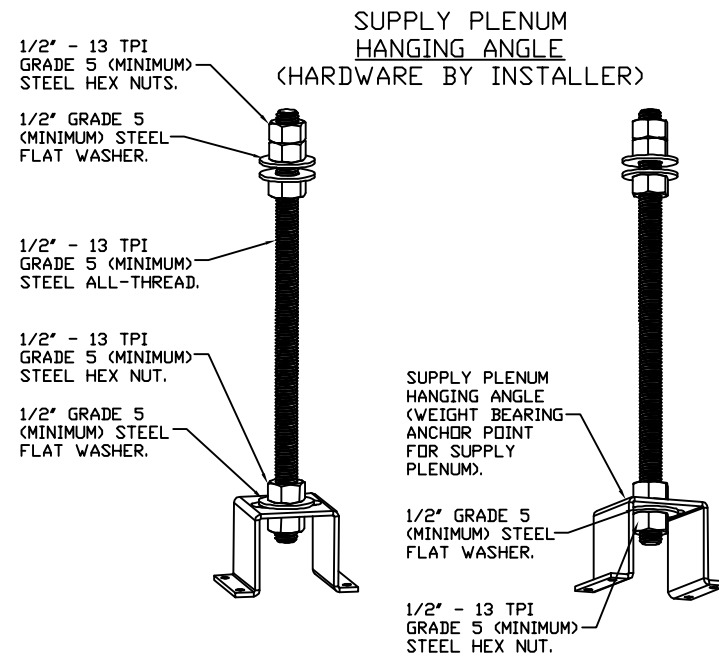
3002 DOW AVENUE, SUITE 410
TUSTIN, CA 92780
TEL: 714-677-2963 EMAIL: REG83@CAPTIVEAIRE.COM



HANGING ANGLE MUST BE SUPPORTED WITH 1/2" - 13 TPI GRADE 5 (MINIMUM) ALL-THREAD. SANDWICH HANGING ANGLES AND CEILING ANCHOR POINTS WITH 1/2" GRADE 5 (MINIMUM) STEEL FLAT WASHERS AND 1/2" - 13 TPI GRADE 5 (MINIMUM) HEX NUTS AS SHOWN. MUST USE DOUBLED HEX NUT CONFIGURATION BENEATH HOOD HANGING ANGLES AND ABOVE CEILING ANCHORS. MAINTAIN 1/4" OF EXPOSED THREADS BENEATH BOTTOM HEX NUT. TORQUE ALL HEX NUTS TO 57 FT-LBS.





HANGING ANCHOR MUST BE SUPPORTED WITH 1/2" - 13 TPI GRADE 5 (MINIMUM) ALL-THREAD. SANDWICH HANGING ANGLES AND CEILING ANCHOR POINTS WITH 1/2" GRADE 5 (MINIMUM) STEEL FLAT WASHERS AND 1/2" - 13 TPI GRADE 5 (MINIMUM) HEX NUTS AS SHOWN. MUST USE DOUBLED HEX NUT CONFIGURATION ABOVE CEILING ANCHORS. SINGLE HEX NUT BENEATH HANGING ANGLE IS ACCEPTABLE FOR FULL LENGTH HANGING ANGLES. MAINTAIN 1/4" OF EXPOSED THREADS BENEATH BOTTOM HEX NUT. TORQUE ALL HEX NUTS TO 57 FT-LBS.




HANGING ANGLE MUST BE SUPPORTED WITH 1/2" - 13 TPI GRADE 5 (MINIMUM) ALL-THREAD, SANDWICH HANGING ANGLES AND CEILING ANCHOR POINTS WITH 1/2" GRADE 5 (MINIMUM) STEEL FLAT WASHERS AND 1/2" - 13 TPI GRADE 5 (MINIMUM) HEX NUTS AS SHOWN. MUST USE DOUBLED HEX NUT CONFIGURATION ABOVE CEILING ANCHORS. SINGLE HEX NUT BENEATH HANGING ANGLE IS ACCEPTABLE FOR PSP HANGING ANGLES. MAINTAIN 1/4" OF EXPOSED THREADS BENEATH BOTTOM HEX NUT. TORQUE ALL HEX NUTS TO 57 FT-LBS.

REVISIONS		
DESCRIPTION		DATE:
Δ		
Δ		
Δ		
Δ		
Δ		







CAPTIVE

www.captiveaire.com

Southern CA National Accounts

3002 Dow Ave., Suite 410, Tustin, CA. 92780 PHONE: (714) 677-2963 EMAIL: reg83@captiveaire.com

Panda Express – Concord NC (#24956)

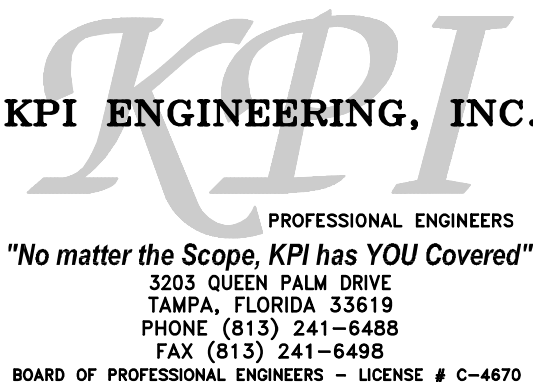
450 Kannapolis Parkway,

Concord, NC, 28027

DATE: 5/4/2023
DWG.#: 5986683
DRAWN BY: AH-83
SCALE: 3/4" = 1'-0"
MASTER DRAWING

SHEET NO.

1

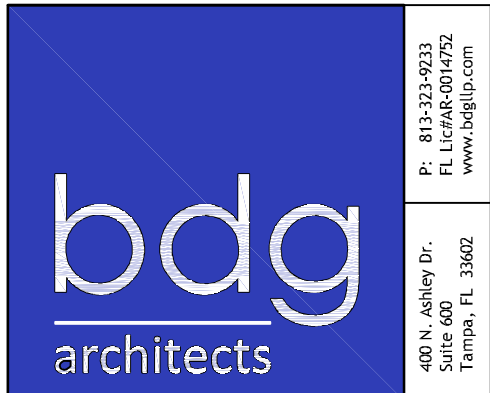


All ideas, designs, arrangement and plans indicated or represented by this drawing are the property of Panda Express Inc. and were created for use on this specific project. None of these ideas, designs, arrangements or plans may be used by or disclosed to any person, firm, or corporation without the written permission of Panda Express Inc.

REVISIONS:		

ISSUE DATE:		
CHECK SET		04-20-23
BID/PERMIT SET		06-01-23

ARCH PROJECT #: 239201



SCOTT ROBERT NELSON, P.E.
NC LIC. # 049030

PANDA HOME 2600
150 Kannapolis Parkway
Concord, NC 28027

PANDA HOME 2600 R3