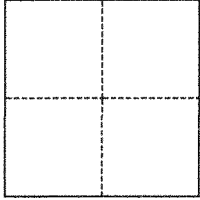


CORNER RECORD

Agency Index BK 144 PG 85Document Number CR 15079City of OAKLAND County of ALAMEDA, CaliforniaBrief Legal Description CITY SURVEY MONUMENTS AT COLBY ST, NORTH ST & 63RD ST**CORNER TYPE**

- ☐ Government Corner ☒ Control
☐ Meander ☐ Property
☐ Rancho ☐ Other

Date of Survey January 21, 2021**COORDINATES (Optional)**

N. _____ E. _____

Elevation _____

Units ☐ Metric ☒ U.S. Survey Foot

Horizontal Datum _____

Zone _____ Epoch Date _____

Vertical Datum _____

☐ Complies with Public Resources Code §§8801-8819☐ Complies with Public Resources Code §§8890-8902

PLS Act Ref.:

☐ 8765(d)☒ 8771☐ 8773☐ Other:Corner/
Monument:☒ Left as found☐ Established☐ Rebuilt☒ Pre-Construction☐ Found and tagged☐ Reestablished☒ Referenced☐ Post-Construction

Narrative of corner identified and monument as found, set, reset, replaced, or removed:

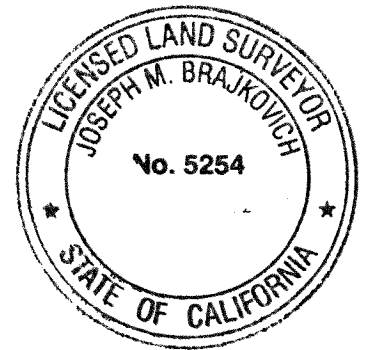
☒ See sheet #2 for description(s):**SURVEYOR'S STATEMENT**

This Corner Record was prepared by me or under my direction in conformance with

the Professional Land Surveyors' Act on

Signed

P.L.S. or R.C.E. No.

2-15-21
5254**COUNTY SURVEYOR'S STATEMENT**

This Corner Record was received

and examined and filed

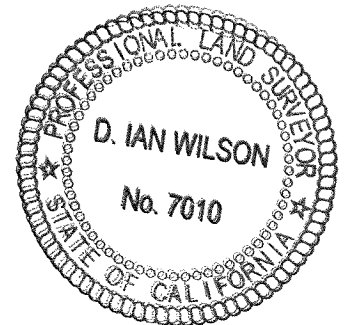
JAN 12 2022

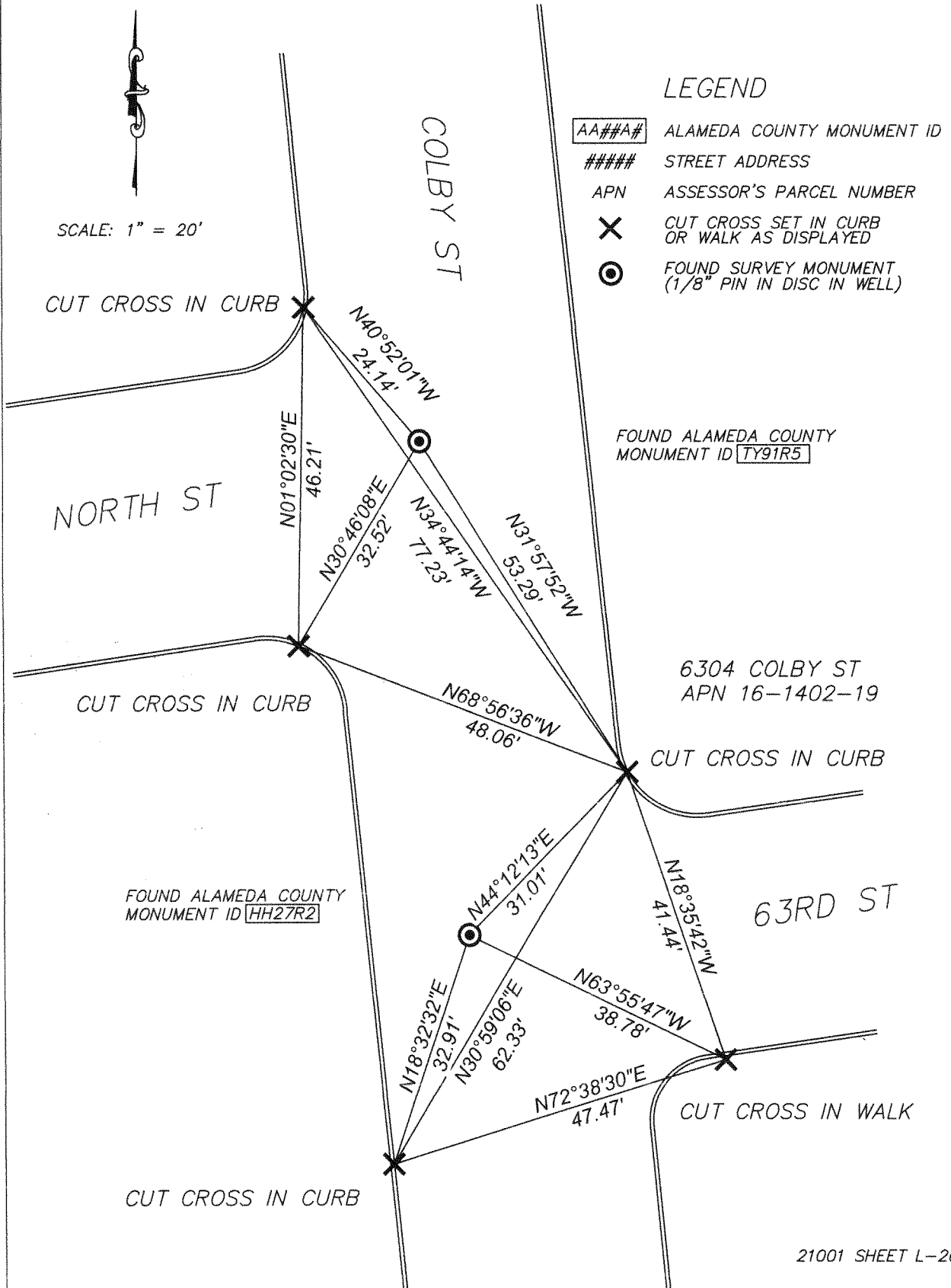
Signed

P.L.S. or R.C.E. No.

7010Title ALAMEDA COUNTY SURVEYOR

County Surveyor's Comment





21001 SHEET L-26