

SHEET 6 OF 6 SHEETS
SCALE: 1" = 30'

FINAL MAP TRACT NO. 37-39

COUNTY OF MONO, CALIFORNIA.

MAY 1980

GERALD F. OLDENBURG, L.S. 3246

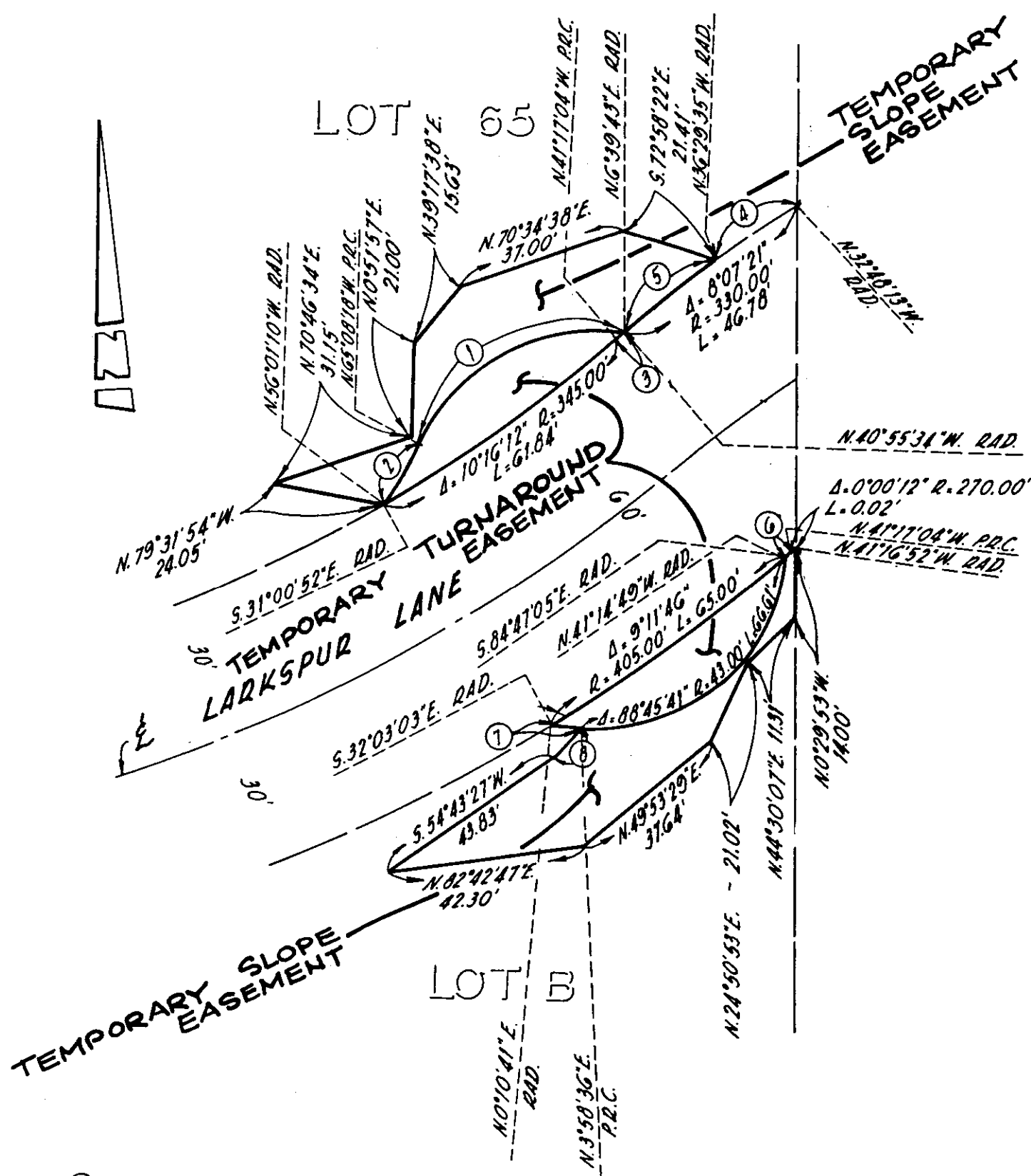
WILLIAMSON AND SCHMID, CIVIL ENGINEERS

70 LOTS AND LOTS A, B AND C

58.505 ACRES GROSS
8.689 ACRES / STREET AREA

NOTE:

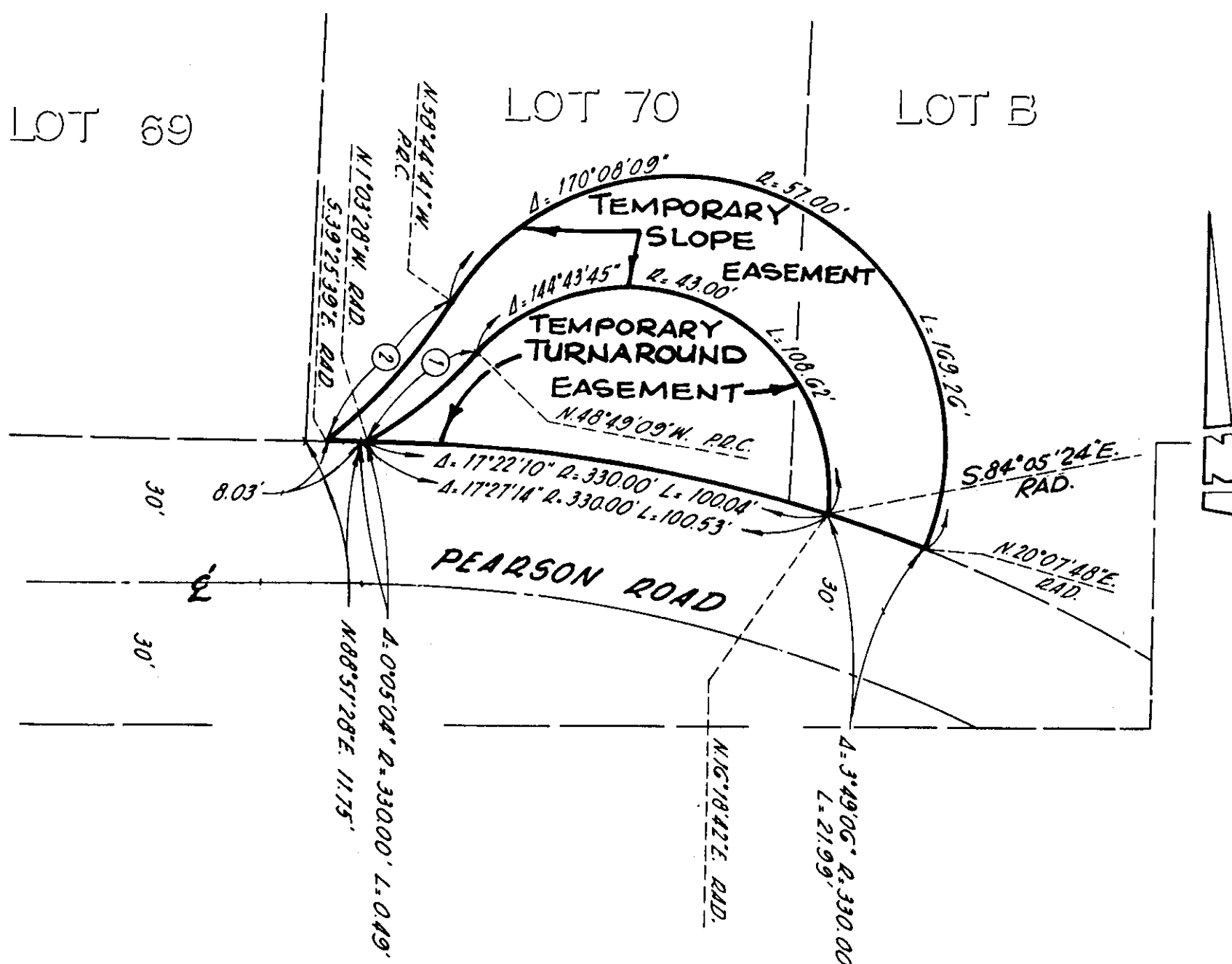
SEE SHEET 2 FOR BASIS OF
BEARINGS, MONUMENT NOTES
AND SHEET INDEX MAP.



- | | | | |
|---|-----------------|-----------|----------|
| ① | Δ 71° 48' 01" | R 43.00' | L 53.89' |
| ② | Δ 9° 07' 08" | R 95.00' | L 15.12' |
| ③ | Δ 0° 21' 30" | R 330.00' | L 2.06' |
| ④ | Δ 3° 41' 22" | R 330.00' | L 21.25' |
| ⑤ | Δ 4° 25' 59" | R 330.00' | L 25.53' |
| ⑥ | Δ 0° 02' 15" | R 405.00' | L 0.27' |
| ⑦ | Δ 3° 47' 55" | R 95.00' | L 6.30' |
| ⑧ | Δ 41° 40' 51" W | 8.41' | |

DETAIL A

- | | | | |
|---|---------------|-----------|----------|
| ① | Δ 18° 34' 11" | R 95.00' | L 30.79' |
| ② | Δ 19° 19' 02" | R 120.00' | L 40.46' |



DETAIL B