

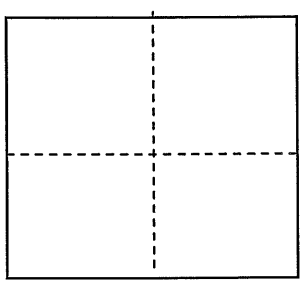
CORNER RECORD

Document Number CR3531

City of Berkeley

County of Alameda, California

Brief Legal Description Monument B1809



CORNER TYPE

COORDINATES (Optional)

Government Corner ☐ Control ☐  
Meander ☐ Property ☐  
Rancho ☐ Other ☒  
Date of Survey 11/14/08

N. \_\_\_\_\_  
E. \_\_\_\_\_  
Zone \_\_\_\_\_ NAD27 ☐ NAD83 ☐  
NAD83 Epoch \_\_\_\_\_  
Elev. \_\_\_\_\_  
Vert. Datum: NGVD29 ☐ NAVD88 ☐  
Meas. Units: Metric ☐ Imperial ☐

Corner - Left as found ☐ Found and tagged ☐ Established ☐ Reestablished ☐ Rebuilt ☐

Identification and type of corner found: Evidence used to identify or procedure used to establish or reestablish the corner:

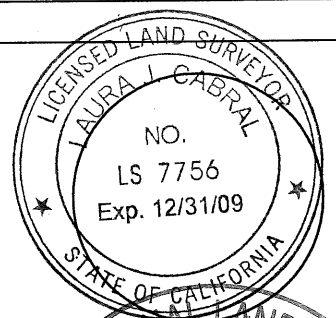
See Sketch on attached drawing

A description of the physical condition of the monument as found and as set or reset:

See Sketch on attached drawing

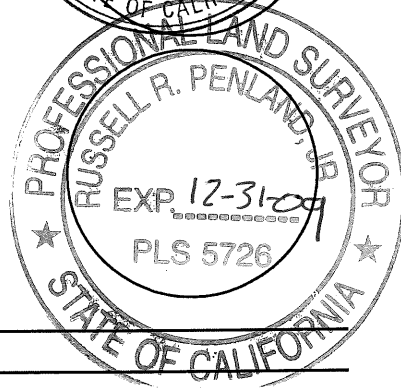
SURVEYOR'S STATEMENT

This Corner Record was prepared by me or under my direction in conformance with  
The Land Surveyor's Act on DECEMBER 10, 2008  
Signed Laura J. Cabral P.L.S or R.C.E. No. 7756

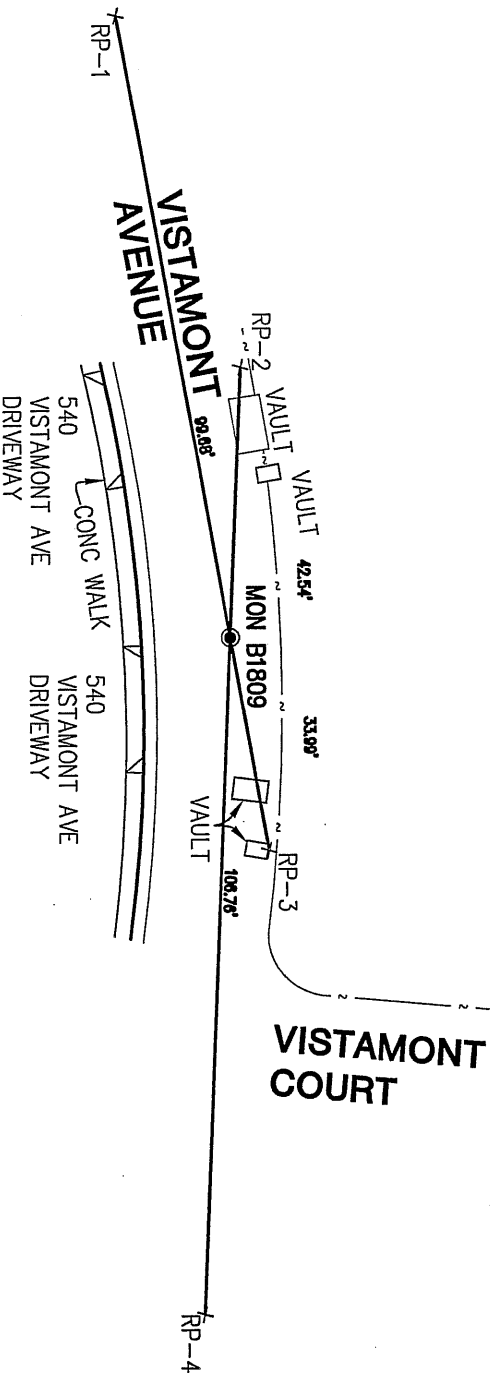


COUNTY SURVEYOR'S STATEMENT

This Corner Record was received 11-14-2008  
And examined and filed 01-02-2009  
Signed Russell R. Penland P.L.S or R.C.E. No. 5726  
Title County Surveyor



County Surveyor's Comment \_\_\_\_\_




REFERENCE  
TRACT 3019 (59-M-26)

THE EXISTING MONUMENT AS SHOWN IS REFERENCED BY THE INTERSECTION OF STRAIGHT LINES BETWEEN RP-1 TO RP-3 AND RP-2 TO RP-4.

● FOUND 2 1/2" BRASS DISC WITH PUNCH LABELED "LS 2769" IN STANDARD CITY MONUMENT WELL

X REFERENCE POINT MAG NAIL & WASHER IN AC

 <b>SANDIS</b> CIVIL ENGINEERS SURVEYING PLANNERS		605 Castro Street   Mountain View, CA 94041   P. 650.969.6900   F. 650.969.4772   www.sandisllc.com <b>MOUNTAIN VIEW</b> <b>ROSEVILLE</b> <b>OAKLAND</b>	
DATE: 11/14/08	SCALE AS SHOWN	SHEET	
DRAWN BY: PGD	APPROVED BY: LJC	2	
DRAWING NO.: 208128	<b>MON B1809</b> <b>VISTAMONT AVE</b> <b>CORNER RECORDS</b> <b>CALIFORNIA</b>		
<b>BERKELEY</b>		OF 2 SHEETS 208128	