

Mode Auto Off			Re #1 (CSM) Off			Re #2 (CSAK) Off			Close All		
Symbol	Spr	Pips	W1	D1	H4	H1	M15	M5	Close Profit	Close Loss	
AUDCAD	10.0	30	-	-	-	-	-	-	BUY	SELL	CLOSE
AUDCHF	9.0	28	-	-	-	-	-	-	BUY	SELL	CLOSE
AUDJPY	10.5	71	-	Re#1	-	-	-	-	BUY	SELL	CLOSE
AUDNZD	9.0	9	-	-	-	-	-	-	BUY	SELL	CLOSE
AUDUSD	7.0	19	-	-	-	-	-	-	BUY	SELL	CLOSE
CADCHF	9.5	8	-	-	-	-	-	-	BUY	SELL	CLOSE
CADJPY	10.0	46	-	Re#1	-	-	-	-	BUY	SELL	CLOSE
CHFJPY	14.8	44	-	-	-	-	-	-	BUY	SELL	CLOSE
EURAUD	8.3	45	-	-	-	-	-	-	BUY	SELL	CLOSE
EURCAD	9.8	8	-	-	-	-	-	-	BUY	SELL	CLOSE
EURCHF	8.3	19	-	Re#1	-	-	-	-	BUY	SELL	CLOSE
EURGBP	5.5	9	-	-	-	-	-	-	BUY	SELL	CLOSE
EURJPY	9.2	73	-	Re#1	-	-	-	-	BUY	SELL	CLOSE
EURNZD	10.1	38	-	-	-	-	Re#2	-	BUY	SELL	CLOSE
EURUSD	2.7	2	-	Re#2	-	-	-	-	BUY	SELL	CLOSE
GBPAUD	6.4	79	-	-	-	-	-	-	BUY	SELL	CLOSE
GBPCAD	6.5	13	-	-	-	-	-	-	BUY	SELL	CLOSE
GBPCHF	9.5	7	-	Re#1	-	-	-	-	BUY	SELL	CLOSE
GBPJPY	12.1	67	-	Re#2	-	-	-	-	BUY	SELL	CLOSE
GBPUSD	4.8	13	-	-	-	-	-	-	BUY	SELL	CLOSE
NZDUSD	5.2	12	-	-	-	-	-	-	BUY	SELL	CLOSE
USDCAD	4.8	6	-	-	-	-	-	-	BUY	SELL	CLOSE
USDCHF	4.7	16	-	Re#1	-	-	-	-	BUY	SELL	CLOSE
USDJPY	9.9	68	-	Re#1	-	-	-	-	BUY	SELL	CLOSE
XAUUSD	4.6	43	-	-	-	Re#2	-	-	BUY	SELL	CLOSE
BTCUSD	389.2	1694	-	-	-	-	-	-	BUY	SELL	CLOSE
US100	42.0	699	-	-	-	-	-	-	BUY	SELL	CLOSE
US30	69.0	215	-	-	-	-	-	-	BUY	SELL	CLOSE
~ Semi Auto Mode ~											

Risk Warning

Commodity Futures Trading Commission Futures, Currency and Options trading has large potential rewards, but also large potential risk. You must be aware of the risks and be willing to accept them in order to invest in the futures and options markets. Don't trade with money you can't afford to lose. This is neither a solicitation nor an offer to Buy/Sell futures or options. No representation is being made that any account will or is likely to achieve profits or losses similar to those discussed on The SharpShooter EA's media.

The past performance of any trading system or methodology is not necessarily indicative of future results.

The automatically generated lot size is an estimated value and should not be considered accurate, note that this feature always requires a stoploss distance and use lotsize wisely

Note:

This software is provided by charge and build based on BBMA Oma Ally Strategy, In-depth knowledge of BBMA Oma Ally strategy is needed

BBMA OMA ANALYZER DASHBOARD

DESCRIPTION

BBMA Oma Ally Analyzer Dashboard EA has been modified with a more concise, simple appearance and reduce CPU usage. In previous versions, EA was built rigidly and only a few multi-timeframe structures could be selected.

In this latest version, allows users to choose freely simultaneously.

Basically the BBMA Oma ally strategy is trend following strategy, in which the signal generated must always be in a state of reentry (after CSAK or CSM).

However, the reentry signal must be validated with several conditions

1. Rejection EMA50
2. GAP (EMA50 above Upper BB or below Lower BB)
3. Extreme
4. Direction (First CSAK/CSM) after MHV
5. MHV
6. Full Setup (Extreme valid > TPW > MHV > CSAK/CSM > Reentry) at the lowest timeframe.

Note :

Reentry is scanned only in ZZL (Zone Zero Loss) conditions

Reentry Type # 1 : in the higher TF there must be a CSM

Reentry Type # 2 : No need for CSM, just CSAK

TRADING MODE

1. Semi-Auto
EA will provide a notification/alert when a pattern/structure is formed, and traders may execute/OP manually by clicking the buy/sell/close buttons that are already on the dashboard without having to open a new chart.
2. Full Auto
EA will execute automatically.
 - SL at latest high/low tolerance distance.
 - TP according to Risk Ratio (eg RR 1:2. SL 20pips & TP 40pips).

MONEY MANAGEMENT

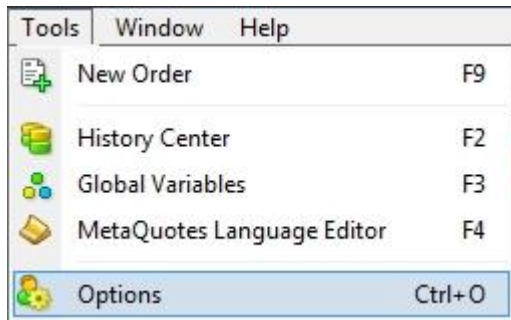
1. Fixed lot, the lot will remain unchanged
2. Each transaction/opened position uses the SL at the nearest swing high/low according to the last Extreme & MHV position
3. Trailing Stop (true/false) after running profit EA and CSA (break MA5/10 high/low) is detected in the same direction, SL will be moved to the low of the bullish candle (if the position is buy) and the high of the bearish candle (if the position is sell).

INSTALLATION

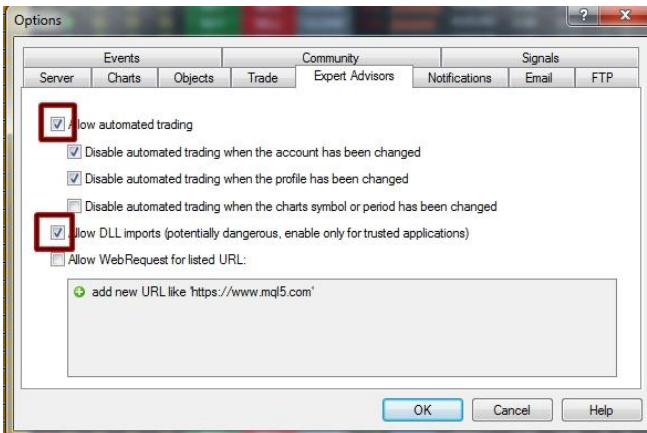
1. Copy folder MQL4 & Templates
2. Open metatrader
3. Click file > Open data folder
4. Paste
5. Right click on navigator & click "refresh" or restart mt4

SETTING

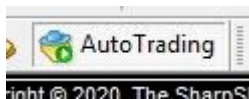
1. Open Market watch or ctrl + m, right-click "show all"
2. Click "Tools" > "Options" (Ctrl+O)



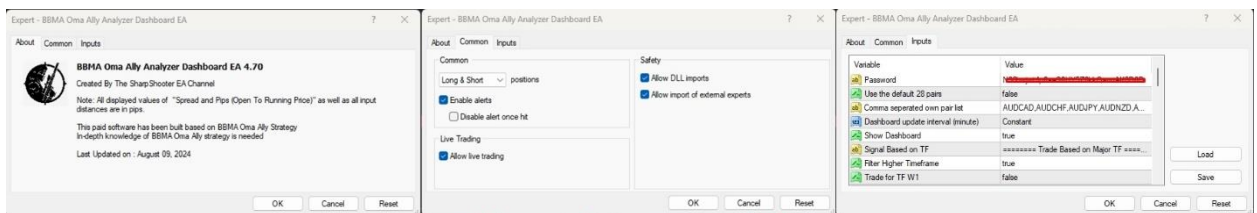
3. On tab "Expert Advisor" check as the picture below



4. Make sure "Auto Trading" button is activated



5. Make sure to go back to market watch, right click and click show all
6. Open any random graph / whatever and any time period
7. Attach EA



8. Input your own password
9. Wait a few minutes to load all parameters until all features (spread & pips are read all), because EA reads all data in all pairs and timeframes.
10. Click the "Auto Off Mode", "Reentry #1 Off" and "Reentry #2 Off" buttons until they change to "Auto On Mode", "Reentry #1 on" and "Reentry #2 On" and all of them turn green.



PARAMETER

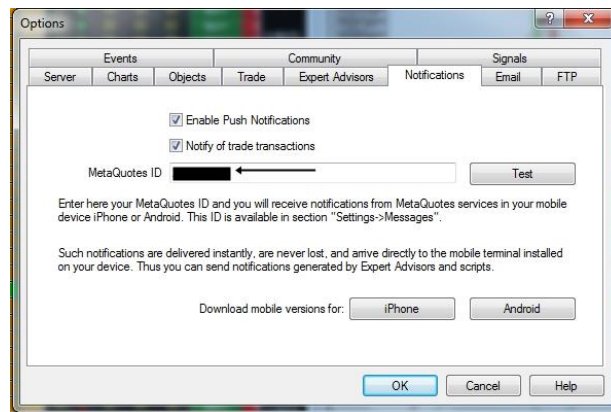
1. Passwords
Please enter the password that was sent to your email for activation
2. Use the default 28 pairs
If "true" = Currency pairs that will be scanned by default match those available on the market watch
3. Comma separated own pair list
If Use the default 28 pairs set "false" = please enter and select the currency pairs symbol as you wish by using commas between pairs.
Example: AUDCAD, AUDCHF, AUDJPY, AUDNZD, AUDUSD, CADCHF, XAUUSD
4. Show/Hide Dashboard
5. Trade Management
 - Filter Higher Time Frame
 - Trade for TF W1, D1, H4, H1 (Major Timeframe)
 - Show PopUp Alert Final Signal
 - Lotsize > Number of lots to be used
 - Max trades per signal
 - Max total trades overall, Maximum overall open positions
 - Risk Ratio, the distance between TP compared to SL
 - Treat Profit Position if Breaks MA
 - i. Close if Break MA
 - ii. Trailing After Break MA
 - Only Add Profit positions > EA will add positions when the last transaction in these pairs is in a profit only
 - Start Hour & End Hour.
 - Max Spreads > Maximum tolerance spread limit when making a transaction
6. Risk Management
 - Trade on Friday (if true, EA will not trade on Friday)
 - Max daily target (all positions will be closed if reached)
 - Maximum daily loss (all positions will be closed if reached)
 - Close all orders at market close (on Friday evening)
7. Trailing by percentage
 - Start trailing (if profit reaches a certain value, trailing will be active)
 - Profit to lock (all positions will be closed when trailing is active and profit reaches the locked value)
8. Reentry Alerts & Notifications (W1 until M5)
9. Notifications to mt4 mobile
Allows to send notifications to mt4 mobile.
10. Notif signal to telegram channel
It is possible to send every signal and pattern notification to the Telegram channel
11. Telegram tokens
A unique code generated by the telegram bot as an identity for sending notifications to telegram
12. Comment For Auto Execution
Order Comment as an identity when the order is made by EA automatically and this comment is also the identity of the name when the notification is sent to telegram
13. Comment For Manual Execution
Order Comment as identity When the order is done manually by using the buttons on the dashboard

ACTIVATE NOTIFICATIONS TO MT4 MOBILE

1. Open mt4 mobile (android/ios)
2. On the settings menu, scroll down
3. Under the message menu, find and write the Metaquotes ID



4. Open mt4 on pc/laptop
5. Click Tool > Options (Ctrl+O)



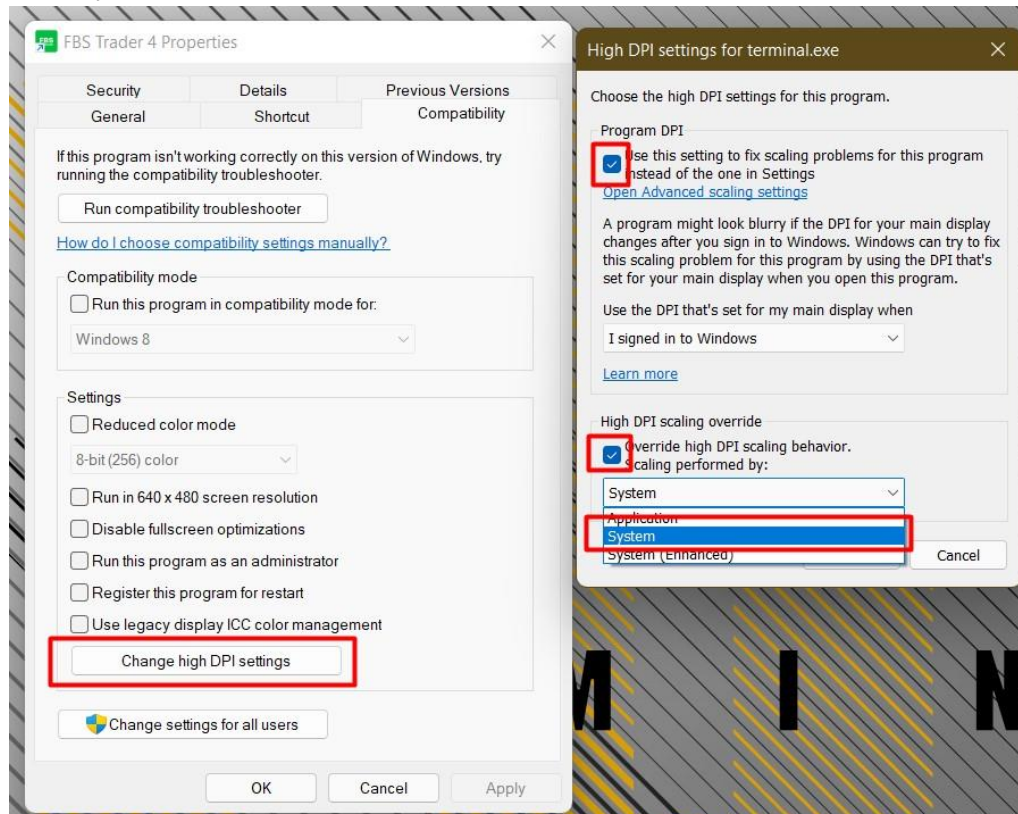
6. Click "Notification" tab
 - a. Checklist "Enable Push Notifications"
Allows EA / Indicator to send notification to mt4 mobile
 - b. Checklist "Notify of trade transactions"
Allows mt4 to provide notification of every transaction activity that occurs on mt pc / laptop.
7. Fill in the Metaquotes ID column that you found on mt4 mobile
8. Click "Test" to test whether messages and notifications get to mt4 mobile
9. Make sure on EA settings parameter on "Notification to mt4 mobile" must be "true"

DISPLAY RESOLUTION:

Most of modern laptops and monitors have much higher resolution, however, many notebooks still use 1366x768px screens - in fact, it's the most popular display resolution in use nowadays.

If you don't see the panel dashboard entirely or distorted, please have a look how to do with it:

1. Right click your mt4 icon on your desktop & click properties
2. Click on compatibility tab
3. Follow these steps.
4. Restart your mt4



NOTE :

In this version you no longer need to open several charts, just open one chart with any time frame.

Activate the signal button above until the writing changes to green & "On"

If you want to activate full auto mode, click the top left button until it changes to "Auto On Mode" and is green.

~ WISH YOU LUCK ~

Reentry Type # 1



Reentry Type # 2

