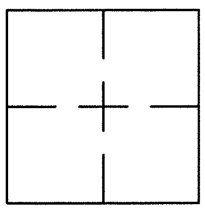


CORNER RECORD

Document Number CR 8792

City of EDEN TOWNSHIP County of ALAMEDA, California

Brief Legal Description BRASS DISC MONUMENT LOCATED WITHIN THE INTERSECTION OF GLENWOOD DRIVE AND CRESTWOOD DRIVE.



CORNER RECORD

Government Corner ☐ Control ☒
 Meander ☐ Property ☐
 Rancho ☐ Other ☐
 Date of Survey 8/18/16

COORDINATES
(Optional)

N. 2085440
 E. 6119399
 Zone _____ Datum _____
 Elev. _____

Corner — Left as found ☒ Found and tagged ☐ Established ☐ Reestablished ☐ Rebuilt ☐

Identification and type of corner found: Evidence used to identify or procedure used to establish of reestablish the corner:
FOUND BRASS DISC WITH PUNCH IN MONUMENT WELL.

THIS POINT WAS REFERENCED PRIOR TO A CONSTRUCTION PROJECT IN THE VICINITY.

A description of the physical condition of the monument as found and as set or reset:
FOUND AND SET POINTS AS SHOWN ON PAGE 2.

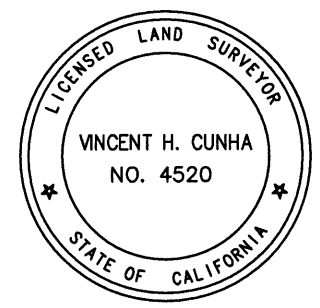
THE TIES SHOWN HEREON ARE FOR THE PURPOSE OF PERPETUATING FOUND MONUMENTATION.

NO CLAIM IS MADE AS TO THE RELATIONSHIP OF THE POINTS OR LINES SHOWN HEREON TO TRUE BOUNDARY LOCATIONS.

SURVEYOR'S STATEMENT

This Corner Record was prepared by me or under my direction in conformance with the Land Surveyors' Act on AUGUST 22, 2016.

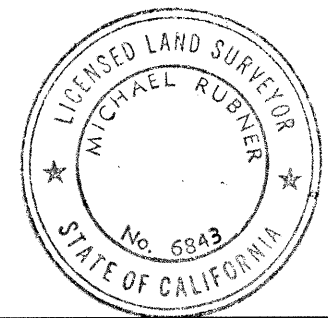
Signed Vincent H. Cunha L.S. Number LS 4520



COUNTY SURVEYOR'S STATEMENT

This Corner Record was received 24 AUGUST 2016 and examined and filed 15 SEPTEMBER 2016.

Signed Michael Rubner Title COUNTY SURVEYOR



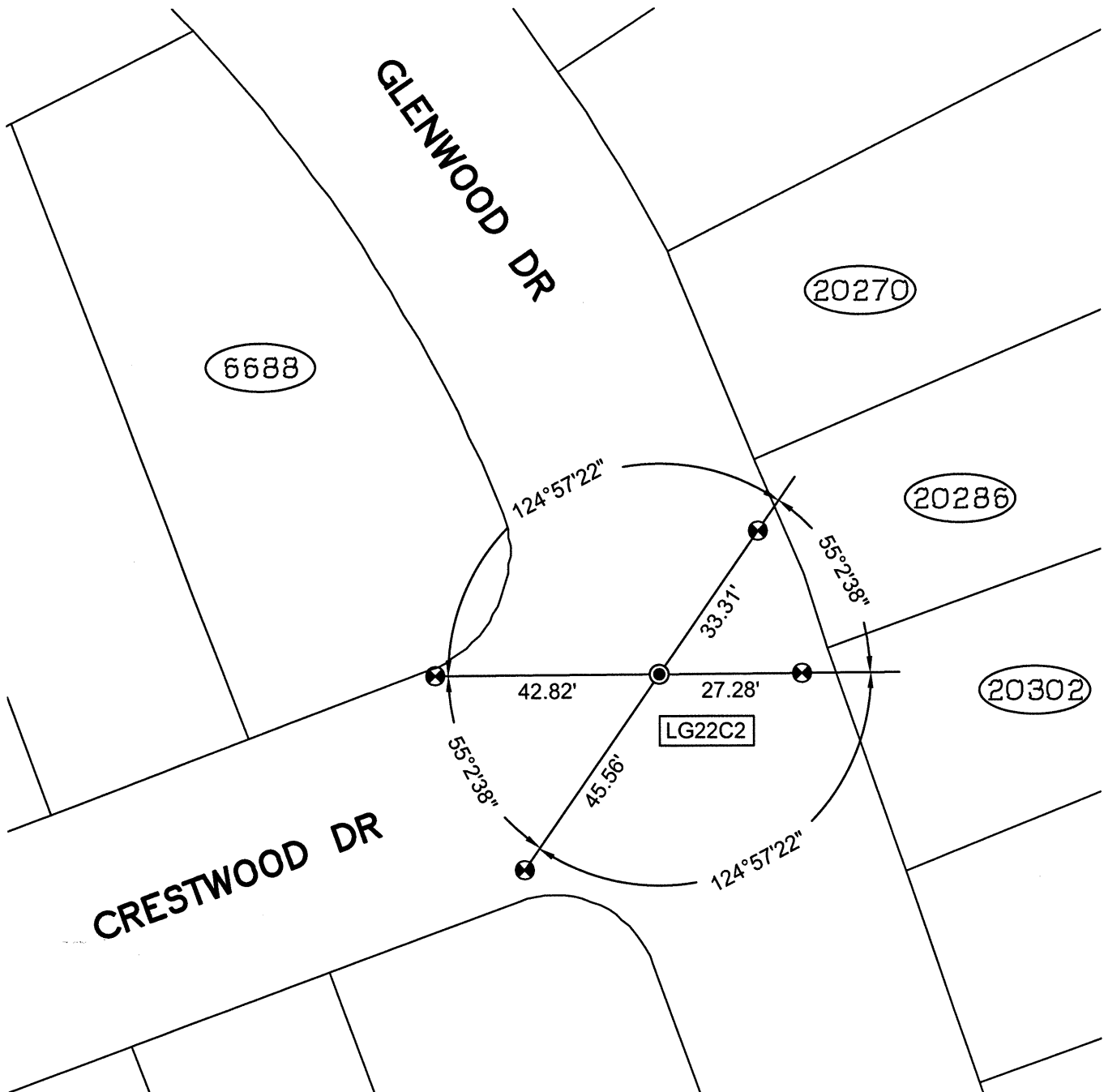
County Surveyor's Comment _____

SPEC 2304-PRE

SCALE: 1"=30'

LEGEND

- FOUND BRASS DISC WITH PUNCH IN MONUMENT WELL
- ⊗ SET CUT CROSS IN WALK
- ✕ SET CUT CROSS IN CURB
- SET REBAR & CAP STAMPED "CEI RP"
- AA### ALAMEDA COUNTY MONUMENT ID
- 19592 REFERENCE STREET ADDRESS



216140-CR18